

The Spider's Web

Delivered free to over 5,200 homes in Avondale and Waterview



April 2014

AVONDALE No. 131

EASTER COMPETITION

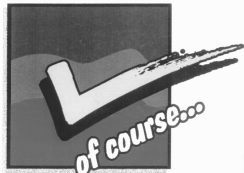
Find the Bunny Posters and Win Win Win1 Entry Per Child

The Avondale Business Association is running a Easter Competition promotion for the children of Avondale. Find Bunny Posters, around Mainstreet selected shop windows, to receive a Spider Stamp and win a Easter Bunny. Hurry now and find the Bunny Posters scattered around Mainstreet Shops. Ask the shop keeper for a Spider stamp and continue on until you receive all 5 spider stamps to qualify to win an Easter Bunny prize. Competition starts on Monday 7 April and closes on Tuesday 29 April 2014. Ages between 2 and 10 years old. Completed Entry forms can be handed in at the Avondale Appliance Centre, 1a Crayford Street-West, Avondale. *PLEASE 'NO' PHOTO COPIES, USE THIS Spider Web Entry only!!*

Easter Bunny Competition	
Find the Bunny Posters and Win Win Win ...	
Name:	
Address:	
DOB:/AGE	
Spider Stamp ▼	
Shop Name.	
Shop Name.	
Shop Name.	
Shop Name.	
Shop Name.	



Avondale



Published by the Avondale Business Association

Phone (09) 820 0648

Fax (09) 820 0649 PO Box 19 730 Avondale

Email: aba@avondale.net.nz

Website: www.avondale.net.nz

Advertise here for as little as \$25 per month.

"Please note: Payment is required once final proof is accepted before printing."

DISCLAIMER: Every effort has been made to ensure the accuracy of information in this newsletter, but the editors and publishers accept no responsibility for any errors or omissions.



Duncan Macdonald
JP
Chairman
Avondale Business
Association and
Avondale Community
Society Inc.

the Chairman's Chat

When the Whau Local Board won't even pass a motion to explore funding opportunities for a swimming pool in Avondale, it looks as if the pool is disappearing along with the Park and Ride.

The latest Council report said, that even if there was to be a pool, it should be sited in New-Lynn Town Centre along with the promised Avondale Recreation Centre and Youth Centre.

That leaves Avondale with a un-staffed half closed Community Centre and a Library that doesn't want to work with the Avondale Action Plan.

A separate rate to fund swimming pools of about \$24 per household per year is in line with Otahuhu \$15 and Mangere \$30, evidently, Mangere having 2 pools.

This fund could have enabled the Avondale Primary School to construct a Learning pool, available to the public, similar to that at New Windsor School. The fund may have been used to refurbish other pools and may have saved the Avondale College pool. The fund would have shown Council that we really want a pool and are willing to help fund it

In my opinion the Whau Local Board have ignored the pleas of the Avondale Residents and my plea that 'kids who can't swim "Drown".'

See advert for public meeting

STOP SMOKING TOBACCO, IT'S ONLY KILLING YOU..

If you've tried all the batches and the pills, and you are still puffing the disgusting weeds, come and see me and will get you sorted with an Electronic Cigarette (E-SMOKE). They are only a fraction of the price of tobacco and have no carbon monoxide or dioxide or any of the additives that are put in tobacco leaves. And yes, we do have cartridges with a minuet amount of synthetic nicotine to help with the withdrawal symptoms.

Duncan Macdonald,
Avondale Appliance Centre, 1a Crayford Street-West,
Avondale. Ph. (09) 828 2098.

Deadline for May issue of Spider's Web, Thursday 24 April 2014 at 12 noon. Enquiries phone 09 820 0648.

PUBLIC MEETING

Tell us your ideas for Avondale town centre

Are you interested in Avondale's future direction?

Whau Local Board invites you to attend a community workshop to:

- look at what is important for Avondale town centre
- find out about Council's current thinking
- hear what the community has been telling us
- contribute to the development Avondale's future

All are welcome. Please come and share your ideas!

Where: Avondale Primary School Hall,
Crayford Street West, Avondale

When: Thursday 10 April, 7pm- 9pm

Find out more:

email antonina.georgetti@aucklandcouncil.govt.nz
or call 09 826 5191.

Go to www.facebook.com/whauLB for more information.



Funerals with a Tradition of Caring

Battersby is a family owned funeral service with three generations of history behind it over 80 years. Battersby is a well established and trusted name in funeral services. What Mark and Jennifer provide is more than just formality, it is part of the process of healing and celebrating life.

- * Available when you need us.
- * Able to assist with memorial stones, plaques
- * Chapel reception lounge and viewing hours.
- * One account to cover all funeral expenses.
- * Pre arranged and pre paid funerals.

Details: 1855 Great North Road, Avondale: Ph: 09-828-5113
Email: battersbyfuneralservices@xtra.co.nz
Website: www.battersbyfuneralservices.co.nz

Shop in Avondale Mainstreet...
where it's Market Day everyday...

Whau Local Board Meetings

At the Whau Local Board meeting on 19 March 2014, deputations were received from four organisations.

Deputations

Three representatives from the Western Area Citizens Advice Bureaux described the organisational set up of the Western Area bureaux. "New Lynn is the flagship branch" of NZ bureaux, and is the busiest, but is severely pressed for accommodation. Avondale, one of the oldest branches in Greater Auckland is "one of the least envied branches in Auckland," and "almost starved to death." After the loss of their offices at the Avondale Community Centre, temporary accommodation was arranged beside the library carpark, but this is only until June this year.

Board Chair Catherine Farmer advised that there was a report coming to the Board in April, concerning continued operation of the Avondale CAB beyond the end of June.

Jackie Whittaker, Area Commander of Avondale Police, described some of the current projects in the community. The focus in the Auckland area is on property crime. Avondale's issues are to do with the homeless on the streets. Board Member Ami Chand commended the Police for doing a wonderful job. Board Member Ruby Manukia-Schaumkel raised an issue of road racing in the Rosebank-Patiki area. Board Member Duncan Macdonald suggested that ICON security be contacted when such incidents occur, as they liaise with local police.

The Peace Foundation referred to the Auckland City for Peace Declaration launched 8 and 9 June 2012. The Foundation have worked in the past year on the Auckland Peace City Toolkit. Their toolkit was launched at Puketapapa (Mt Roskill) in 2013. They will commemorate on 8 and 9 June this year the anniversary of the NZ nuclear-free zone declared in 1987, and suggested a showing of a 40 minute DVD documentary on the history of the movement. They requested that the Board endorse the Auckland Declaration for Peace and that officers identify peace activities in the Board area. The Board agreed.

Auckland Regional Migrant Services Trust was established in 2002 to support newcomers and migrants. They provide settlement support/face-to-face advice, workshops, and work with service providers re interpreters, cultural awareness etc. They offer an English advisory service including consultation, courses and assessment. Community-based projects are supported – multi-cultural playgroups, WISE collective (social and economic improvement), driving license support. New legislation takes away community based settlement support, and is a concern to ARMS, so the Trust are setting up a decentralised newcomer support programme, based in libraries and other locations that offer a welcoming environment. They seek funding support from local boards for setting up costs, and see to set up a satellite office in New Lynn. The Board noted the request for endorsement and support and that this would be considered through the Annual Plan process.

Public Forum

In Public Forum, Judy Revell attended, from Avondale Athletics Club, based at Eastdale Reserve. They provide athletics opportunities for young teenagers in the area. Club numbers have declined in favour of Waitakere Stadium, so the club is asking Council to consider development of Eastdale Reserve. They have approached all four neighbouring school principals and have received support for their ideas. Two-level storage & clubroom is suggested, with purpose built track away from Rosebank School grounds. In the 1990s, records were set amongst junior athletics from the club.

Swimming Pools targeted rate

Board Member Macdonald moved, seconded by Board Member Derek Battersby, that the Board request Council officers to write a report considering the concept of a Whau Local Board wide targeted

rate for the maintenance of existing swimming facilities in the Whau area and to support the design and building of new swimming pools in the area. Board Member Macdonald said that the local community are demanding provision of a swimming pool, and that there was a need to show Queen Street the Whau area are willing to put money up for the project. Board Member Derek Battersby acknowledged the comments by Board Member Macdonald. The issue has been raised since the beginning of the Super City. Policy is still being worked through. He felt the Board could easily support concept of a swimming pool in the area. Pools are a regional concern, but the Board could express their support. He requested further information on targeted rates set in other areas. **At the vote, the Ayes numbered 2 (Members Duncan Macdonald, Derek Battersby), the Noes 4 (Board Chair Catherine Farmer, Members Ruby Manukia-Schaumkel, Ami Chand and Susan Zhu), and the motion was lost.**

Not present: Simon Matafai.

Community leases

The following community leases were approved by the Board, on the basis of a 10 year period, at \$1 rent plus GST if requested: the Tag Out Trust, 6 Olympic Place, New Lynn, and the Western Suburbs Radio Club, 3000 Great North Road, New Lynn.

Chairman's report

The Board Chair Catherine Farmer tabled her report, concerning three areas.

Local board funding policy

"The Auckland Council Act 2009 provides an opportunity for local boards to fund activities from targeted rates. Some local board activity is non-discretionary and asset based, such as maintaining and operating our libraries and community halls. Some activity is discretionary, e.g. environmental grants and arts activities. The funding formula being considered by the Governing body is calculated by population, deprivation, and land factors. Some wards like Orakei are advantaged by this funding formula, other wards like Waitakere, are disadvantaged. Whau is placed in the middle of the win-lose spectrum. We will be asked to give our feedback on the local board funding scenarios in the next couple of months. In the meantime, any decision we make to levy a targeted rate on Whau residents for any particular activity will be an additional cost to a charge for service for waste collection."

Local Government Amendment Act (Amendment No. 3)

"Central government will amend the Local Government Act to lessen development contributions paid by property developers. Council levies development contributions at the time of building from developers to help pay for infrastructure to support development e.g. roading and community assets. Libraries and community centres are examples of community assets which will no longer be funded as a consequence of the reduced development contributions. Community assets provision will be transferred as a cost to the general ratepayer resulting in a forecast 8.5% rates rise over the next 10 years. A letter was sent to the Select Committee."

Avondale Development Plan

"Last year an investigation was undertaken to look at intensification of the Avondale Town Centre and look at where community facilities may be located. In September 2013 the Avondale Advance newsletter stated: "This latest strategic work incorporates and explores a variety of concepts and ideas the council will consider and develop in consultation with the community." and "Potential development opportunities were explored following an enquiry by design workshop and the final details will be worked out in conjunction with the community." Before we sign off the Avondale plan there needs to be public consultation."

The Board supported implementation of engagement plan including Avondale Development Plan presentation and opportunities for feedback within the next month.

Avondale Community Action Group

Interviews happening in Rosebank Area and Ash Street

Avondale Community Action has a Random Household Survey underway and is looking for people to get involved. You can meet the organizers at the Avondale Library every Friday 9.30 - 11.30am to find out what is involved and sign up to volunteer or contact us at avondalecommunityaction@gmail.com.

It's a great opportunity to be involved with your community. Training and references will be provided. You can follow us on facebook: [avondale community action](https://www.facebook.com/avondalecommunityaction) or look online at www.avondalecommunityaction.com.

Always wondering what houses on YOUR street are selling for?

Visit www.violetplusgloria.com/street to get a free report on your street in Avondale or Waterview

CONTACT
M: 021 043 9833
B: 09 815 9184
E: gloria.ellis@bayleys.co.nz



VIOLET + GLORIA + BAYLEYS



Milestones

TROPHIES & ENGRAVING

Specialists in

Trophies Engraving Shields Laser Work
Badges Personalised Gifts Sublimation

1784 Great North Road Avondale
P: 5500230 M: 0226711656

Advertise here for as little as \$25 per month.
Contact Bernie now on: aba@avondale.net.nz

This story of Charles Darwin by Prof Hamilton is worth reading. Copy and paste this link into your internet access:

<http://www.e-educate.org/darwin.html>

+++++

It appears that the Captain set the plane on auto-pilot towards the deepest ocean, cut off all oxygen supply and leave it at that – It's painful to accept this theory especially when one of our loved ones was buried with him in the deep Indian Ocean? Take a look at: <http://www.novels4kids.com/mh-370.html>

AVONDALE DENTAL

Ph: 09 828 5786 Fax: 09 828 6586

1962a Great North Road, Avondale
Email: avdental@extra.co.nz
Website: avondaledental.co.nz

Hours 8am – 5pm {Monday - Friday}

Dr Tim Little (B.D.S. Otago)



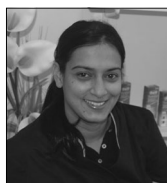
Tim has been highly involved in the Auckland Dental Association. He was president for 2 years before handing this position over and, still involves himself by continuing to support the new President and the executive. With Tim's experience he was also called on to help as a Chairman on the peer review committee. Tim is also a foundation member of the New Zealand Academy of Cosmetic Dentistry. He also has a keen interest to continue with further education on implant surgery. Tim's outside interests include spending time with his family and their three teenage children. He is a keen skier and in the summer months windsurfs, cycles and supports his kids with their sailing.

Dr Victor Young (B.D.S. Otago)



Victor graduated from the University of Otago in 1985 and has been a partner at Avondale Dental since 1990. He is an Auckland Dental Association Welfare Officer, helping his colleagues in times of need. Victor is also a Dental Mentor, helping other dentists with issues in the business and clinical aspects of dentistry. He is a Foundation Member of the New Zealand Academy of Cosmetic Dentistry. He enjoys delivering high quality dentistry with a caring, personal approach to all his patients. Victor loves to relax with a good game of tennis and is a keen skier and golfer. He is married to Liz and they have two teenage children.

Priya Associate Dentist Dr Priya Singh Reid (B.D.S. Otago)



After graduating from Otago University in 1997, Priya started her dental career in Hamilton before moving to Auckland in 2000. She has been in private practice in Auckland since. Priya is a member of the Auckland Dental Association and the Auckland Academy of Cosmetic Dentistry. She is passionate about providing high quality, long term, reliable and friendly care for her patients. Outside of work Priya loves spending time with her family. She also enjoys staying active and is a keen cook.

Hygienist Jelena Knezevic (BHSc Oral Health)



Jelena is a dual qualified Dental Hygienist and Therapist. She worked for 5 years as a registered nurse prior to moving to New Zealand in 2001. She has always enjoyed working in an environment where she can help people. She decided to explore a new avenue and qualified at AUT with a Bachelor Degree in Oral Health. Her ambition is to help people in achieving optimal oral health. Outside of work she loves to relax with a good book, and when the need arises to get a bit more active likes to get involved with a bit of DIY.

Avondale Dental is located in Mid-West Auckland and only 10minutes from the CBD. Our objective is to provide high quality dentistry with a personal and caring service. We provide a full range of dental care using the latest technology and dental materials. Our equipment and sterilization procedures are state of the art.

Our motto is that we are, "The Creators of Great Smiles and Healthy Mouths for Life"

Our services:

- * Latest Technology Using Latest Laser, Cad Cam Technology And Abrasion
- * Crowns And Veneers
- * Cosmetic Dentistry Restoration Of Broken Teeth And Mouths
- * Bridges
- * I V Sedation For Nervous Patients And Nitrous Oxide
- * Implants - Crowns
- * Preventative Dentistry
- * Laser Whitening
- * Jaw Problems
- * Oral Surgery
- * Partial And Full Dentures
- * Dental Hygiene
- * Take Home Bleaching

Contact us now for an appointment or further information.

Avondale Library Happenings

Auckland Council
Te Kaunihera o Tāmaki Makaurau



Children's School Holidays 19 April – 3 May | Horrible Histories and Heroes.

Take your pick!

We have fun-packed Horrible Viking and Fire-blasting Volcanic activity sheets to do.

"Our Heroes Storytime" – stories about our everyday heroes. Come meet them!
Wednesday 23 April, 10:30am - 11am

"Horrible and Gross": come touch and feel a Viking meal! Can you describe what you touch without seeing it?

Suitable for 5-10 year olds.

Monday 28 April from 2:30pm till 3:30pm

"It's a Viking raid to pillage our library! Come and join the Viking nerf gun fight and there's a scavenger hunt too! Suitable for ages 5+.

Tuesday 29 April from 2:30pm till 3:30pm

We will have a "Super" Preschool Storytime.
Wednesday 30 April from 10:30am - 11am

"Come and watch the Viking Volcano go va-voom, ka-boom!"
Help us build a volcano and make it erupt! Suitable for 5+.
Thursday 1 May from 10:30 - 12 noon

We are holding the "Victorious Viking Games!" – participate in Piggy in the Middle, Tong-Hunk, Tug of War and others. Suitable for 5+.

Fri 2 May from 10:30am - 11:30am

Join us for a "Vivaciously Vicious Viking Storytime!" Come along to our Viking themed storytime – where the villains are venomous and vile!

Saturday 26 April and Saturday 3 May from 11am - 11:30am

Other things to check out:

"Self check competition! Be in the draw to win our Hamper of Easter treats!"



AVONDALE COMMUNITY GARDENERS



Biodynamic Food Quality



Eating is an agri-cultural act. Rudolf Steiner's Agri-cultural Course in 1924 stated that the issue of nutrition, & thus also of agriculture, would determine the future of humanity, including our own spiritual nature. Biodynamic Agriculture extends

beyond the biological & medical realm, to restore the important 'bio-dynamics' or life-energy in our food - which is just as important as the physical substance. The complex sugars, proteins & oils that define good flavour & high nutrient density are enhanced by the use of Biodynamic Preparations. Lis Alington, our guest presenter on 12 April, has reviewed International research, both quantitative & qualitative, that show beneficial effects of the Biodynamic Preparations on soil & humus quality, & animal health & fertility. Lis' upcoming workshop on "Plants, the Human body, & Biodynamic food quality" will provide well substantiated research facts as a further back-up to personal experiences about the inherent benefits of Biodynamic farming & gardening. Please register with lmi, ph: 828-5854 for our 2014 Series;
W : www.facebook.com/avondalecommunitygardeners
E : avondalecommunitygardener@gmail.com

Saturday 12 April at RPC Hall (Rosebank/Orchard St)
LIS ALINGTON : "Plants, the Human body, & Biodynamic food quality"

11am – 2pm, \$5 entry, b.y.o. lunch / share

19 April – 3 May.

Enter by printing off a due date slip at the self check unit. Enter as many times as you like!

To speed up your visits to the library, we have 2 self – check machines. It's easy as!

You can renew your books and check the information on your books too!

This allows staff to do more Readers Advisory work, help with customer queries and run Library programmes.

Akozone afterschool homework programme, Wriggle and Rhyme, will be taking a break over the school holidays.

The Library will be closed on these days:

Easter Holidays Friday 18 April and Monday 21 April

ANZAC Day Friday 25 April

May is New Zealand Music Month – look out for some wonderful free music events at the Library!

See you at the Library!

Avondale Library
93 Rosebank Road, Avondale 1026
Ph: 374 1310
www.aucklandlibraries.govt.nz
Twitter: Auckland_Libs

Advertise here for as little as \$25 per business card size advert.
Email: aba@avondale.net.nz now.

Avondale Community Centre, 99 Rosebank Road, Avondale

What's coming up at the Community Centre?

► YOUTHTOWN – FREE HOLIDAY PROGRAMME

For AGES 11 – 17, various dates from APRIL 22 – MAY 2,
ACTIVITIES INCLUDE: Watersports, Team Challenges, Art workshops, Sports & Games, Cooking and Awesome Daytrips
Enrolment forms available at the centre or go to www.youthtown.org.nz, for more information and to register.

► ZUMBA WITH ANNIE – TUESDAY 10am - 11am

A combination of your favourite Zumba moves to some great beat.

\$5 per session (children free). Phone certified Zumba & Zumba Gold

instructor Annie 0274 284 894 or just come around.

► DANCE EXERCISE WITH BEV LEIGH MON 9.45am-10.45am

Improve your fitness. Learn basic dance steps to the music of the 70's

& 80's. \$5 per class. For more information contact: Bev 624 3399

► DIABETIC SUPPORT GROUP – on the 1st Monday of the months

Next meetings: 07/04 and 05/05. For more info phone 827 8315

► CITIZENS ADVICE BUREAU AVONDALE has moved to the Avondale Library carpark. Office hours: MON – FRI 9.30am to 1pm

Deadline for the April 2014, issue of Spider's Web is 12 noon on Thursday 27 March 2014. All enquiries contact Bernie on 09 820 0648 or 021 0613080.

Find us
and
like us



on



Facebook

www.waterviewlaundromat.co.nz

**Waterview
Laundromat**

35 Davenport St, Waterview

Do your
laundry and
surf the
internet



We have
WiFi

- **Bigger Machines** • great for washing bedding and other large items
- **Cheaper Prices** • self service \$1 & \$2 coin operated



Open 7 days, 6am - 10pm

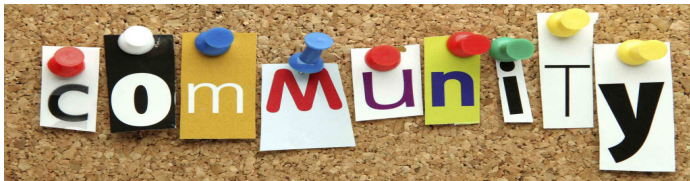
Coin change available at Waterview Superette:

1481 Great North Rd, Waterview, ph: 09 828 0482

email: waterviewsuperette@xtra.co.nz



Issue 23 - April 2014



There's been some really neat community events in March, and it's been really good to be a part of them and talk to locals about how things are going, any issues they know of, and life in general.

April has some significant events that locals can attend and be involved in. One is ANZAC Day on Friday the 25th April. This is an opportunity to say "Thanks" to those whose family members went to war in 1914, many of whom never returned, and to acknowledge those who served our community and country in the services, and those who continue the fine traditions of proudly serving and representing New Zealand abroad in both conflict and humanitarian situations. **LEST WE FORGET.**



The patrol has been going for a couple of months now, and are adding value to the crime prevention and visibility in the community. There are spaces on the roster, so get active and become part of this worthwhile group.

You can contact us on the office phone (8205701) and leave your details, so one of us can get back to you and start the process to get you on the patrol.



In these early stages, people are using their own vehicles (and get petrol vouchers) but all the other necessary gear is provided (phone, hi-vis gear, torches, signage) and various tasks as they come up to be the eyes and ears for the community and advise police of actual or potential issues in the neighbourhoods.



If anybody has a spare hour on a Tuesday morning (from 11-12), and enjoys books, we'd love to hear from you and invite you to help us to help a group of Avondale Intermediate students improve their literacy and reading ability. This is a really rewarding experience, seeing positive changes in kids' lives, so ring 8205701 to get involved.



THE SPIRIT
LIVES
2014 - 2018



If you are part of the Facebook social media network, why not go and have a look at our NPT Facebook page, and 'like' it so you can find out what's going on in the two neighbourhoods.

And for those who have already joined our page, 'share' it with your friends, especially if they are from the local area.

And thanks for the positive comments and support - 350 people (and rising) can't be wrong! We hope you like the balance we are trying to achieve between events, issues, and prevention advice to keep our neighbourhoods safe. We welcome your comments, messages, and feedback.

IMPORTANT CONTACTS

Emergencies - 111

Non-emergencies - (09) 571 2800

Crimestoppers - 0800 555 111

Rosebank/Waterview Neighbourhood Policing Team: (09) 820 5701 or 0275 822 363 (NOT staffed 24/7)

Email: Rosebank.Waterview.NPT@police.govt.nz

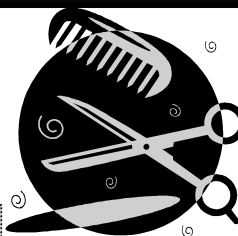
Neighbourhood Safety Panels:

rosebanknsp@gmail.com

waterviewnsp@gmail.com

SMART CUTS

Ph. (09) 828 8544
66 Rosebank Road
Avondale



NO APPOINTMENT NECESSARY

Opens:

Monday to Wednesday: 9am to 5.30pm
Thursday: 9am to 6pm
Friday: 9am to 7pm & Saturday: 8am to 2pm
Sunday: Closed

10-Years Experience ♦ Designer Cuts

Monday Special: \$10 Hair Cuts except for
* Razor Fade * Skin Fade & Flat Tops

FAMILY DISCOUNTS {5 PEOPLE OR MORE LAST ONE FREE}

Passport Cards Available for a Visit Stamp!
SMART CUTS to make you look smarter.
Come and see the **TEAM** now for a Smart Cut:

Director/ Manager:

George Lilomaiava
&
Ken Leauanae
Edward Falaniko



Just for a Laugh!

Psychiatrists vs Bartender

EVER SINCE I WAS A CHILD, I'VE ALWAYS HAD A FEAR OF SOMEONE UNDER MY BED AT NIGHT. SO I WENT TO A SHRINK AND TOLD HIM:

I've got problems. Every time I go to bed I think there's somebody under it. I'm scared. I think I'm going crazy.

Just put yourself in my hands for one year, said the shrink. Come talk to me three times a week and we should be able to get rid of those fears.

How much do you charge?

Eighty dollars per visit, replied the doctor.

I'll sleep on it, I said.

VANISHING TRICK

What do I say, when I'm told this happens everyday.
BPW612 you were very much part of me.

Now as you whiz pass down Highway 22.
Hopeful I might catch you,
or hope that counting sheep, in your sleep,
is too much for you.

By Corale Magnus, 0223 145051

HIPPY
NEW ZEALAND

Home Interaction Programme for Parent and Youngsters

ONLY \$1 PER WEEK!

Help prepare your child for school

HIPPY
Educating children
Empowering families
Engaging Communities

HIPPY IS AN EDUCATIONAL PROGRAMME FOR PRE-SCHOOL CHILDREN, PREPARING THEM FOR A SUCCESSFUL START TO SCHOOL.

CALL OR COME IN & ENROL YOUR CHILD TODAY FOR 2014!

Based in Rosebank School
Avondale

HIPPY Coordinator: Elisa Niovara
217 Rosebank Road, Avondale
PH: 828-6319 MB: 022 3507748
Email: hippy@rosebank.school.nz

Criteria applies

Six months later the doctor met me on the street. Why didn't you come to see me about those fears you were having? He asked.

Well, Eighty bucks a visit, three times a week for a year, is \$12,480.00.

A bartender cured me for \$10.00. I was so happy to have saved all that money that I went and bought me a new pickup truck.

Is that so? With a bit of an attitude he said, and how, may I ask, did a bartender cure you?
He told me to cut the legs off the bed. Ain't nobody under there now.

To owners of Avondale Mainstreet buildings and Shop Keepers:

A friendly reminder please, you need to keep the front of your Shops tidy and clean. Numerous complaints have been received that the state of some of these buildings are unsightly. Formal letters will be issued to worst looking buildings to repaint, water blast or clean the fronts of their shops. If not the Avondale Business Association will organize to repaint, waterblast or clean the fronts of the shops and you will be send the Invoice. If you require paint, please contact Bernie (0210613080) as she have some White Paint, Dark Green and Yellow paint available. Please make our Town Centre Clean and Tidy and pleasant for people to see and visit.

Kind Regards, **Bernie Thomsen**, Administrator/Co-ordinator, Avondale Business Association

Avondale - Waterview Historical Society

When Avondale Racecourse went to the Dogs

It's interesting how unusual enquiries can lead to new information on an area's history. One day in 2005, I received an email from Shirley Rolfe, a member of a South Auckland whippet club, asking about an "Avondale Cup" a member of her club had been given by a relative. The top of the cup has the figure of man with two dogs, both dogs caught at the moment of full stretch at a run. Near the bottom of the cup is a plate reading: "Avondale Cup 1894, won by J. Appleby's Rambler". Shirley wondered if the cup was to do with racing whippets.

I was aware at the time of a well-known photograph in the Auckland Central Library's collection showing racing dogs and their owners outside the Avondale Hotel during Mr. Stych's time (so, mid-to-late 1890s), but Shirley advised that the photo wasn't of whippets, but their larger cousins the greyhounds. And that's where it ended – a photo of an intriguing cup, a name, and some mystery.

Late last year, while I was looking for something else entirely in newspapers from the 1890s, I found this from 1897:

"Auckland Coursing Club. Nominations for the May Meeting Close at the Club's Office, Vulcan Lane, To-Night (Friday) at 9 o'clock. Harry H. Hayr, Secretary."

The name Harry Hayr made me sit up and take notice. He was the first secretary of the Avondale Jockey Club, an office he held for 23 years. Suddenly, there was a likely connection between dog racing and our racecourse. I dug further, and found that the Auckland Coursing Club had started sometime during the 1880s, their first meetings

held in places like Papatoetoe – farming, rural districts. Coursing itself is an ancient sport, dating back to Egyptian times, and from the 19th century took on new popularity in English-speaking countries. It involved having dogs chase hares in races, but the hares mainly survived. The start of the Auckland season was in May of each year, and it was in May 1894 that I found the earliest report I have so far as to the Avondale dog races, held at the racecourse (an 1897 article confirmed the site):

"The first events of the coursing season were opened at the Avondale Plumpton Park on Saturday afternoon, and although the morning was cloudy and threatening, the weather held up fine during the afternoon ... The dogs seemed to be well trained, and gave interesting sport, and the hares were for the most part strong and fast, the result being that in the majority of instances they made good their escape, while in the cases of any hares which were manifestly weak or young, the dogs were not slipped at them, and they were allowed to get away."

Amongst the list of dogs who ran that day in May 1894 was one Rambler, owned by J. Appleby. A little later that year, he must have won the Avondale Cup with "Rambler" – the next year he raced "Evening Star", and the year after that "Starlight".

So, now we know we once we had a "Plumpton Park" on the racecourse, just off Wingate Street, where the hares ran and the dogs chased. All because a cup won 111 years before emerged from out of obscurity, and sparked a hunt of its own.

As for the cup -- as far as I'm aware, it was donated to the Greyhound Association, as part of that organisation's history.

Lisa J Truttman (AWHS, Ph. 828-8494 for information)

DINNERTIME!

Are you hungry or lonely or just like eating with others?

Well, Avondale Baptist Church invites you to join us for a delicious dinner at The Intersection Lounge - cnr

Blockhouse Bay &
New North Rds,

Avondale on the first Sunday of each month.

Bookings are essential so phone the Church Office on 828 0182 on the Thursday beforehand. All welcome.

Please keep our Town Centre clean and tidy.

Do not encourage begging on Mainstreet by giving the beggars money, you are contributing to their loitering and drunken behaviors.
Help make our Town Centre a SAFE PLACE to be!!

Community Education at its Best CALLING COMMUNITY TUTORS

IF you have something to teach or a school subject like Maths to tutor

or IF are interested to be a community tutor in one of many FREE courses given by Universities of international repute under the www.coursera.org banner, please contact:

Francis Lai, MBA PhD FRICS at cons7984@gmail.com for an initial meeting of minds. You can also contact Francis Lai by text at 021 309 708.

Shop in Avondale Mainstreet,
where its Market Day everyday.....

Avondale RSA Club

ANZAC Day

Itinerary
Friday, 25th April 2014

7:30am Café Royale (Breakfast)

Returned Persons & Serving Personnel Free,
Members & Visitors \$10

9:30am Parade Fall In

Outside Clubrooms—7 Layard St, Avondale

9:40am Parade March Off

**10:00am Service at St Ninians
War Memorial**

**10.30am Parade Returns to the
Avondale RSA**

1:00pm Lunch

Returned Persons & Serving Personnel Free,
Members & Visitors \$10

Breakfast & Lunch Prepaid Package \$15

Breakfast & Lunch sponsored by the Avondale RSA

**Members of the public are invited to join us on our march
and attend the commemoration service.**

**Entertainment will be
Rangi & Judy 1—6pm and Second Innings 7—11pm
Clubrooms close at 11.30pm**

Neelam Superette & Lotto



For all your grocery convenience
and
purchasing that lucky Lotto Ticket
or Scratchy, the Manager, Michael
Vaidya and his friendly staff
are always ready with a smile to
assist you.

Come on down and see us.

Open up to 8.30pm

**Mon-Sun,
7-days a week**

**22 St Georges Rd,
Avondale**



Avondale Plumbing Services Ltd



Jaik Stone

NZ Certifying Craftsman Plumber

M: 021 916089 P: 09 828 4505

E: avondaleplumbingnz@gmail.com

Avondale College Community Facilities

The Avondale College Community Stadium is
available for hire:

Monday - Friday term time	6:00 pm - 10:00 pm
Weekends/School Holidays	All day
Bookings taken weekdays	10:00 am - 6:00 pm

Sports Facilities available are:

- Two full size Basketball courts (one has seating for up to 1,000 spectators) which can also cater for many other indoor sports e.g. Volleyball, Indoor Soccer
- Two Squash courts
- Tennis courts
- Softball diamond
- Artificial Hockey turf
- Artificial Cricket wicket
- Dance room

Avondale College Community Stadium is a
partnership with Auckland City Council.

Please phone or E-mail the Stadium Manager for
more information or a quote for your next event
or training.

Telephone (09) 828 9885

E-Mail facilities@avcol.school.nz



6,500 copies of
the Spider's Web
is printed each
month and
delivered around
Avondale &
Waterview.

Advertise your
business here
now for as little
as
\$25 + GST.

Beckett Real Estate

Licensed Agent REAA 2008

Sell your property with me...

Glenys Macdonald

Ph. 021 629066 or 09 8289812
1954 Great North Road, Avondale

Deadline for May Spider's Web is Thursday 24
April at 12 noon. Contact Bernie on
aba@avondale.net.nz

YOUR ONE STOP SHOP! Beckett Real Estate R.E.A.A

*Family owned business servicing the community for over
50 years!*

Landlords/Home Owners

We urgently require 2-3 bedroom accommodation in the
local area.

We offer:

- * Experienced Property Managers
- * Free rental appraisals
- * Free casual letting service

Ph: Rose 828 5518

021702777 Email: rentals@beckettrealstate.co.nz



Avondale Shoes

**We specialises in
"Shoes" and
shoe repairs.**

Visit us now! Open Mon to Sunday.

**1892 Great
North Road,
Avondale.
Ph 828-8904**

BUSINESS AFTER 5 - (AVONDALE MAINSTREET SHOPS & BUSINESSES only)

If you are interested in hosting a Business After 5, please contact Bernie Thomsen on (09) 820 0648 or
email: aba@avondale.net.nz. Great way to network with your other business colleagues.



Has another Sale On!! So come on down..
We are even feeling generous and offering trade in's
on some sale items

Line Trimmers

Bent Shaft

Normally ~~\$359.00~~ NOW: \$299.00



Straight Shaft

Normally ~~\$419.00~~ NOW: \$379.00



Combo System

Power Head Normally ~~\$649.00~~ NOW \$549.00

Attachments From ~~\$239.00~~

Attachments NOW FROM \$189.00



Chainsaws

14" Saw

Normally ~~\$699.00~~ NOW \$399.00



Blowers

Normally From ~~\$459.00~~

NOW From \$399.00



While stock lasts
 All Echo products comes with a massive
5 year domestic warranty

Phone: 828 9438 Address: 2 St. Georges Road, Avondale

like us on



www.facebook.com/avondalemowers

avondalemowers

AVONDALE APPLIANCE CENTRE

Home of Samsung & Omega

Washing Machines

* Refrigeration

* Dish Washers

* Wall Ovens and

* Rangehoods

WINZ Quotes available!

Ph. (09) 828 2098

1a Crayford Street-West, Avondale



AVONDALE RSA (Inc)

7 Layard Street, Avondale, (top of Rosebank Road)

Phone: 828-5000

Enjoy darts, Pool, Indoor Bowls,

18 Gaming machines, Library,

3 Big Screens, TAB

Facilities, Bus Trips, Sky TV.

Live Entertainment

Friday and Saturday nights.

There is always something happening at the Avondale RSA.

New Members Welcome.




Grabalogo.co.nz
simple, affordable, unsecured loans online

Avondale Mainstreet is a great place to be... take pride in your Town Centre and support us by **NOT** giving the beggars money as you are just feeding their alcohol/drug habits and not helping them one bit. Keep our Town Centre Clean & Tidy.

Support your Local Community, Get behind the Avondale RSA Car Boot Sale

Every Saturday, weather permitting - ongoing...

\$10 *per car
boot space*

Set-up from 8am
Car boot Sale officially starts from 9am to 12 noon

Book your space now Phone (09) 626 6279

at Car park, behind the Avondale RSA, 7 Layard Street, Avondale

Raffles on sale and some
FREE Giveaways...



DD MUSIC LTD

64 Rosebank Road
Avondale
Ph. (09) 828 7394

Musical Instruments & Accessories

Ukuleles - Great Range from **\$48.50**

Guitars - from **\$90** * 1/2, 3/4 and fullsize in store

Amplifiers from **\$50**

P.A. System 4 Chanel was **\$799** now **\$599**

www.ddmusic.co.nz

AVONDALE UNION PARISH

Seniors Time Out :

Time to enjoy yourself !!!

10am- 12 noon, every 2nd & 4th Thursdays.

- use computer suite, board games, chat over morning tea, crafts, meet new friends.

Where: Rosebank Peninsula Church Transport provided within 5 km radius.

contct: Alisa Lasi 0211181774 /

Auva'a Eneliko 828 8455 :

Gold coin donation

Candlelight Prayers: anonymous

Tuesday evenings: a quiet time to reflect / pray / meditate

6.30pm – 8pm Call in after work /shopping

Avondale Union Parish, 49 – 55 Rosebank Road.

Advertise here for as little as
\$25 per month.

Contact Bernie now on:
aba@avondale.net.nz



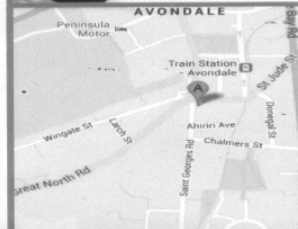
• *Specialising in colouring and cutting with a senior stylist who personally creates your style from beginning to end.*

• *As a Wella Professional Salon, I am a NZQA qualified hairdresser who is dedicated to the industry, training and keeping up with what's new and happening.*

• *My aim is to create a relaxed, friendly environment giving you an enjoyable experience.*

• *You will be treated as an individual when you arrive at Felice Hair Design and will leave as part of the family.*

I look forward to meeting you.



Call me now for your appointment

Phone: 828 6353

6 St Georges Road, Avondale

