

The Spider's Web

Delivered free to over 5,200 homes in Avondale and Waterview

April 2015



AVONDALE No. 142

EASTER COMPETITION

Find the Bunny Posters and Win Win Win1 Entry Per Child

The Avondale Business Association is running a Easter Competition promotion for the children of Avondale. Find Bunny Posters, around Mainstreet (selected shop windows), to receive a Spider Stamp and win a Easter Bunny. Hurry now and find the Bunny Posters scattered around Mainstreet Shops. Ask the shop keeper for a Spider stamp and continue on until you receive all 5 spider stamps to qualify to win an Easter Bunny prize. Competition starts on Thursday 9 April and closes on Tuesday 28 April 2015. Ages between 2 and 10 years old. Completed Entry forms can be handed in at the Avondale Appliance Centre, 1a Crayford Street-West, Avondale. *PLEASE 'NO' PHOTO COPIES, USE THIS Spider Web Entry only!!*

Easter Bunny Competition	
Find the Bunny Posters and Win Win Win ...	
Name:	
Address:	
DOB:/AGE	
Spider Stamp ▼	
Shop Name.	
Shop Name.	
Shop Name.	
Shop Name.	
Shop Name.	



Published by the Avondale Business Association (Bernie Thomsen)
Phone (09) 820 0648 Fax (09) 820 0649 PO Box 19 730 Avondale
Email: aba@avondale.net.nz Website: www.avondale.net.nz

Advertise here for as little as \$25 per month.

"Please note: Payment is required once final proof is accepted before printing."

DISCLAIMER: Every effort has been made to ensure the accuracy of information in this newsletter, but the editors and publishers accept no responsibility for any errors or omissions.

Whau Local Board Meetings

At the March meeting of the Whau Local Board, the following was among the items considered.

Deputation

Auckland Grey Power - Anne-Marie Coury

Would like support from the Board towards setting up an office, and made a presentation highlighting their projects for this year such as thriving communities, seniors wellbeing and connected communities.

Public Forum

Janet Charman – regarding public concerns regarding “Highbury Triangle” and development proposals in Avondale Shopping Centre. Asked the Board to help facilitate a public information meeting/committee regarding relocation proposals for the community centre and the library.

\$1,000 Fast Track Grants Given Out to:

- a) New Zealand Nepalese Society - Whau Local Board support to celebrate Nepali New Year 2015. Event will be delivered in April 2014, date and venue yet to be confirmed.
- b) Sisterhood New Zealand – Whau Local Board support for annual Family Day to be held in March 2015 at Kelston Girls High School or Brains Park (ytbc).
- c) Society for South East Asian Communities Inc – Whau Local Board support for a South East Asian food and cultural festival to be delivered at the New Lynn Community Centre on 18 April 2015.
- d) New Jaks Netball Club – Whau Local Board support for the annual prize giving event to be held on 29 August 2015

(Board Member Duncan Macdonald expressed concerns as to the inclusion of this motion regarding the fast tracked grants appearing as part of the Chairman's report. He was advised that this was only an interim measure until the community grants policy can be adjusted.)

Sister Rene Shadbolt Park, Turning of the Sod, 17February. There was a blessing by the kaumatua, and the Chair, turned the sod to mark the commencement of the construction stage of the new changing rooms project at the park. The Board members present joined council staff representatives, builders, club members, and local residents to share refreshments and to celebrate this happy occasion.

Holly Streetfootpaths

Auckland Transport has been asked to investigate why the Holly Street footpath has not been completed. Auckland Transport has looked into this request and the work that was carried out on Holly Street due to a water leak, for which Watercare did the repairs. Watercare will be completing this job in the next 10 working days. The Local Board should note that this footpath is not on the renewal programme and no maintenance work has been carried out there over the last 6 months.

Avondale Town Centre parking assessment

A request was received from the Local Board that they be part of the assessment process in regards to the Avondale Parking Plan. Auckland Transport is starting to review parking throughout the Avondale town centre and will be arranging occupancy surveys shortly. Auckland Transport have requested a workshop date to discuss with the Local Board the parking issues in this area and also to understand how parking can be incorporated into the planned redevelopment for Avondale.

St Georges Road, St Judes Street & Great North Road, Avondale Roundabout into traffic lights

A request was received from the Local Board Transport Lead to look at converting this roundabout into traffic lights. An Auckland Transport engineer has visited the site and undertaken an initial review of the issue raised. Further detailed investigation now needs to be undertaken to ensure a comprehensive review of this issue. This investigation has

been prioritised and programmed for review, with an expected completion date of mid March 2015. Following this AT will be able to provide the Board with the outcome and recommendations of the assessment.

Jomac Place, Honan Place, A & Lansford Crescent, Barhead Place Avondale

– Proposed prohibition of Lightweight motor vehicles between 10:00 pm to 4:00 am

Auckland Transport has received major complaints from the Police and members of the

Avondale community with regards to the ongoing anti-social behavior on Jomac Place and Honan Place in Avondale. These roads have been identified by the Police as locations with continuous Illegal Street Racing (ISR) activities. This was further confirmed during the site visits as a large amount of fresh tyre burn-out marks were evident on both roads. ISR incidents negatively impact on community confidence and have the potential to endanger those involved and the general public. Therefore in order to improve safety in the area, Auckland Transport propose to introduce a daily light-weight motor vehicle restriction on Jomac Place and Honan Place between the hours of 10:00pm and 4:00am. This would prohibit motor vehicles with gross vehicle weight of less than 3,500kg from entering these roads during this time period. The light-weight motor vehicle restriction will be enforced by the Police on offenders or spectators of Illegal Street Racing activities. Residents, businesses and their visitors who are going about their lawful business will not be affected by this enforcement action, assuming that they adhere to the Road Rules.



Joy Butterworth

started working in Avondale in 1978 at the Avondale Urgent Dispensary she worked there for 10 years she left there to begin working at Avondale Pharmacy from 1988 till March 2015 some 26.5 years.

Joy has really enjoyed working in the Avondale Community and is well known to all the locals, she will be missed in our community. Joy is moving out of Auckland to Ruakaka and area she very familiar with as she has spent numerous summer's there at the local camping ground, but has now decided to purchase a house in the area and retire. All the best Joy.

Avondale Primary School Gala

Avondale Primary School Gala attracted a large crowd who came to participate in and enjoy a wide variety of food, performances and activities. The occasion was a fundraiser to support learning programmes and thanks to a superb team effort by students, parents, staff and the community, was highly successful. Avondale businesses and other organisations were most generous in donating prizes and the Avondale Business Association provided great coverage and publicity – as well as having a 'hands on' approach with raffles and loaning equipment to help with the event. There was a general sense of appreciation for all of the support that the school received and families were well entertained. The jumble sale in the hall proved to be very popular with a wide range of second-hand goods on offer. School staff were directly involved in several food stalls and in other activities from a photo booth, through face painting to the making and selling of lolly leis. On the stage there were many great performances, including local kapa haka groups, bands and other entertainers. There are certainly a large number of talented people in the Avondale area and this provided an opportunity for them to showcase these talents. The colourful event captured the spirit of Avondale and was a wonderful community event that hopefully will become a regular occurrence.

Avondale College Community Facilities

The Avondale College Community Stadium is available for hire:

Monday - Friday term time	6:00 pm - 10:00 pm
Weekends/School Holidays	All day
Bookings taken weekdays	10:00 am - 6:00 pm

Sports Facilities available are:

- Two full size Basketball courts (one has seating for up to 1,000 spectators) which can also cater for many other indoor sports e.g. Volleyball, Indoor Soccer
- Two Squash courts
- Tennis courts
- Softball diamond
- Artificial Hockey turf
- Artificial Cricket wicket
- Dance room

Avondale College Community Stadium is a partnership with Auckland City Council.

Please phone or E-mail the Stadium Manager for more information or a quote for your next event or training.

Telephone **(09) 828 9885**

E-Mail **facilities@avcol.school.nz**



AVONDALE COMMUNITY GARDENERS



Humanity Needs Water

Water is at the core of sustainable development. Ecosystems – including for example, forests, wetlands and grassland – lie at the heart of the global water cycle. All freshwater ultimately depends on the continued healthy

functioning of ecosystems, and recognizing the water cycle is essential to achieving sustainable water management. Yet most economic models do not value the essential services provided by freshwater ecosystems. This leads to unsustainable use of water resources and ecosystem degradation. There is a need to shift towards environmentally sustainable economic policies that take account of the interconnection between ecological systems. Adoption of 'ecosystem-based management' is key to ensuring water long-term sustainability.

Join us for a lunchtime workshop at the Rosebank Peninsula Hall, on Friday 17 April to discuss Water Issues in our suburb, & how to save on Water costs in the home. Together with Laurie Dee, we will then install a rainbarrel water system for the Hall, & demonstrate the integral use of rainwater, in a gardening ecosystem. Please contact Pam Andertonon : 828-8559 to register for this Workshop, oravondalecommunitygardener@gmail.com

Avondale Library Happenings

Auckland Council

Te Kaunihera o Tāmaki Makaurau



Pasifika celebrations at Avondale Library were a blast. Thank you to all the parents and children in making these events fun and interesting. Also special thanks to the performers and presenters including Creative Souls Project (Mal and Monty), the Pacific Island Performing Arts students and Atoga Amata preschool. We made Eikatu's, we danced and we sang. We paid homage to the beautiful and unique islands of the Pacific.



Manga and Comic Club has Arrived at Avondale Library! Georgia is keen to see teenagers interested in all things Manga, Anime and comics. For fun filled afternoons on every 1st Saturday of the month. Come join us for readings, viewings, drawing, cosplay and cool competitions!

Easter Storytime

Wednesday 1 April 2015, 10.30am

Join us for this special Easter celebration with stories, music and treats. Watch out, there could be some funny bunny business going down!?!

April school holidays: Carnival Masquerade

4 - 19 April

Roll up! Roll up! Come to Avondale library for a host of topsy-turvy carnival and mysterious masquerade activities and events.

Fun with shadow puppets

Thursday 9 April 2015, 10.30am - 11.30am

Come to the library to make and play with a shadow puppet, and try putting on a shadow theatre! All ages welcome.



Make your own skill game

Saturday 11 April 2015, 2pm - 3pm

Make your own skill game, like quoits, skittles, or a unique invention! Materials provided, though if you can bring more bits and pieces, you can make an even more interesting game. All ages welcome.

Mask making

Monday 13 April 2015, 10.30am - 11.30am

Make a masquerade mask, animal mask, or any mask you want! Or, make a Minecraft box head mask. All ages welcome.

Magic and juggling

Thursday 16 April 2015, 10.30am - 11.30am

Come along and learn some cool magic tricks, and how to juggle! All ages welcome.

Chess for success at Avondale

Every Friday, 3.30pm - 5pm

Come along to our weekly chess club to improve your skills and make new friends.

This event is suitable for children and adults of all levels of ability, from beginners to skilled players. All welcome. Chess boards provided, plus a GIANT chess set is available.

Learn at Avondale Library

Every Friday, 11am - 12pm

Learn basic computer skills and how to use the digital resources at Avondale Library.

Please contact Avondale Library on 09 374 1310 to book your place.

Need Council information? Don't forget to check out the council stand in the foyer of our library. It is situated opposite our community notice board.

See you at the Library! Check our new facebook page www.facebook.com/avondalelib

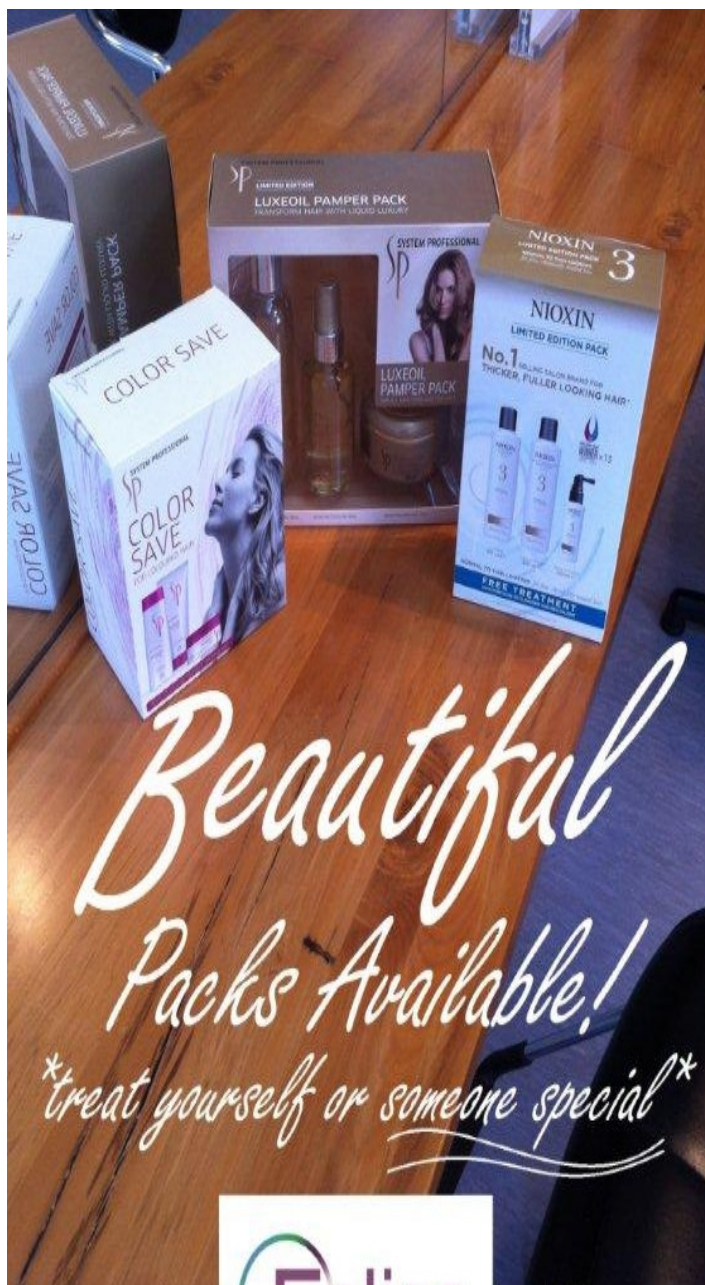
Avondale Library

93 Rosebank Road, Avondale 1026

Ph: 374 1310

www.aucklandlibraries.govt.nz

Twitter: Auckland_Libs



6 St Georges
Road, Avondale



Phone
828 6353



Avondale Shoes

*We specialises in
"Shoes" and
shoe repairs.*

Visit us now! Open Mon to Sunday.

1892 Great
North Road,
Avondale.
Ph 828-8904

Neelam Superette & Lotto

The Winning Shop...

visit us now if you feel lucky and purchase a Lucky Dip Ticket or a Scratchy. For all your grocery convenience plus more.. See the Manager Michael Vaidya or any of his friendly staff at 22 St. Georges Road, Avondale.

Open 7 days a week (Open up to 8.30pm)

Advertise in Spider's Web for only \$25.
Email: aba@avondale.net.nz



1962a Great North Road, Avondale
Email: avdental@xtra.co.nz, Ph: 09 828 5786; Fax: 09 828 6586
Website: avondaledental.co.nz

Hours 8am – 5pm {Monday - Friday}

Dr Tim Little (B.D.S. Otago)



Tim has been highly involved in the Auckland Dental Association. He was president for 2 years before handing this position over and, still involves himself by continuing to support the new President and the executive. With Tim's experience he was also called on to help as a Chairman on the peer review committee. Tim is also a foundation member of the New Zealand Academy of Cosmetic Dentistry. He also has a keen interest to continue with further education on implant surgery. Tim's outside interests include spending time with his family and their three teenage children. He is a keen skier and in the summer months windsurfs, cycles and supports his kids with their sailing.

Dr Victor Young (B.D.S. Otago)



Victor graduated from the University of Otago in 1985 and has been a partner at Avondale Dental since 1990. He is an Auckland Dental Association Welfare Officer, helping his colleagues in times of need. Victor is also a Dental Mentor, helping other dentists with issues in the business and clinical aspects of dentistry. He is a Foundation Member of the New Zealand Academy of Cosmetic Dentistry. He enjoys delivering high quality dentistry with a caring, personal approach to all his patients. Victor loves to relax with a good game of tennis and is a keen skier and golfer. He is married to Liz and they have two teenage children.

Priya Associate Dentist Dr Priya Singh Reid (B.D.S. Otago)



After graduating from Otago University in 1997, Priya started her dental career in Hamilton before moving to Auckland in 2000. She has been in private practice in Auckland since. Priya is a member of the Auckland Dental Association and the Auckland Academy of Cosmetic Dentistry. She is passionate about providing high quality, long term, reliable and friendly care for her patients. Outside of work Priya loves spending time with her family. She also enjoys staying active and is a keen cook.

Hygienist Jelena Knezevic (BHSc Oral Health)



Jelena is a dual qualified Dental Hygienist and Therapist. She worked for 5 years as a registered nurse prior to moving to New Zealand in 2001. She has always enjoyed working in an environment where she can help people. She decided to explore a new avenue and qualified at AUT with a Bachelor Degree in Oral Health. Her ambition is to help people in achieving optimal oral health. Outside of work she loves to relax with a good book, and when the need arises to get a bit more active likes to get involved with a bit of DIY.

Avondale Dental is located in Mid-West Auckland and only 10minutes from the CBD. Our objective is to provide high quality dentistry with a personal and caring service. We provide a full range of dental care using the latest technology and dental materials. Our equipment and sterilization procedures are state of the art.

Our motto is that we are, "The Creators of Great Smiles and Healthy Mouths for Life"

Our services:

- * Latest Technology Using Latest Laser, Cad Cam Technology And Abrasion
- * Crowns And Veneers
- * Cosmetic Dentistry Restoration Of Broken Teeth And Mouths
- * Bridges
- * I V Sedation For Nervous Patients And Nitrous Oxide
- * Implants - Crowns
- * Preventative Dentistry
- * Laser Whitening
- * Jaw Problems
- * Oral Surgery
- * Partial And Full Dentures
- * Dental Hygiene
- * Take Home Bleaching

Contact us now for an appointment or further information.

DINNERTIME!

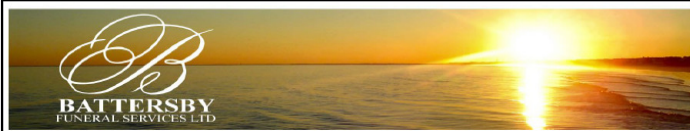
Are you hungry or
lonely or just like eating with others?

Well, Avondale Baptist Church invites you to join us for a delicious dinner at The Intersection Lounge - cnr Blockhouse Bay & New North Rds,

Avondale on the first Sunday of each month.

Bookings are essential so phone the Church Office on 828 0182 on the Thursday beforehand.

All welcome.



Funerals with a Tradition of Caring

Battersby is a family owned funeral service with three generations of history behind it over 80 years. Battersby is a well established and trusted name in funeral services. What Mark and Jennifer provide is more than just formality, it is part of the process of healing and celebrating life.

* Available when you need us. * Able to assist with memorial stones, plaques
* Chapel reception lounge and viewing hours. * One account to cover all funeral expenses.

* Pre arranged and pre paid funerals.

Details: 1855 Great North Road, Avondale: Ph: 09-828-5113

Email: battersbyfuneralservices@xtra.co.nz

Website: www.battersbyfuneralservices.co.nz

JUST FOR A LAUGH...

BANK ROBBERS

An Englishman, a Scotsman, and an Irishman get twisted at the local pub one night and conspire to rob the local bank. Drunk as they are, they try and rob the place but are too drunk to pull it off. As the alarms scream, they leg it out of the bank and down the alley. Hot on their heels are the cops, responding to the alarm. As the three drunks round a bend, they spot a Cats and Dogs Home and jump over the fence into the kennel yard. They see three burlap sacks lying on the ground and they each crawl into an empty bag. The cops leap over the fence behind them and spot the three bulging sacks on the ground. One cop kicks the first sack and the Englishman says, "Bark! Bark!" "Ah, must be a dog!" says the cop and he kicks the second sack. The Scotsman says, "Meow!" and the cop nods his head, exclaiming, "Must be cats!" and turns his focus on the last sack, kicking it sharply. The Irishman cries out, "Potatoes!"



BUSINESS AFTER 6 –

**Amanda 4 Flowerz,
65 Blockhouse Bay Road, Avondale**

Monday 20 April from 6pm onwards,
great opportunity for members to network.

All Mainstreet members interested in attending our

Business After 6,

please RSVP numbers attending, to

Bernie at aba@avondale.net.nz

no later than 15 April 2015.

ONLY \$1 PER WEEK!

Home Interaction Programme for Parent and Youngsters

Help prepare your child for school

HIPPY IS AN EDUCATIONAL PROGRAMME FOR PRE-SCHOOL CHILDREN, PREPARING THEM FOR A SUCCESSFUL START TO SCHOOL.

CALL OR COME IN & ENROL YOUR CHILD TODAY FOR 2015!

HIPPY
Educating children
Empowering families
Engaging Communities

Based in Rosebank School
Avondale

HIPPY Coordinator: Elisa Niovara
217 Rosebank Road, Avondale
PH: 828-6319 MB: 022 3507748
Email: hippy@rosebank.school.nz

Criteria applies

Deadline for March Spider's Web is Thursday
26 March 2015, at 12 noon. All enquiries
please email: aba@avondale.net.nz

COSMOPOLITAN RETIREMENT VILLAGE

17 Geddes Terrace, Avondale



Under new village management 2015 is set to be a big year at the Cosmopolitan Retirement Village .

If it is a small affordable boutique Village that you are looking for then contact me on 828 2885 or email

denise@cosmopolitanvillage.co.nz I would love to show you around this unique retirement village designed for the over 55 year old independent person.

The village is nestled right in the heart of Avondale within walking distance to shops and transport ,with apartments priced from *\$89,000 why wait any longer . Free up your assets and start living.

* on availability *

Contact Denise Te Tai, Village Manager, Cosmopolitan Village, Ph. (09) 828 2885 or 021 132 5944.

HAPPY HOLIDAYS!

EXTENDED

Due to popular demand, we have extended this great deal until April!



Now until 1 April, do a 27 KG wash from \$4 on Mondays, Tuesdays and Wednesdays.

Get your wash done at this low pre-holiday price and free up your weekends!

**Waterview
Laundromat**

35 Daventry St, Waterview





Issue 34 - April 2015



We had a great street BBQ in Miranda Street in March which was done as a joint venture with Housing NZ. We also had Neighbourhood Support and Community Patrols come along and talk to residents about crime prevention stuff.

This event was really positive for residents and staff alike, and provided an excellent opportunity to engage and just talk with people in our new area. We will be looking to do another event some time in the near future in the other part of our new 'patch', and details will be sent out closer to the time. to the relevant houses.



April is a busy month for significant dates, with Easter in the first week-end and ANZAC day on the last weekend. And in between those is the school holidays.

So traffic will be busy around those two week-ends (ANZAC is a long weekend as well) as people travel, and there will be risks around kids being out of school and around neighbourhoods during the day time, both from a crime and crash perspective. So drive carefully, and look out for and report any suspicious types of behaviour by calling Police on 111.

<https://www.facebook.com/AvondaleNPT>



GOOD THINGS TAKE TIME!!
Over 20 years ago there was a red light camera at Ash and Rosebank, and now it's finally back - and active. And the NSP first raised the issue of a light controlled pedestrian crossing back in 2012, but it was turned down due to cost and lack of demand. Anyway, it's here now.



IMPORTANT CONTACTS

Emergencies - 111

Non-emergencies - (09) 571 2800

Crimestoppers - 0800 555 111

Rosebank/Waterview Neighbourhood Policing Team: (09) 820 5701 (NOT staffed 24/7)

Email: Rosebank.Waterview.NPT@police.govt.nz

Neighbourhood Safety Panel:

info@nsp.co.nz

www.nsp.co.nz



Duncan Macdonald
JP
Chairman
Avondale Business
Association and
Avondale Community
Society Inc.

the Chairman's Chat

AVONDALE PRIMARY SCHOOL – GALA DAY

The ABA have always had a great relationship with the Avondale Primary School, a lot of shop keepers chipped in some of their produce, did a lot of baking and we raffled the lot of it off. We raised over \$700 dollars for the school plus free advertising in Spider's Web, overall it was a fun day had by all.

\$2 Shops

It is with sadness and deep regret I have to report the demise of 3x \$2 Shops. This only leaves us with 7. In a mall situation the owners can decide what businesses they want. Unfortunately, on Mainstreet situations, the Business Associations cannot dictate who goes into these empty shops. We can work with the owners but usually our help is turned down. Most Landlords seemed to just give properties over to first come first served basis with no regard to the needs of the community. So in all probability with inflation, we will get \$3 dollar shops.

Pictured on right top, from left: Alison Turner, Sandra Paterson, Diane Phillips, Amanda Phillips. **2nd photo from left:** Amanda Phillips & son Cooper; **Chairman ABA:** Duncan Macdonald; **School Principal:** Greg Chalmers receiving cheque raised at Gala Day.



AVONDALE RSA

Rumours have been flying around about the Avondale RSA. Quite simply they have an offer on their land and surrounding buildings of around 9 million and they will have about 2-years grace to find a new home.

Whatever goes on the site, will probably be apartments, which will be a really big development. You may have noticed a sign from across the road from the RSA on Layard Street, corner side, with a sign 'For Sale' with plans for 32 apartments. Myself and the ABA have already been encouraging towards apartments close to our train station. So it look as so, the future for Avondale is starting.

Big thank you goes out to Auckland Transport for renewing our rubbish bins and public seating. Thank you also, to their staff that pick up rubbish around town in the early hours of the morning, maintaining and clearing the gardens. The Town Centre is looking much better.

Deadline for the May Issue of Spider's Web is Thursday 30 April 2015 at 12 noon.

All enquiries please email Bernie on: aba@avondale.net.nz

Sell with
Kathryn & Paul Davie



LJ Hooker

Kathryn M: 021521256 W: 6268113 E: davie.blockhousebay@ljh.co.nz
Paul M: 0222448633 W: 6268118 E: pdavie.blockhousebay@ljh.co.nz
Licensed Salespeople REAA 2008
Austar Realty Ltd | Licensed Agent, REAA 2008 1 Donovan Street, Blockhouse Bay, Auckland