

# The Spider's Web

Delivered free to over 5,200 homes in Avondale and Waterview



June 2014

AVONDALE No. 133

## Avondale - Waterview Historical Society

### Traherne – Avondale's second island

Head out along the North-Western motorway from Waterview, westward towards Rosebank Road, Te Atatu and beyond. Just before you reach the Patiki interchange you might see a blur of wetlands, mangroves and perhaps birdlife beneath State Highway 16's causeway there. You will have passed over one of Avondale's two main off-shore islands (the other is the larger Pollen Island): Traherne, around 18-20 acres of mud, shell, scrub and precious animal species.

Both Pollen and Trahern Islands are basically low-lying banks of mud and shell. Half of Traherne is underwater at high tide, and wasn't even surveyed until 1889, more than 40 years after the more famous Pollen Island. But when Henry Douglas Morpeth Haszard surveyed the island, noting that it was covered in wiki and manuka, with mud-flats all around and between it and the mainland, he must have felt that it was worth something. In 1894, he and his brother, fellow surveyor Norman Haszard, purchased title to the island, and were to remain owners until 1906.

H.D.M. Haszard was noted in his field. He surveyed the Kermadec Islands in 1887, was responsible for the survey

of the Waihi and Waitekauri mining townships, and carried out a survey of Niue, while he was in the Pacific recuperating from blood poisoning, in 1903. Haszard was a founding member of the New Zealand Institute of Surveyors. He retired in 1921, living out the rest of his days in Waihi.

In late 1927, Ernest Tasker bought the island. He already owned a section towards the end of Rosebank Road, and in 1928 tried selling both his land on Rosebank and the island to a firm called the Dale Shell Lime and Sand Company Ltd. However, things didn't work out, the company vanished, and Tasker was to remain as Traherne's owner until 1947. Some of Avondale's residents from that time recall him burning heaps of shell until all that was left was the powder – lime, valuable both when used in building mortar and upon the fields of crops. It was lime from Pollen Island, and perhaps also from Traherne, that Avondale Road Board shipped to their neighbours in Mt Albert during the 1922 typhoid outbreak, to decontaminate the affected springs behind the Asylum grounds.

In 1954, the last private owner of Traherne Island, Charles Whitfield Ralfe, had the island taken from him by the Ministry of Works for the planned motorway. Since the 1960s, all that can be seen of Avondale's second island by most of us is a brief glimpse, but usually hardly more than a blur, while on the way to somewhere else at speed.

### A message in a bottle ...

"Something in the nature of a curiosity was recently received by Mr. William McLean, formerly of Brown Street, Avondale [now upper Rosebank Road], in the form of a message rescued from the sea. On June 4, 1915, Lieut.Col. H. F. Jacob, first-assistant of the British Resident's Staff, at Aden, picked up in the Arabian Sea a bottle containing a letter reading as follows:

"Troopship Willochra, May 6 1915. To the Finder,—Have had a splendid voyage. Weather excellent. Would you please communicate with my father, Wm. McLean, of Brown Street, Avondale, Auckland, New Zealand. P.S. Tell him you received this message in a bottle from his son Don. Good Luck."

The note, though rather dirty and discoloured, showing signs of the water having entered the bottle, was easily legible. The finder immediately forwarded the interesting document to the soldier's father now living at Parua Bay, Whangarei Heads."

Auckland Star 21 July 1915

Private Donald McLean (12/2060) was working for cordial manufacturer Grey & Menzies when he entered military service in January 1915. He served at Gallipoli, was wounded in October

1915, promoted up to sergeant in January 1917, and was killed in action at Ypres in 1917.

**Lisa J Truttman** (AWHS, Ph. 828-8494 for information)

## FACTORY SALE TOYS TOYS TOYS

WHEN:

WHERE:

Thursday 5th June - 8am to 5pm

Thos Holdsworth & Sons Ltd

Friday 6th June - 8am to 5pm

386 Rosebank Road,

Saturday 7th June - 8am to 5pm

Avondale, Auckland



TOYS, CRAFT, GAMES, PUZZLES + LOTS MORE!

Avondale



Published by the Avondale Business Association

Phone (09) 820 0648

Fax (09) 820 0649

PO Box 19 730 Avondale

Email: [aba@avondale.net.nz](mailto:aba@avondale.net.nz)

Website: [www.avondale.net.nz](http://www.avondale.net.nz)

Advertise here for as little as \$25 per month.

"Please note: Payment is required once final proof is accepted before printing."

DISCLAIMER: Every effort has been made to ensure the accuracy of information in this newsletter, but the editors and publishers accept no responsibility for any errors or omissions.



## Farewell Doug and Brigitte Grant, owners of Avondale Pharmacy

Finally..., Doug and Brigitte Grant are retiring after 26-years in Avondale.

Duncan Macdonald, Chairman of the Avondale Business Association is sad to see Doug leaving after so many years of service to the Avondale Community, but suppose we are all entitled to retire at sometime in our lives.

"No doubt Brigitte will keep you busy, catching up on all that neglected handy work around the house. I wish you both well on your retirement. All the best and thank you for always serving us with a smile while filling our prescriptions".

You will be dearly missed around here.

### Response to letter to the editor - May

"I feel it is my duty to speak up and support Duncan MacDonald in his work to make known to the voters of Avondale and its surrounding suburbs, that this board and Councillor Clow have sold Avondale down the river. We, as the previous Avondale Community Board and the previous Whau Local Board have worked very hard to ensure the Swimming Pool came to Avondale, which is Recreation Facility poor. Now the Labour based Whau Local Board of which Catherine Farmer is the chair and 5 of the 7 members are Labour/City Vision stooges have signed away another recreational facility that should have been located in Avondale. I attended a public meeting last month in the hall at the Avondale Primary School and this very question was asked of the Board Chair Catherine Farmer, and the Whau Councillor Ross Clow, "has the decision to locate the swimming pool in New Lynn been made?" They both responded "NO!" I know of the existence of a signed letter by Catherine Farmer acknowledging the fact that that decision had been made and it is dated prior to that meeting. This board is not to be trusted and mark my words we will not see the Community Centre replaced in the near future if at all by this board.

I applaud Duncan MacDonald and Derek Battersby for staying on the board to at least try to keep a modicum of honesty in our local board decision making. Good luck guys, you will need it."

**Paul Davie**

## Kathryn & Paul Davie Your local area specialists

Kathryn & Paul Davie  
021 521256  
022 2448633  
DDI 6268113  
A/h 828 9265  
Austar Realty Ltd. Licensed Agent REAA 2008  
**LJ Hooker**  
Kdave.blockhousebay@ljh.co.nz  
pdavie.blockhousebay@ljh.co.nz



### ANNA LECHTCHINSKI

*Big Brand Attributes, Boutique Attitude*

I am **shouting** across my point of difference! Flowers, staging advice, garden care, free professional photography & 18 years of practical knowledge are all included when you sell with me.

Visit my website [www.annaatavondale.com](http://www.annaatavondale.com), talk to my previous clients. THEY ARE AVONDALE!  
Call for a chat 027 271 8630 or email [a.lechtchinski@barfoot.co.nz](mailto:a.lechtchinski@barfoot.co.nz)  
Follow on Anna Lechtchinski's Property Page

**Barfoot & Thompson**

Licensed under the Real Estate Agents Act 2008



## Avondale Shoes

*We specialises in  
"Shoes" and  
shoe repairs.*

**Visit us now! Open Mon to Sunday.**

**1892 Great  
North Road,  
Avondale.  
Ph 828-8904**

# Whau Local Board Meetings

At the 21 May meeting of the Whau Local Board ...

## Ward Councillor's Update

Councillor Ross Clow referred to the Annual Plan process and continued adjustment towards rates equalisation. Involved with ensuring that funding continues to complete New Lynn redevelopment. There is however no budget at the moment to start the Avondale development plan. The Governing Body and Local Boards will face decisions to sell public land to fund development plans like at that Avondale.

## Deputations: Safer West Community Trust

The Trust presented West Auckland Safety Plan to the Board. They formed in 2012 to keep International Safe Community Status granted in 1994. The West Auckland Safety Plan focuses on areas such as home safety, drowning prevention, family violence, road safety, safer public spaces and safer use of alcohol.

## Zeal Education Trust

Zeal originated in Wellington in 1995 when a youth venue called Global Tribe was launched by the Body & Soul Trust. However, funding became an issue, and the venue closed, until the Wellington City Council offered financial support. The venue was relaunched, Body & Soul became a charitable trust, and rebranded themselves as Zeal.

In 2008 the Global Café youth centre opened at the Henderson Recreation Centre at 20 Alderman Drive, providing internet access, an art gallery, recording studio and a media and editing suite, along with performance area, rehearsal rooms and a café. This has since been renamed as Zeal West which provides programmes for youth from Avondale and the rest of West Auckland. Their programmes today are still based on the creative arts, but they have also recently started a youth market. They assist young people with advice with regard to starting businesses. On 31 May, Zeal Coffee Shop will open, run by former Zeal volunteers. A screen printing business enterprise is encouraged. "When we face an issue, we do it through creativity."

Board Member Duncan Macdonald asked if this programme could be set up in Avondale. The response was that if another programme was set up, it would compete with Zeal West for Council funding. The representative was more in favour of satellite programmes, but based at the main facility. They did say that they were open to consider partnerships with existing groups.

## Portage Ceramics Trust

Lorraine Wilson presented a report to the Board. Trust has received funding for a Jiffy Lifter to move equipment around, and has received \$40,000 towards their contract registrar. The Trust has issues with the building they use, and can't admit the public during events such as Auckland Heritage Festival. Have adopted a bi-lingual name for their museum: Te Toi Uku / Crown Lynn @ Clayworks, and will take part in an exhibition later this year at Object Space in Ponsonby.

Public Forum: Michael Brennan

Mr Brennan spoke with regard to a March 2014 report on stormwater. He suggested the Board should be more proactive with regard to the information being processed. Concerns regarding stormwater disposal and the effect of the environment. The report, he said, has highlighted an overly narrow professional network, lack of multi-sectorial champions and political leadership, and a lack of knowledge and trust in water-sensitive technologies amongst council staff. Board Chairman Catherine Farmer asked if Mr Brennan had evidence as to his assertions. He said that he had, but Board Chairman Farmer encouraged him to present remedies rather than criticism of Council staff. Mr Brennan was encouraged to get in touch with Board Member Duncan Macdonald as the Board's spokesman on this issue.

## Whau Local Board Chairman's Report

"Around 100 interested people turned up to a community workshop at the Avondale Primary school hall on 10 April. An update was given on what is happening around the planning and action for Avondale and attendees were able to share their thoughts and outline what was important to them. It was great to see so many people interested in helping move Avondale forward. I would like to acknowledge the assistance that the Avondale Community Action Group provided on the night in helping collecting thoughts across the tables. We are now planning for a future meeting in July."

"Board member Seumanu Matafai and I attended the Anzac Day march and wreath laying at Avondale Memorial Park. Many Returned Services personnel attended and also school students. Numbers attending Anzac Memorials are increasing with more younger people taking an interest in commemorating this event in World War 1."

"Board Member Derek Battersby and I presented to the Governing Body on our local board agreement for 2013/14. We highlighted a number of areas which the Councillors appeared interested in and asked a number of questions on. The Mayor was supportive of our request for all Council areas to work better together to clean up the banks of Whau river, his office was asking for details of the locations we had highlighted straight after the meeting. We also spoke again about the need for Council to allocate budget to take forward plans to improve Avondale. The Board also had another win, in that we made a request for regional funding for the CAB temporary accommodation in Avondale, and this funding has just come through in the Mayor's Annual Plan report."

## Whau Neighbourhood Greenways Project

On 16 April 2014 the Whau Local Board adopted the draft April 2014 Whau Neighbourhood Greenways Plan and approved the priority list of eleven greenways projects. It was resolved at that time that the Whau Local Board "directs that concept plans be prepared for each of the eleven priority greenways projects, including visual representations, and that these concept plans be brought to a workshop of the Whau Local Board by the end of June 2014 for consideration of which projects should be prioritised for more detailed planning and local consultation."

At the May meeting the Board allocated an additional \$48,575 from its 2013/14 budget to undertake concept planning of the priority greenways project sites.

The eleven priority sites are:

- Heron Park to Holly Street, Avondale
- Whau River footbridge – Archibald Park to Avondale West Reserve, Kelston to Avondale
- Harmel Reserve to Maybelle Place, Kelston
- Archibald Park to Lynwood Road, Kelston
- Cliff View Drive to Godley Road, Green Bay
- Rizal Reserve to Riverbank Road, Avondale
- Miranda Reserve connections, Blockhouse Bay
- McWhirter Place to Busby Street, New Lynn
- Craigavon Park to Kinross Street, Green Bay
- Riversdale Park ring route, Avondale
- Aronui Esplanade to Cobham Reserve, Kelston

## The Board and a flourishing creative community

In July 2013 the Whau Local Board requested guidance on how the Board could support the provision of arts and culture in their Local Board area. To gain an understanding of the art and culture needs of the area, a provision of arts and culture in the Whau Local Board area, a report was completed. The short term recommendations include the Board funding a Whau Arts Broker, whose role would be to enable a wide range of arts and artistic expression to be experienced in the Whau. There is already an Arts Advisor employed by Council, but that person has to cover 8 board areas, so this plan would allow someone to concentrate specifically on the Whau area.

The Board endorsed the provision of arts and culture in the Whau Local Board area report. They also approved a budget of \$85,000 in 2014/15 budget for arts activity in the Whau area. This amount is made up of \$35,000 towards cost of a Whau Arts Broker, and \$50,000 to support opportunities for arts and culture within the Whau area.

## Avondale Development Programme Update

A report was presented to the Board in its agenda. The Board requested ACPL engage with the Board in the development of the Expressions of Interest Documentation for Council properties within its area, and that any requirements for roading be progressed before it is put on the market. The Board also endorsed inclusion of funding in draft Auckland Long Term Plan for the development of community – library – leisure facilities in Avondale, and that staff develop options for the library and community centre.

Shop in Avondale Mainstreet...  
where it's Market Day everyday...

## Avondale College Community Facilities

The Avondale College Community Stadium is available for hire:

<b>Monday - Friday term time</b>	<b>6:00 pm - 10:00 pm</b>
<b>Weekends/School Holidays</b>	<b>All day</b>
<b>Bookings taken weekdays</b>	<b>10:00 am - 6:00 pm</b>

### Sports Facilities available are:

- Two full size Basketball courts (one has seating for up to 1,000 spectators) which can also cater for many other indoor sports e.g. Volleyball, Indoor Soccer
- Two Squash courts
- Tennis courts
- Softball diamond
- Artificial Hockey turf
- Artificial Cricket wicket
- Dance room

Avondale College Community Stadium is a partnership with Auckland City Council.

Please phone or E-mail the Stadium Manager for more information or a quote for your next event or training.

Telephone **(09) 828 9885**

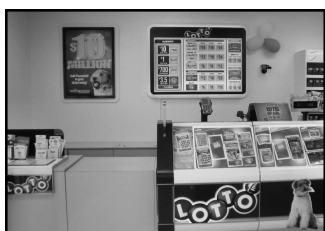
E-Mail **facilities@avcol.school.nz**



## AVONDALE CARING FRIENDSHIP CENTRE

Communicare CMA friendship centre for senior, and disabled folk in the community is welcoming new members. Held in the Baptist Church hall corner New North & Blockhouse Bay Road. Wednesdays 9.30am to 1pm approximately. Members can enjoy games, crafts, and other activities, morning tea and lunch served \$5 per day. For further information please phone 09 631 5968 or call in, we would love to see you.

## Neelam Superette & Lotto



Open up to 8.30pm

**Mon-Sun,  
7-days a week**

**22 St Georges Rd,  
Avondale**

For all your grocery convenience and purchasing that lucky Lotto Ticket or Scratchy, the Manager, Michael Vaidya and his friendly staff are always ready with a smile to assist you.

**Come on down and see us.**



## Avondale Plumbing Services Ltd



**Jaik Stone**

NZ Certifying Craftsman Plumber

**M: 021 916089 P: 09 828 4505**

**E: avondaleplumbingnz@gmail.com**

# AVONDALE DENTAL

**Ph: 09 828 5786 Fax: 09 828 6586**

1962a Great North Road, Avondale

Email: [avdental@xtra.co.nz](mailto:avdental@xtra.co.nz)

Website: [avondaledental.co.nz](http://avondaledental.co.nz)

**Hours 8am – 5pm {Monday - Friday}**

### Dr Tim Little (B.D.S. Otago)



Tim has been highly involved in the Auckland Dental Association. He was president for 2 years before handing this position over and, still involves himself by continuing to support the new President and the executive. With Tim's experience he was also called on to help as a Chairman on the peer review committee. Tim is also a foundation member of the New Zealand Academy of Cosmetic Dentistry. He also has a keen interest to continue with further education on implant surgery. Tim's outside interests include spending time with his family and their three teenage children. He is a keen skier and in the summer months windsurfs, cycles and supports his kids with their sailing.

### Dr Victor Young (B.D.S. Otago)



Victor graduated from the University of Otago in 1985 and has been a partner at Avondale Dental since 1990.

He is an Auckland Dental Association Welfare Officer, helping his colleagues in times of need. Victor is also a Dental Mentor, helping other dentists with issues in the business and clinical aspects of dentistry. He is a Foundation Member of the New Zealand Academy of Cosmetic Dentistry. He enjoys delivering high quality dentistry with a caring, personal approach to all his patients. Victor loves to relax with a good game of tennis and is a keen skier and golfer. He is married to Liz and they have two teenage children.

### Priya Associate Dentist Dr Priya Singh Reid (B.D.S. Otago)



After graduating from Otago University in 1997, Priya started her dental career in Hamilton before moving to Auckland in 2000. She has been in private practice in Auckland since. Priya is a member of the Auckland Dental Association and the Auckland Academy of Cosmetic Dentistry. She is passionate about providing high quality, long term, reliable and friendly care for her patients. Outside of work Priya loves spending time with her family. She also enjoys staying active and is a keen cook.

### Hygienist Jelena Knezevic (BHSc Oral Health)



Jelena is a dual qualified Dental Hygienist and Therapist. She worked for 5 years as a registered nurse prior to moving to New Zealand in 2001. She has always enjoyed working in an environment where she can help people. She decided to explore a new avenue and qualified at AUT with a Bachelor Degree in Oral Health. Her ambition is to help people in achieving optimal oral health. Outside of work she loves to relax with a good book, and when the need arises to get a bit more active likes to get involved with a bit of DIY.

Avondale Dental is located in Mid-West Auckland and only 10minutes from the CBD. Our objective is to provide high quality dentistry with a personal and caring service. We provide a full range of dental care using the latest technology and dental materials. Our equipment and sterilization procedures are state of the art.

Our motto is that we are, "The Creators of Great Smiles and Healthy Mouths for Life"

#### Our services:

- \* Latest Technology Using Latest Laser, Cad Cam Technology And Abrasion
- \* Crowns And Veneers
- \* Cosmetic Dentistry Restoration Of Broken Teeth And Mouths
- \* Bridges
- \* I V Sedation For Nervous Patients And Nitrous Oxide
- \* Implants - Crowns
- \* Preventative Dentistry
- \* Laser Whitening
- \* Jaw Problems
- \* Oral Surgery
- \* Partial And Full Dentures
- \* Dental Hygiene
- \* Take Home Bleaching

**Contact us now for an appointment or further information.**



## Avondale Library Happenings



Winter chills, cold wet weather! The library has a HOT new service. OneClickdigital is our brand-new eAudiobook borrowing service, which contains a range of material from classic literature through to modern bestsellers. Listen to your favorite stories on any device. Check it out today along with our other eAudio and eBook services. Just click on the Digital Library tab on our website: [www.aucklandlibraries.govt.nz](http://www.aucklandlibraries.govt.nz)

Don't forget it's time to start knitting and crocheting the winter chills away. We have an amazing selection of books to help you in these fields. Look at our cooking books to get ideas for a mi-winter Christmas feast.

We would like to take this time to introduce and welcome Freya McCall, our new **Akozone Learning Facilitator**. Akozone is our free after school homework centre. It runs Monday to Thursday 3pm to 5.30pm (during school terms, years 5-8). This is the place to get help and guidance with homework questions and activities, whether you need to type up an assignment on the computer or find the perfect books to help research an assignment.



**Reading Buddies:** Shared reading programme – calling teenagers!

We need you to help young children with their reading. Give 15 to 30 minutes of your time to listen to children reading their books on a one-to-one basis. Being a volunteer in the programme counts towards your community involvement and can be included in your curriculum vitae. For more information speak to a librarian.

## AVONDALE COMMUNITY GARDENERS



### Developing Biodynamic Orchards

The biodynamic method focuses not just on the commonly acknowledged material inputs, but also on the innate nature of the land & the crops concerned. Site-appropriate solutions have been the focus for planning two small orchards on local

Avondale reserves. Harnessing the naturally available attributes of the sites as well as acknowledging the needs and assistance of the local community have been centrepiece for the planning. It will be important to develop a thorough understanding and appreciation of these new Biodynamic Orchard environments. Selecting suitable types of trees should lay the foundation for an increasingly productive addition to the local Avondale environment. Preventive & proactive measures rather than dealing annually with the symptoms of unsuitable choices is core to biodynamic practice. This will be hinged on the use of Biodynamic horn-manure and horn-silica preparations as well as the use of the compost preparations to direct all solid and liquid fermentation processes. We do not envisage the use of agrichemicals. Inputs like fertilisers should reflect the recommendations of the New Zealand De-meter Standard adopted as best practice guide. Well timed activities will produce the best results.

Join ACG with : Dieter Proebst, of Treedimensions  
Workshop : Saturday 14 June, 11am – 2pm \$5 entry  
Where : Rosebank Peninsula Hall, 212 Rosebank Rd  
Topic : Selection of Fruit Trees for Avondale

W : [www.facebook.com/avondalecommunitygardeners](http://www.facebook.com/avondalecommunitygardeners)  
E : [avondalecommunitygardener@gmail.com](mailto:avondalecommunitygardener@gmail.com)  
Ph: 828-5854 to register with Imi ...xxx

## THANK YOU TO OUR ADVERTISERS Issue No. 133

**Congratulations** to Adrianna Hall, our winner of the 'Take 5 Easter Competition'.

**Other things to check out:**

Art Display  
Jharna-Kala Art Exhibition – Throughout the month of June there will be a display of the abstract paintings of the late Sri Chinmoy.

Upcoming events in June  
"Book a Librarian" sessions – Fridays @11am. Want to know how to request a magazine, use our online resources. Come in or phone to book a librarian for a session.

Matariki celebrations take place 28 June – 28 July. The rising of the Matariki star constellation announces the Māori New Year. It is a time for whānau and friends to come together to acknowledge the successes of the past year and look towards the year ahead.

See you at the Library!

Avondale Library  
93 Rosebank Road, Avondale 1026  
Ph: 374 1310  
[www.aucklandlibraries.govt.nz](http://www.aucklandlibraries.govt.nz)  
Twitter: Auckland\_Libs

Advertise here for as little as \$25 per business card size advert.  
Email: [aba@avondale.net.nz](mailto:aba@avondale.net.nz) now.

## DINNERTIME!

Are you hungry or lonely or just like eating with others?

Well, Avondale Baptist Church invites you to join us for a delicious dinner at The Intersection Lounge - cnr Blockhouse Bay & New North Rds, Avondale on the first Sunday of each month. Bookings are essential so phone the Church Office on 828 0182 on the Thursday beforehand. All welcome.

## 'Community Hub' now open in mainstreet of Avondale

Avondale Community Action have opened another temporary premises located at 1881 Great North Road ( opposite the Taro Premisation ) and are open 11-2 weekdays, ( for any scheduled community events. So drop in to find out what locals are doing in the area, bring your posters to add to our community Notice board to inform others of events, classes, services in Avondale.

The key focus is our RANDOM HOUSEHOLD SURVEY which is Half Way there. We have visited all of the 360 selected houses at least once, and are now heading back out to the addresses that were not home the first time. So if you received a flyer in your letterbox please call us. Jody on 09 828 8796 or 021 2453232 to book a time to be interviewed. There is still the opportunity to become a volunteer interviewer. A lot of people living in Avondale use English as a 2nd language, maybe you could help with interpreting? it is a great way to get to know people in your community. Or you might have a spare couple of hours one weekend? We can pair you up with one of our friendly trained interviewers, so you can play a part of this community action. References will be provided. To become involved phone us or contact us by email [avondalecommunityaction@gmail.com](mailto:avondalecommunityaction@gmail.com). You can also follow us on facebook: [avondale community action](https://www.facebook.com/avondalecommunityaction) or look online at [www.avondalecommunityaction.com](http://www.avondalecommunityaction.com).

Find us  
and  
like us



on



Facebook

[www.waterviewlaundromat.co.nz](http://www.waterviewlaundromat.co.nz)

**Waterview  
Laundromat**

35 Davenport St, Waterview

Do your  
laundry and  
surf the  
internet



We have  
**WiFi**

- **Bigger Machines** • great for washing bedding and other large items
- **Cheaper Prices** • self service \$1 & \$2 coin operated



**Open 7 days, 6am - 10pm**

**Coin change available at Waterview Superette:**

**1481 Great North Rd, Waterview, ph: 09 828 0482**

**email: [waterviewsuperette@xtra.co.nz](mailto:waterviewsuperette@xtra.co.nz)**



Issue 25 - June 2014

## BULLETS OR PELLETS???



The two photos above are a graphic example of why you shouldn't have air pistols displayed in public places. Both are of Glock 17 pistols, but one fires lead or plastic pellets, and is an air pistol. The other fires 9mm bullets, and is the current Police sidearm. The NPT seized the air pistol version recently, but both public and Police who saw the weapon could not tell whether it was real at first glance. The weight, balance, and working parts were almost identical to the real thing, and this presents a very real risk to someone having this in a public place of not only being challenged by Police, but any threat being 'neutralised', which would potentially be a tragic outcome.

### Avondale Youth Awards 2014

A fantastic night was held in May to acknowledge and celebrate the young people in Avondale who are leading and achieving some great things. Around 130 invited guests attended to support the worthy award recipients.

There were 12 awards given out, in leadership, sports, and arts/culture categories, as well as several awards in the 'Future Leaders' category for children from Avondale Intermediate.

A huge thank you to the great folk who organised the event (Constable Charlene was on the committee) for putting together such an inspiring occasion for our aspiring young people. And also a grateful acknowledgement to all the businesses who embraced the vision and supported the event in services, products, and sponsorship of each award.



**REMEMBER** - if you see something suspicious, call **111** to report it, so Police can respond quickly. Note their clothing, gender, build, race, and for a vehicle try and get the plate, colour and type of car. That way, you may actually help prevent a crime from happening. Safer Communities Together is what it's about.



*Celebrating young people in the  
community of Avondale*

*Wednesday 21st May 2014*

### NOT SURE IF MOTORCYCLE



OR CAR WITH ONE HEADLIGHT OUT

With a lot of commuting being done in the hours of darkness, we are concentrating on one of the most obvious safety risks, being cars with one headlight. Please check your lights - the fine is \$150, but most times motorists will be given 14 days compliance to get the light fixed (if car has current WOF), come to a station to show it now works, and get the fine waived.



### IMPORTANT CONTACTS

**Emergencies - 111**

**Non-emergencies - (09) 571 2800**

**Crimestoppers - 0800 555 111**

**Rosebank/Waterview Neighbourhood Policing Team: (09) 820 5701 or 0275 822 363 (NOT staffed 24/7)**

**Email: Rosebank.Waterview.NPT@police.govt.nz**

**Neighbourhood Safety Panels:**

**rosebanknsp@gmail.com**

**waterviewnsp@gmail.com**



## Just for a Laugh!

**But hell... enough about me...  
how are you doing?"**

There I was sitting at the bar staring at my drink when a large, trouble-making biker steps up next to me, grabs my drink and gulps it down in one swig.

"Well, whatcha' gonna do about it?" he says, menacingly, and I burst into tears.

"Come on, man," the biker says, "I didn't think you'd CRY. I can't stand to see a man crying."

"This is the worst day of my life," I say. "I'm a complete failure. I was late to a meeting and my boss fired me. When I went to the parking lot, I found my car had been stolen and I don't have any insurance. I left my wallet in the cab I took home. I found my wife with another man...and then my dog bit me."

"So . . . I came to this bar to work up the courage to put an end to it all. I buy a drink, I drop a capsule in and sit here watching the poison dissolve; and then you show up and drink the whole damn thing....!"

But hell... enough about me... how are you doing?"

Deadline for the July issue of Spider's Web is Thursday 26 June 2014 at 12 noon.  
All enquiries please email: [aba@avondale.net.nz](mailto:aba@avondale.net.nz) or phone Bernie on (09) 820-0648.

R E W A R D	LOST CAT ORCHARD STREET WHITE & BROWN FLUFFY CAT	R E W A R D
		
	PH: 8209252 / 0210505269	
	Email: <a href="mailto:brittany2@xtra.co.nz">brittany2@xtra.co.nz</a>	



## AVONDALE RSA (Inc)

7 Layard Street, Avondale, (top of Rosebank Road)

Phone: 828-5000

Enjoy darts, Pool, Indoor Bowls,  
18 Gaming machines, Library,  
3 Big Screens, TAB  
Facilities, Bus Trips, Sky TV.  
**Live Entertainment  
Friday and Saturday nights.**



There is always something happening at the Avondale RSA.  
**New Members Welcome.**



A spacious and well equipped Montessori learning environment for children aged 2 ½ to 5 years.

1 Larch Street, Avondale

Ph 09 828 4967

[www.casamontessori.co.nz](http://www.casamontessori.co.nz)

For parents feedback, search us on Google.

**TAKING ENROLMENTS NOW**

## YOUR ONE STOP SHOP! Beckett Real Estate R.E.A.A

*Family owned business servicing the community for over 50 years!*

### Landlords/Home Owners

We urgently require 2-3 bedroom accommodation in the local area.

*We offer:*

- \* Experienced Property Managers
- \* Free rental appraisals
- \* Free casual letting service



Ph: Bernie 828 5518

021702777 Email: [rentals@beckettrealstate.co.nz](mailto:rentals@beckettrealstate.co.nz)

## Beckett Real Estate

Licensed Agent REAA 2008

*Sell your property with me...*

Glenys Macdonald

Ph. 021 629066 or 09 8289812

1954 Great North Road, Avondale

## Community Education at its Best CALLING COMMUNITY TUTORS

IF you have something to teach or a school subject like Maths to tutor or IF are interested to be a community tutor in one of many FREE courses given by Universities of international repute under the [www.coursera.org](http://www.coursera.org) banner, please contact:

Francis MBA PhD FRICS at [cons7984@gmail.com](mailto:cons7984@gmail.com) for an initial meeting of minds. You can also contact Francis by text at 021 309 708.