

# The Spider's Web

Delivered free to over 5,200 homes in Avondale and Waterview



June 2015

AVONDALE No. 143

## Whau Local Board Meetings

At the May 2015 meeting of the Whau Local Board, the following were among items discussed.

Whau Councillor's report: Ross Clow

Referred to rates increases for the coming year. Whau area will be among the highest. Cr. Clow did come up with an alternative at Council, taking the onus off residential ratepayers and more onto businesses, but his motion was lost.

### Deputations

West Auckland Enterprise Skills and Training (WEST)

Viv Jones and Jane Gilmour from West Auckland Enterprise Skills and Training (WEST) were in attendance requesting ongoing support from the Whau Local Board to continue meeting the needs of the Whau community.

### Whau Coastal Walkway Trust

Iris Donoghue, Chairman, Whau Coastal Walkway Environmental Trust and Tony Miguel, Trustee, Whau Coastal Walkway Environmental Trust were in attendance to introduce the organisation and Whau Coastal Walkway project to the board.

Flotilla Whau 2015

Kathy Waghorn from Flotilla Whau 2015 were in attendance to present a report on Flotilla Whau 2015 which the Local Board supported with funding.

### Public Forum

Hugh Dickey - Removal of Pine trees at the Terry Street playground, Blockhouse Bay Recreational Reserve

Hugh Dickey was in attendance to speak on the proposed removal of mature pine trees from the Terry Street playground area of the Blockhouse Bay Recreational Reserve. Mr Dickey presented a petition signed by residents in support of retention of the trees. Expressed the heritage nature of stands of pine trees in the context of the area. The pines are estimated as being 60 years old, half their standard lifespan.

Will Ilolahia and Mesepa Edwards- Waiata Artist Trust (Avondale branch)

Has involvement with local schools and residents regarding recycling and crafts projects, and running events both nationally and internationally. Has been involved with organising the annual Pasifika festival. Seeks support for a Pacific festival later this year.

Foucknor Feu'u and Sheryl Kaue - Beyond Fitness

A gymnasium located on Portage Road. Offers free membership to primary, intermediate and secondary school students.

Lisa Fa'afou - Nexfit Community Trust

Operates from Manukau. "Nexfit" stands for "No excuses, family is therapy". Charge \$3 per session and invite family groups to take part. Intends to bring the programme to West Auckland in local community centres.

### Board Member Reports

#### Rates Increases

During the last few months we have been working on long term plan discussions and the Mayor has provided direction on how to improve Auckland's traffic congestion. Since the proposal to introduce motorway tolls, or a regional fuel tax were not supported by central government a transport levy was put up as an alternative which could be immediately applied. It is \$114 for households and \$183 for businesses. The average rates rise is 9.9%. However Whau is well over that at 15.7%, with only two

other boards higher at 16%. The rates rise was decided at the Auckland Council Budget Committee earlier this month.

#### Empowering Communities

This is an initiative by the Auckland Council to employ brokers to work more directly with community groups. The driver for this is a saving \$1.6 million dollars in staffing overheads. This will bring change in how we connect with our communities and the policy development is being worked through.

#### Anzac Day Ceremonies

On April 25th Anzac Day there were several parades in Whau. There was a much larger attendance than in previous years. Celebrating 100 years since the First World War saw many people attending the Cenotaph Dawn Service as well.

#### Toi Te Uku Opening

The Portage Ceramics Trust officially opened their premises at 8 Ambrico Place, New Lynn to the public on Saturday 2nd May. The building houses the Richard Quinn Crown Lynn Pottery collection and is the culmination of a ten year process to house it in one place.

### Auckland Transport Update

Minor safety improvement works - raised speed tables on St Jude Street and Great North Road

As part of Auckland Transport's commitment to improve road safety and reduce the number of deaths and serious injuries on the road network, St Jude Street and Great North Road roundabout was identified as a high risk intersection. There were 58 reported crashes (Injury Accident equal: 1 serious and 9 minor) at the intersection between 2009 and 2013. The majority of crashes were related to vehicles failing to give way on either St Jude Street or Great North Road approaches. It is also noted that four crashes were pedestrian related, with two occurring at the zebra crossing on St Jude Street. Auckland Transport has investigated the intersection and considers it appropriate to install speed tables at the existing zebra crossings on St Jude Street and Great North Road. The objective of the proposal is to slow down the speed of vehicles approaching and/or leaving the roundabout on these roads as well as provide a safer zebra crossing facility for pedestrians.



Published by the Avondale Business Association (Bernie Thomsen)

Phone (09) 820 0648

Fax (09) 820 0649 PO Box 19 730 Avondale

Email: [aba@avondale.net.nz](mailto:aba@avondale.net.nz)

Website: [www.avondale.net.nz](http://www.avondale.net.nz)

Advertise here for as little as \$25 per month.

"Please note: Payment is required once final proof is accepted before printing."

DISCLAIMER: Every effort has been made to ensure the accuracy of information in this newsletter, but the editors and publishers accept no responsibility for any errors or omissions.

## Issue No. 143 THANK YOU TO OUR ADVERTISERS

St Georges Road, St Jude Street & Great North Road, Avondale Roundabout conversion to a signalised intersection

A request was received from the Local Board Transport Lead to look at converting the St Georges Road, St Jude Street and Great North Road Avondale roundabout into a signalised intersection. Auckland Transport's investigation has found that converting this intersection from a roundabout to a signalised intersection will require closing one of the legs, and require significant cost for this upgrade. The cost-benefit analysis of signalising this intersection is not favourable.

Tiverton-Wolverton alternative cycle route – Mulgan St improvements

As part of the Wolverton-Tiverton Alternative Cycle Route, some changes have been proposed for Mulgan Street – at the intersection of Whitney, Mulgan and Margate, and a little further down the road at the intersection of Margate and Mary Dreaver Street.

Renewal of community lease to Avondale Community Pre-School Society

The Board approved the renewal for 5 years, at \$250 per annum.

### Whau Local Board Discretionary Funding 2014-2015, Round Two

Avondale Athletics Club, towards the purchase of two gazebos for the Avondale Athletics Club between October 2015 to March 2016 -- \$2750.00

Church of the Saviour Trust, towards the purchase of craft, stationery and printing of photos

for the Church of the Saviour holiday programme between July 2015 to October 2015, \$1000.00

Encounter Hope Foundation, towards the lease of 50 Rosebank Road, Avondale, for November

2015 and February 2016, \$3083.00

Commicare Civilian Maimed Association (Auckland) Incorporated, towards the venue hire of the Blockhouse Bay Baptist Church and the Avondale Baptist Church May 2015 to June 2016, \$1600.00

The Boys Hut Trust, towards the cost of accommodation and pass tickets for the Mt Ruapehu ski trip between July 2015 to August 2015, \$1500.00

Fix Up, Look Sharp – PARS Incorporated, towards the purchase of stationery, camera, venue hire and vehicle registration for the 'Job Preparation' service between May 2015 to April 2016, \$1570.00

Leautoa Foundation, towards the purchase of sports equipment and storage costs for the 'At Risk Youth Health Sports and Fitness boot-camp' between May 2015 to May 2016, \$3000.00

Chinese New Settlers Services Trust, towards the costs of promotions and venue hire of the New Lynn Community Centre for the Cultural Learning Centre between July 2015 to December 2015, \$1000.00

Glenavon Early Childhood Centre Incorporated, towards the costs of printing booklets, information, certificates and rosettes for the 'Hero's

Role Model' mentoring programme between May 2015 to December 2015, \$1385.00

Bangla School Charitable Trust, towards the rental cost of the Avondale Community Centre,

purchase of stationery and books for the Bangla school between May 2015 to April 2016, \$2056.00

Kelston Community Hub Incorporated, towards the purchase and installation of the website for the Kelston Community Hub between May 2015 to July 2015, \$2860.00

Bhartiya Samaj Charitable Trust, towards venue hire, hall lease, transportation and outing costs for the Elders Support programme between May 2015 to April 2016, \$2000.00

Vaevae-Manave Tongan Community Charitable Trust, towards the purchase of equipment for the Vaevae-Manava strategic education transition development project between

September 2015 to October 2015, \$1300.00

United Samoa Pentecostal Church, Avondale, towards the purchase of music equipment for the youth group between May 2015 to October 2015, \$2499.00

### Third quarter Whau Local Board work programme review

#### The Board:

\* Allocated \$94,334 towards delivery of Greenways projects by Parks-West and \$16,000 to the Whau Great North Road Bridge Gateway project

\* Allocated \$22,468 and \$7,532 (Avondale development programme) to provide a grant to an appropriate provider for Pacific arts events.

\* Allocated \$10,913 towards a range of heritage activities that acknowledge and record the history of the brickworks in New Lynn.

\* Allocated \$12,378 towards esplanade weed removal and planting.

\* Allocated \$10,000 to provide a grant to Whau the People Arts Festival for additional ethnic diversity art activities.

\* Allocated \$1500 for an opening for Crum Park.

\$11,889 to enable the Manukau Harbour Forum's work programme for 2015/2016 to proceed.

Proposed reclassification of 28 Racecourse Parade Reserve and Avondale Central Reserve

The Board approved the reclassification of part of the land (Lot 6 DP 16112) from a recreation reserve to a local purposes (carpark) reserve.



### Avondale Plumbing Services Ltd

#### Jaik Stone

NZ Certifying Craftsman Plumber

M: 021 916089 P: 09 828 4505, E: avondaleplumbingnz@gmail.com

Advertise here for as little as \$25..email: aba@avondale.net.nz

## WHAU RIVER PLANTING

On **Arbor Day, Wednesday 5 June** the planting at **Chalmers Park in Avondale** will be a big event which will run from 9.30am to 2.00pm with a sausage sizzle afterwards. Refreshments will be provided at all other planting events.

Contact Sandra on [Sandra@whauriver.org.nz](mailto:Sandra@whauriver.org.nz) mob. 021 295 0302 or just turn up on the day

Chalmers Park. Avondale	<b>Wednesday 5 June Arbor Day planting</b>	9.30am – 2.00pm	Vehicle parking available on Barrhead Place, via Lansford Crescent in Avondale.
Kurt Brehmer Walkway, Rosebank	Sunday 9 June	10.00am – 12.00pm	West End Rowing Club Car Park, at end of Saunders Place, Rosebank
Rewarewa Esplanade, New Lynn	Saturday 15 June	2.00 - 4.00pm	Entrance to Esplanade from McNaughton Way, off Hugh Brown Drive in New Lynn (next to art bridge)
Sister Rene Shadbolt, Blockhouse Bay	Sunday 30 June	10.00am – 12.00pm	Bottom end of Heaphy St, Blockhouse Bay

## Avondale College Community Facilities

The Avondale College Community Stadium is available for hire:

**Monday - Friday term time** 6:00 pm - 10:00 pm  
**Weekends/School Holidays** All day  
**Bookings taken weekdays** 10:00 am - 6:00 pm

### Sports Facilities available are:

- Two full size Basketball courts (one has seating for up to 1,000 spectators) which can also cater for many other indoor sports e.g. Volleyball, Indoor Soccer
- Two Squash courts
- Tennis courts
- Softball diamond
- Artificial Hockey turf
- Artificial Cricket wicket
- Dance room

Avondale College Community Stadium is a partnership with Auckland City Council.

Please phone or E-mail the Stadium Manager for more information or a quote for your next event or training.

Telephone (09) 828 9885

E-Mail [facilities@avcol.school.nz](mailto:facilities@avcol.school.nz)



## AVONDALE COMMUNITY GARDENERS



### Biodynamic Arts & Nature

"Biodynamics is a human service to the Earth and its creatures." Biodynamic agriculture is not simply concerned with good nutrition or farming practices that cause the least harm to nature. Goethean science, the foundational

principles of Biodynamics, can also deepen our understanding of the current social and ecological crisis, & develop our greater sensitivity towards the nuances and subtleties of our agricultural landscape, farm individuality, Nature, and the movements of our Earth. As per Bruno Follador, Biodynamic growers learn to ask ourselves: How do I develop an inner organ of discernment as I work and co-create with Nature? How do I become aware of the creative forces of growth in Nature? And how do I begin to take responsibility towards these forces of growth? We invite you & your families to join us in introductory Biodynamic Arts & Nature Workshops with Christine Mognie, taking place at the Rosebank Peninsula Hall, and with our Biodynamic Orchard neighbours: on Saturdays 27 June and 25 July, from 11am - 2pm. Please register with Imiph; 828-5854 Koha entry.

W : [www.facebook.com/avondalecommunitygardeners](http://www.facebook.com/avondalecommunitygardeners)

E : [avondalecommunitygardener@gmail.com](mailto:avondalecommunitygardener@gmail.com)

## Avondale Library Happenings

## Auckland Council

Te Kaunihera o Tāmaki Makaurau



Winter is settling in so why not cozy up with some eBooks and hot soup. You can discover our amazing eBooks and eAudiobooks on our website [www.aucklandlibraries.govt.nz](http://www.aucklandlibraries.govt.nz). Just click on the green tab that says Digital Library to get to the links and instructions on how to get you started. Don't forget that we also have a link to Zinio eMagazines. This database holds hundreds of popular eMagazines online. Check it out and have fun in that lovely winter spot by the window that captures the warmth of the sun whilst protecting you from the chill of the winter breeze.

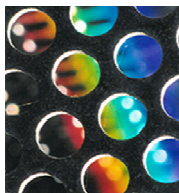


### Reflections from my everyday world: photographs by Fred Mans

1 June - 30 June

This photographic exhibition presented at Avondale Library displays the work of Fred Mans, who has captured unusual images of lights, surfaces, colours and reflections from around Auckland City.

Fred Mans was born in Appalachia, USA, some 60 years ago, but is now a resident of Auckland.



### Park Tales and Pig Tails

Saturday 6 June at Riversdale Reserve  
 Oink along to Riversdale Reserve for a squealingly good time at an Auckland Libraries fun day. Suitable for under 5's and families. A special guest appearance from our favourite big red dog! Interactive story-based activities aimed at developing the language skills of 0-5 years. FREE



### The cat's out of the bag

Thursday 18 June, 2pm - 3pm

Come and hear Max Cryer, one of New Zealand's best-known writers, broadcasters and entertainers, talk about his new book, The cat's out of the bag.

To book your place please phone 09 374 1310.



### Matariki and School holidays

Come along and join our celebrations for Matariki 19 June - 19 July!

Events will include flax weaving, a special evening storytime and rock painting. Visit the library website for more details. [www.aucklandlibraries.govt.nz](http://www.aucklandlibraries.govt.nz)

Chess for success at Avondale

Every Friday, 3.30pm - 5pm

Come along to our weekly chess club to improve your skills and make new friends.

This event is suitable for children and adults of all levels of ability, from beginners to skilled players. All welcome.

Chess boards provided, plus a GIANT chess set is available.

### Learn at Avondale Library

Every Friday, 11am - 12pm

Learn basic computer skills and how to use the digital resources at Avondale Library.

Please contact Avondale Library on 09 374 1310 to book your place.

Need Council information? Don't forget to check out the council stand in the foyer of our library. It is situated opposite our community notice board.

See you at the Library! Check our new facebook page [www.facebook.com/avondalelib](http://www.facebook.com/avondalelib)

### Avondale Library

93 Rosebank Road, Avondale 1026

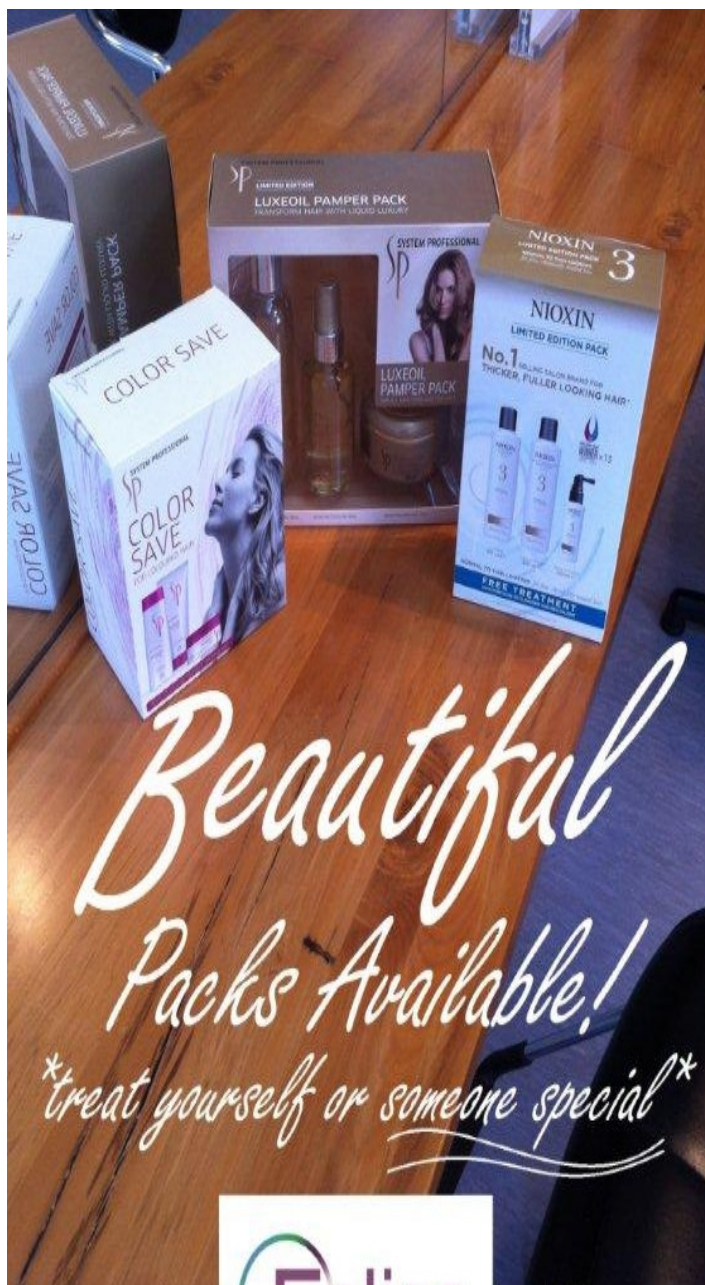
Ph: 374 1310

[www.aucklandlibraries.govt.nz](http://www.aucklandlibraries.govt.nz)

Twitter: [Auckland\\_Libs](https://twitter.com/Auckland_Libs)

Please note the Spider's Web issues will be bi-monthly. The deadline for the next issue is Thursday 30 July 2015 at 12 noon. All enquiries, contact Bernie via email: [aba@avondale.net.nz](mailto:aba@avondale.net.nz)





*Beautiful  
Packs Available!  
\*treat yourself or someone special\**

**6 St Georges  
Road, Avondale**



**Phone  
828 6353**



**Avondale Shoes**

*We specialises in  
"Shoes" and  
shoe repairs.*

**Visit us now! Open Mon to Sunday.**

**1892 Great  
North Road,  
Avondale.  
Ph 828-8904**

## Neelam Superette & Lotto

**The Winning Shop...**

visit us now if you feel lucky and purchase a Lucky Dip Ticket or a Scratchy. For all your grocery convenience plus more.. See the Manager Michael Vaidya or any of his friendly staff at 22 St. Georges Road, Avondale.

**Open 7 days a week (Open up to 8.30pm)**

Advertise in Spider's Web for only \$25.  
Email: aba@avondale.net.nz



1962a Great North Road, Avondale  
Email: avdental@xtra.co.nz, Ph: 09 828 5786; Fax: 09 828 6586  
Website: avondaledental.co.nz

**Hours 8am – 5pm {Monday - Friday}**

### Dr Tim Little (B.D.S. Otago)



Tim has been highly involved in the Auckland Dental Association. He was president for 2 years before handing this position over and, still involves himself by continuing to support the new President and the executive. With Tim's experience he was also called on to help as a Chairman on the peer review committee. Tim is also a foundation member of the New Zealand Academy of Cosmetic Dentistry. He also has a keen interest to continue with further education on implant surgery. Tim's outside interests include spending time with his family and their three teenage children. He is a keen skier and in the summer months windsurfs, cycles and supports his kids with their sailing.

### Dr Victor Young (B.D.S. Otago)



Victor graduated from the University of Otago in 1985 and has been a partner at Avondale Dental since 1990. He is an Auckland Dental Association Welfare Officer, helping his colleagues in times of need. Victor is also a Dental Mentor, helping other dentists with issues in the business and clinical aspects of dentistry. He is a Foundation Member of the New Zealand Academy of Cosmetic Dentistry. He enjoys delivering high quality dentistry with a caring, personal approach to all his patients. Victor loves to relax with a good game of tennis and is a keen skier and golfer. He is married to Liz and they have two teenage children.

### Priya Associate Dentist Dr Priya Singh Reid (B.D.S. Otago)



After graduating from Otago University in 1997, Priya started her dental career in Hamilton before moving to Auckland in 2000. She has been in private practice in Auckland since. Priya is a member of the Auckland Dental Association and the Auckland Academy of Cosmetic Dentistry. She is passionate about providing high quality, long term, reliable and friendly care for her patients. Outside of work Priya loves spending time with her family. She also enjoys staying active and is a keen cook.

### Hygienist Jelena Knezevic (BHSc Oral Health)



Jelena is a dual qualified Dental Hygienist and Therapist. She worked for 5 years as a registered nurse prior to moving to New Zealand in 2001. She has always enjoyed working in an environment where she can help people. She decided to explore a new avenue and qualified at AUT with a Bachelor Degree in Oral Health. Her ambition is to help people in achieving optimal oral health. Outside of work she loves to relax with a good book, and when the need arises to get a bit more active likes to get involved with a bit of DIY.

Avondale Dental is located in Mid-West Auckland and only 10minutes from the CBD. Our objective is to provide high quality dentistry with a personal and caring service. We provide a full range of dental care using the latest technology and dental materials. Our equipment and sterilization procedures are state of the art.

Our motto is that we are, "The Creators of Great Smiles and Healthy Mouths for Life"

#### Our services:

- \* Latest Technology Using Latest Laser, Cad Cam Technology And Abrasion
- \* Crowns And Veneers
- \* Cosmetic Dentistry Restoration Of Broken Teeth And Mouths
- \* Bridges
- \* I V Sedation For Nervous Patients And Nitrous Oxide
- \* Implants - Crowns
- \* Preventative Dentistry
- \* Laser Whitening
- \* Jaw Problems
- \* Oral Surgery
- \* Partial And Full Dentures
- \* Dental Hygiene
- \* Take Home Bleaching

**Contact us now for an appointment or further information.**





**BATTERSBY FUNERAL SERVICES LTD**

Funerals with a Tradition of Caring

Battersby is a family owned funeral service with three generations of history behind it over 80 years. Battersby is a well established and trusted name in funeral services. What Mark and Jennifer provide is more than just formality, it is part of the process of healing and celebrating life.

- \* Available when you need us.
- \* Able to assist with memorial stones, plaques
- \* Chapel reception lounge and viewing hours.
- \* One account to cover all funeral expenses.
- \* Pre arranged and pre paid funerals.

Details: 1855 Great North Road, Avondale: Ph: 09-828-5113  
Email: [battersbyfuneralservices@xtra.co.nz](mailto:battersbyfuneralservices@xtra.co.nz)  
Website: [www.battersbyfuneralservices.co.nz](http://www.battersbyfuneralservices.co.nz)



**COMMUNITY TREE PLANTING**

2pm Sat  
6th June

**Tony Segedin Reserve (end of Canal St)**  
2 - 4.30pm Saturday 2 - 4.30

Avondale Community Action are hosting a tree planting day in association with The Whau River Catchment Trust, this is a child friendly planting spot, they will have 300 natives delivered for families & neighbors to plant & we will have some sweet treats to eat afterwards. Please wear old clothes and covered shoes/gumboots.

Please join us... take a reminder.

Supported by Auckland Council

**Beckett Real Estate**  
Licensed Agent REAA 2008

*Sell your property with me...the only  
Avondale based Real Estate Agent*

*Glenys Macdonald*  
Ph. 021 629066 or 09 8289812, 1954 Great North Road, Avondale

**EXCITING NEWS !!!**  
Watch this space for our Auction Plan  
Coming Soon ....

**YOUR ONE STOP SHOP!**  
**Beckett Real Estate R.E.A.A**

*Family owned business servicing the community for over 50 years!*

**Landlords/Home Owners**  
We urgently require 2-3 bedroom accommodation in the local area.  
We offer:  
\* Experienced Property Managers  
\* Free rental appraisals  
\* Free casual letting service



Ph: Bernie 828 5518  
021702777 Email: [rentals@beckettrealstate.co.nz](mailto:rentals@beckettrealstate.co.nz)

**EcoBiz**  
Free advice for your business



EcoBiz is Auckland Council's new service for small to medium businesses which provides independent advice, tailored to individual needs – at no cost!

Improve your environmental profile and maybe save money too, by getting advice on:

- energy and water use
- waste
- potential pollution impacts

Simply register your interest and we'll arrange a meeting at a time to suit you. You'll get a site visit from an independent expert advisor for up to two hours as well as a report with recommendations and a follow-up phone call. Becoming a smart and efficient business has never been easier.

Register now by emailing [ecobiz@aucklandcouncil.govt.nz](mailto:ecobiz@aucklandcouncil.govt.nz) and make your biz an EcoBiz!

Auckland Council

Find out more: call 09 828 4818 or visit [aucklandcouncil.govt.nz](http://aucklandcouncil.govt.nz)

**AVONDALE CHRISTIAN**  
KIN DER GAR TEN  
63 St Georges Rd, Avondale  
Serving the Community for over 40 years



❖ We provide high quality teaching and care for 2½ to 5 yrs old

❖ We offer 20hrs **FREE** for children over 2½\*, in a stimulating, inviting and multicultural environment

❖ We have a fabulous new outdoor area that stimulates learning.

**\*Limited Time: FREE 20hrs for children 2½ years and over.**

- ✓ A warm, caring, family atmosphere
- ✓ 100% qualified teachers
- ✓ All Day or
- ✓ Sessions: Morning or Afternoon

For more information, contact Ruth on  
• ph 828 3222  
• [www.ackindy.org](http://www.ackindy.org)



**COSMOPOLITAN RETIREMENT VILLAGE**  
17 Geddes Terrace, Avondale



Under new village management 2015 is set to be a big year at the Cosmopolitan Retirement Village .

If it is a small affordable boutique Village that you are looking for then contact me on 828 2885 or email [denise@cosmopolitanvillage.co.nz](mailto:denise@cosmopolitanvillage.co.nz) I would love to show you around this unique retirement village designed for the over 55 year old independent person.

The village is nestled right in the heart of Avondale within walking distance to shops and transport ,with apartments priced from \*\$89,000 why wait any longer . Free up your assets and start living.  
\* on availability \*.

Contact Denise Te Tai, Village Manager, Cosmopolitan Village, Ph. (09) 828 2885 or 021 132 5944.

SPACES AVAILABLE NOW.....

Find us  
and  
like us



Facebook

www.waterviewlaundromat.co.nz

**Waterview  
Laundromat**

35 Daventry St, Waterview

Do your  
laundry and  
surf the  
internet



We have  
**WiFi**

- **Bigger Machines** • great for washing bedding and other large items
- **Cheaper Prices** • self service \$1 & \$2 coin operated

**8 kg WASH from \$2**

**DRYERS - 10 minutes for \$1**



**Open 7 days, 6am - 10pm**

Coin change available at Waterview Superette:  
1481 Great North Rd, Waterview, ph: 09 828 0482





Issue 35 - June 2015

### Burglaries increase when it gets dark



**Lock up**



**Light up**



**Be secure**

**It only takes a minute...**

As we move into the winter season proper (after a short sharp shock in the last weekend of May!) it is timely to remind you of the increased risk darkness brings for us if we don't check our security.

Unfortunately the cover of darkness gives some of our thieves more opportunity to strike misery on their neighbours, but if we can remove the opportunities as best we can, then that significantly reduces the chances of becoming a victim.

It is the same with cars - the entire Auckland region has suffered big increases in vehicle crime this year, but often the opportunities are present for all to see, and thieves only need the one invite and will willingly accept it. So lock your vehicles whenever you are out of them, and please remove anything of value, so you aren't the next victim.

### SUCCESS STORIES...

- ⇒ We have identified and dealt with several young people in relation to the thefts from elderly people in our neighbourhoods. They have all been referred to Youth Aid for action.
- ⇒ Several people in the neighbourhoods have found out they should go to court when they're meant to, otherwise they get to ride with Police!
- ⇒ We have identified and charged several local youths with several thefts from cars in the area, and they are going through the Youth process.
- ⇒ The second Avondale Youth Awards is celebrated in June, recognising some of the great young people we have in our communities (they far outnumber the naughty ones!) for their work and achievements across a wide range of activities. Well done to all award recipients!

<https://www.facebook.com/AvondaleNPT>



### THERE'S NEVER A DULL MOMENT - THAT'S WHAT'S GREAT ABOUT THE NPT ROLE!!!

The variety of work we get involved in is massive, but that is what makes it such a cool job! In the past 6 weeks, we've been involved in Road Safety Week, Youth Week, attended the ANZAC Day service, trained 2 primary school rugby league teams for a tournament, a boys mentoring programme, hosted students on the Gateway careers programme, assisted with a driver's licence programme, visited pre-schools and primary schools, accompanied the Walking School buses, went to a community event in Waterview for Mothers' Day, assisted and presented at a Repeat Impaired Driver programme (The Right Track), investigated and solved several crimes in our NPT area, completed victim intervention plans, offender management plans, high-visibility foot and mobile patrols, engaged in community meetings, assisted our colleagues attending calls for service from family violence incidents to car crashes, written traffic tickets, and been on cordons for a homicide. PHEW!!! And the next two months are looking just as busy and varied, but every day is always different.

### IMPORTANT CONTACTS

**Emergencies - 111**

**Non-emergencies - (09) 571 2800**

**Crimestoppers - 0800 555 111**

**Rosebank/Waterview Neighbourhood Policing Team: (09) 820 5701 (NOT staffed 24/7)**

**Email: Rosebank.Waterview.NPT@police.govt.nz**

**Neighbourhood Safety Panel:**

**info@nsp.co.nz**

**www.nsp.co.nz**



**Duncan Macdonald  
JP**

**Chairman  
Avondale Business  
Association and  
Avondale Community  
Society Inc.**

## the Chairman's Chat

The new Terrace House Development in the middle of town is a fine example of what Avondale will look like in the future, this development falls under the Category of (Mixed use) in other words it has to have Retail at the front and possibly apartments above the Shops and Terrace housing behind.

Multi level apartment blocks up to 5 stories high like the Alto and

Cosmopolitan are planned for the RSA site, St. Jude's site, and the 3-Guys site but probably won't start until the Unitary Plans comes into force, due next year. This type of development has to be very close to the railway station.

More terrace housing is planned for the old suburbs land on Racecourse Parade and other sites within the Main-street boundaries, it's my belief that developers have looked at Avondale and have realized that the price obtainable has gone up so much lately, that redevelopment is profitable, the shape of Avondale will change but it is nothing to be afraid of. We as a small town centre should encourage this type of development. Auckland Council's Urban design team will hopefully ensure these developments of high quality. We don't want another disaster like the Housing New Zealand site.

Willie Tavita & twins (Austin & PJ (Penitiamo Jared) **'THE TAVITA TRIO'** - A local Avondale Father, who is a well known Samoan Entertainer/ Singer for more than 30 years and Twin Boys, (currently attending Avondale College) is showcasing their Melbourne Show, at the Avondale RSA, Layard Street, Avondale on Saturday 6 June 2015. Doors open: 6.30pm. Cover Charge **\$10** (Avondale RSA members with membership Cards **\$5**).

This is the first of many for the Tavita Trio.

**FREE Giveaway** Draws throughout the night. Proudly sponsored by: South Seas Pictures, Gmana Wholesale, Avondale Appliance Centre, Vizezio Bridal Couture (Louis Thomsen). The Show caters for all nationalities.



List & sell with  
**Kathryn & Paul Davie**

All **3 SOLD** by us at Auction in one weekend



If you are thinking of making a Real Estate decision don't sell yourself short, ask us to sell your home for the best outcome

Kathryn M: 021521256 W: 6268113 E: [kdavie.blockhousebay@ljh.co.nz](mailto:kdavie.blockhousebay@ljh.co.nz)

Paul M: 0222448633 W: 6268118 E: [pdavie.blockhousebay@ljh.co.nz](mailto:pdavie.blockhousebay@ljh.co.nz)

Licensed Salespeople REAA 2008 - Austar Realty Ltd | Licensed Agent, REAA 2008 1 Donovan Street, Blockhouse Bay, Auckland

