

The Spider's Web

Delivered free to over 5,200 homes in Avondale and Waterview



March 2014

AVONDALE No. 130

Avondale - Waterview Historical Society

Avondale shorts

Auckland Star, 8 May 1930

A correspondent writes stating that the figures on the semaphore at Avondale showing the dividends are not large enough for some of the patrons of the grandstand to see. The secretary states that this is the first time that he has ever heard of such a complaint. The dividends are displayed on the totalisator house, only a few yards away from the stand, as well as on the semaphore, so that the correspondent should have little difficulty in ascertaining first hand the amount any particular horse paid.

Auckland Star, 20 May 1930

As a motorist was driving in the rain through Avondale citywards, a collie dog suddenly ran in front of the car. The driver called: "Look out! Hold on!" to his passengers, and jammed on his brakes. The passengers braced themselves for the shock, but nothing happened, and a passenger on the back seat, glancing through the rear window, saw the dog get up from a crouching position on the road and trot away to the footpath, the car having passed over him without doing any harm. It is known that dogs

bite the heels of cattle they are driving and drop to the ground to escape the flying kick, but that is only done after training. The question that the passengers in the motor car, who were all farmers or ex-farmers, asked themselves was: "Did the dog purposely crouch on the road when he found what sort of a predicament he was in?"

Auckland Star 2 March 1933 – Letter to the Editor ...

POINTS FROM LETTERS

RAILWAY CROSSING DANGER

Why should an undertaker prefer to lead a long cortege over a dangerous level crossing, when, close at hand, is a fine overhead bridge where the line could be crossed in safety? A few days ago I saw a long funeral cortege passing over the level crossing at Avondale. Before the cars were all across the railway line the wig-wag signal gave notice of an approaching train. The motors thus held up by the signal eventually crossed in safety. Seeing that numerous funerals proceed to Waikumete daily, the route via the Avondale overhead bridge should be compulsory for this class of traffic, in preference to a level crossing with its constant menace. SAFETY FIRST.

Lisa J Truttman (AWHS, Ph. 828-8494 for information)

Support your Local Community, Get behind the Avondale RSA Car Boot Sale

Every Saturday, weather permitting - starts 8 March 2014

\$10 per car boot
space

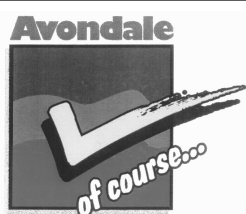
Set-up from 8am

Car boot Sale officially starts from 9am to 12 noon

Book your space now Phone (09) 626 6279

at Car park, behind the Avondale RSA, 7 Layard Street, Avondale

Raffles on sale and some
FREE Giveaways...



Published by the Avondale Business Association

Phone (09) 820 0648

Fax (09) 820 0649 PO Box 19 730 Avondale

Email: aba@avondale.net.nz

Website: www.avondale.net.nz

Advertise here for as little as \$25 per month.

"Please note: Payment is required once final proof is accepted before printing."

DISCLAIMER: Every effort has been made to ensure the accuracy of information in this newsletter, but the editors and publishers accept no responsibility for any errors or omissions.



Duncan Macdonald
JP
Chairman
Avondale Business
Association and
Avondale Community
Society Inc.

the Chairman's Chat

News from around the town...

Our plans for a Park and Ride in the old Wood Yard at the corner of Blockhouse Bay and Rosebank Road has hit a rather large snag. It appears that New Zealand Rails were originally encouraging the plan but have now decided they want the land for themselves to park trains there overnight.

I have suggested 2 other sites to Auckland Transport, which they will have a look at. One is a paper road, that goes between Chalmers Street and St. Judes Street, this could be connected via a walk way to the train station, the only other alternative that I can think of is to remove the berms on Geddes Terrace and put all day ankle parking along there. This will mean that we could re-sign Layard Street as a School drop off point, and maybe a limited time parking after 9am.

The Whau Local Board has only given a luke warm reception to these ideas. It appears they are not convinced there is a parking problem in Avondale.

If you got any other ideas please let me know.

How can we encourage people to come to Avondale, when all our car parks are taken up by people catching trains to the city? Makes me wonder if that's not the alternate plan to kill off the suburbs and make people go to the City.

If we put time restrictions on all our parking spaces, there would be a huge Hue and cry but why shouldn't we? This is our town not a parking building for the City.

If Council are committed to Park & Ride then please, do something, not just talk about it.

STOP SMOKING TOBACCO, IT'S ONLY KILLING YOU..

If you've tried all the batches and the pills, and you are still puffing the disgusting weeds, come and see me and will get you sorted with an Electronic Cigarette (E-SMOKE). They are only a fraction of the price of tobacco and have no carbon monoxide or dioxide or any of the additives that are put in tobacco leaves. And yes, we do have cartridges with a minuet amount of synthetic nicotine to help with the withdrawal symptoms.

Duncan Macdonald,
Avondale Appliance Centre, 1a Crayford Street-West,
Avondale. Ph. (09) 828 2098.

Whau Local Board Meetings

At the 19 February 2014 meeting of the Whau Local Board, Councilor Ross Clow encouraged the Board during his verbal report to be supportive of the Avondale Plan.

Living Wage Aotearoa once again spoke during deputations, and the Board requested that officers investigate opportunities for funding support for the free event to be organised by LWA at the end of May at the Corban Estate in Henderson.

In public forum, Lisa Truttman of the Avondale-Waterview Historical Society presented a submission from the Society to the Board that the following projects be considered by the Board in their future planning:

- Heritage Survey of the Whau Local Board area, along the lines of that completed at Puketapapa.
- Completion of the interpretive sign project at Tait Park.
- Interpretive sign, Saunders Reserve – commemorating the Robertson family
- Interpretive sign or artwork – Corner Eastdale/Rosebank Roads, honouring Chinese market gardeners in Avondale
- Interpretive sign or artwork – Riversdale Reserve, honouring market gardeners in general, with emphasis on the Ministry of Agriculture research station there in the 1950s-1960s and the popularisation of the Owairaka Red kumara.
- Interpretive sign at Arthur Currey Reserve, New Windsor Road. Naming of the Layard Street paper road "James Palmer Reserve," or the application of his name somewhere in the vicinity of Donegal Street/St Judes Anglican Church
- War Memorial recognition for over 200 men who served in WWI from the Whau Local Board area.
- Maintenance of the New Lynn Brickmakers Memorial, Great North Road.

A representative from Project Microcar addressed the Board regarding their aims to solve traffic congestion by the introduction of narrow track electric cars, and that they would be submitting their plan to Council during the Annual Plan process.

Representatives from Sisterhood in Kelston asked for the Board's support in setting up a separate youth zone at Kelston, as they don't feel the Kelston Hub fully caters for the needs of local youth.

Representatives from the Kelston Community Hub presented the Board with a gift of a peace lily as thanks for the \$5000 grant given in 2013 for a shed. They updated the board on activities at the Hub, and that in November they celebrated their first birthday.

The Titirangi Community Arts Council made a written request for \$90,591 funding from the Whau Local Board to support the continued presence of a gallery in New Lynn as its Upstairs Gallery is scheduled to return to Lopdell House in Titirangi in March 2014. However the Board decided that they were unable to assist the Titirangi Community Arts Council with funding to that extent at this time. Board Member Derek Battersby suggested that the Board consider supporting future exhibitions held in the local board area by the TCAC.

\$6,400 further funding was approved for Trees for Babies planting at Harmel Reserve, Glendene.

The Board reallocated \$60,000 from a stream daylighting project at Craigavon Park to construction of a changing room and toilet at Sister Rene Shadbolt Park. The Craigavon Park project will be re-scheduled for next year.


The Board approved a new leases to the Scout Association of New Zealand for part of Brains Park, 20 Albert Road, Kelston; to Block

Deadline for April issue of Spider's Web, Thursday 27 March 2014 at 12 noon. Enquiries phone 09 820 0648.

AVONDALE RSA (Inc)
 7 Layard Street, Avondale, (top of Rosebank Road)
Phone: 828-5000

Enjoy darts, Pool, Indoor Bowls,
 18 Gaming machines, Library,
 3 Big Screens, TAB
 Facilities, Bus Trips, Sky TV.
Live Entertainment
Friday and Saturday nights.

There is always something happening at the Avondale RSA.
New Members Welcome.



BATTERSBY FUNERAL SERVICES LTD

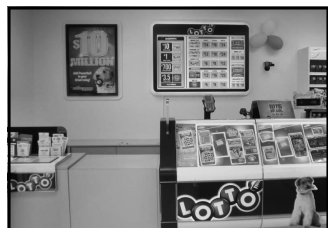
Funerals with a Tradition of Caring

Battersby is a family owned funeral service with three generations of history behind it over 80 years. Battersby is a well established and trusted name in funeral services. What Mark and Jennifer provide is more than just formality, it is part of the process of healing and celebrating life.

- * Available when you need us.
- * Able to assist with memorial stones, plaques
- * Chapel reception lounge and viewing hours.
- * One account to cover all funeral expenses.
- * Pre arranged and pre paid funerals.

Details: 1855 Great North Road, Avondale: Ph: 09-828-5113
 Email: battersbyfuneralservices@xtra.co.nz
 Website: www.battersbyfuneralservices.co.nz

Neelam Superette & Lotto



Open up to 8.30pm

Mon-Sun,
 7-days a week

22 St Georges Rd,
 Avondale

For all your grocery convenience
 and
 purchasing that lucky Lotto Ticket
 or Scratchy, the Manager, Michael
 Vaidya and his friendly staff
 are always ready with a smile to
 assist you.

Come on down and see us.



Avondale Plumbing Services Ltd

Jaik Stone
 NZ Certifying Craftsman Plumber
M: 021 916089 P: 09 828 4505
E: avondaleplumbingnz@gmail.com

Whau Board continued from page 2...

house Bay Bowls Incorporated, located on part of Blockhouse Bay Recreation Reserve, 31-35 Terry Street, Blockhouse Bay; and to West Auckland Association Football and Sports Club Incorporated for part of Brains Park, 35 Vanguard Road, Kelston.

The Board supported a list of a number of heritage sites in the area for consideration for protection under the proposed Auckland Unitary Plan.

Avondale College Community Facilities

The Avondale College Community Stadium is available for hire:

Monday - Friday term time	6:00 pm - 10:00 pm
Weekends/School Holidays	All day
Bookings taken weekdays	10:00 am - 6:00 pm

Sports Facilities available are:

- Two full size Basketball courts (one has seating for up to 1,000 spectators) which can also cater for many other indoor sports e.g. Volleyball, Indoor Soccer
- Two Squash courts
- Tennis courts
- Softball diamond
- Artificial Hockey turf
- Artificial Cricket wicket
- Dance room

Avondale College Community Stadium is a partnership with Auckland City Council.

Please phone or E-mail the Stadium Manager for more information or a quote for your next event or training.

Telephone **(09) 828 9885**

E-Mail **facilities@avcol.school.nz**



6,500 copies of the Spider's Web is printed each month and delivered around Avondale & Waterview.

Advertise your business here now for as little as \$25 + GST.

Beckett Real Estate

Licensed Agent REAA 2008

Sell your property with me...

Glenys Macdonald

Ph. 021 629066 or 09 8289812
 1954 Great North Road, Avondale

YOUR ONE STOP SHOP!

Beckett Real Estate R.E.A.A

Family owned business servicing the community for over 50 years!

Landlords/Home Owners

We urgently require 2-3 bedroom accommodation in the local area.

We offer:

- * Experienced Property Managers
- * Free rental appraisals
- * Free casual letting service

Ph: Rose 828 5518

021702777 Email: rentals@beckettrealstate.co.nz

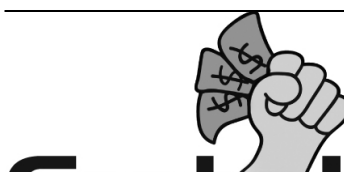


Avondale Shoes

*We specialises in
 "Shoes" and
 shoe repairs.*

Visit us now! Open Mon to Sunday.

**1892 Great North Road,
 Avondale.
 Ph 828-8904**



Grab a Loan.co.nz
simple, affordable, unsecured loans online

Take part in Avondale's survey

Avondale Community Action has a Random Household Survey underway and is looking for people to get involved. You can meet the organizers at the Avondale Library every Friday 9.30am - 11.30am to find out what is involved and sign up to volunteer or contact us at avondalecommunityaction@gmail.com. It's a great opportunity to get to know and be involved with your neighborhood. Training and references will be provided. You can follow us on facebook: [avondale community action](https://www.facebook.com/avondalecommunityaction) or look online at www.avondalecommunityaction.com.

NEW ZEALAND LABOUR PARTY

Notice Annual General Meeting

The Annual General Meeting of the Mt Albert Labour Party Avondale/Waterview Branch, will be held on Sunday 9 March 2014, commencing 4pm at St. Ninians Church, 17-19 St. Georges Road, Avondale. All members and intending members welcome.

Workbridge Job-Placement Service

Workbridge provide a free job placement service to both employers and job seekers under our contract with Government. We are also able to arrange wage subsidy for certain employees if eligible under criteria set by WINZ. If you have contacts amongst other employers. Contact Andrew Kuva on 09 302 2837 or email: andrewk@workbridge.co.nz or visit our website: www.workbridge.co.nz

Teach your community

the skills you have, be it carpentry or culinary,
or how to write poetry or to tell a story.

Become an online e-Teacher and let your community
Study your lesson notes for free.
You can of course provide tuition to your e-Learners for a
small fee.

Park your computer at
www.e-educate.org
or at
www.novels4kids.com
Talk to Francis Lai at
021 309 708

regarding this worthwhile community service.



Talk to Francis Lai
at
021 309 708
regarding this
worthwhile
community
service.

AVONDALE DENTAL

Ph: 09 828 5786 Fax: 09 828 6586

1962a Great North Road, Avondale
Email: avdental@extra.co.nz
Website: avondaledental.co.nz

Hours 8am – 5pm {Monday - Friday}

Dr Tim Little (B.D.S. Otago)



Tim has been highly involved in the Auckland Dental Association. He was president for 2 years before handing this position over and, still involves himself by continuing to support the new President and the executive. With Tim's experience he was also called on to help as a Chairman on the peer review committee. Tim is also a foundation member of the New Zealand Academy of Cosmetic Dentistry. He also has a keen interest to continue with further education on implant surgery. Tim's outside interests include spending time with his family and their three teenage children. He is a keen skier and in the summer months windsurfs, cycles and supports his kids with their sailing.

Dr Victor Young (B.D.S. Otago)



Victor graduated from the University of Otago in 1985 and has been a partner at Avondale Dental since 1990. He is an Auckland Dental Association Welfare Officer, helping his colleagues in times of need. Victor is also a Dental Mentor, helping other dentists with issues in the business and clinical aspects of dentistry. He is a Foundation Member of the New Zealand Academy of Cosmetic Dentistry. He enjoys delivering high quality dentistry with a caring, personal approach to all his patients. Victor loves to relax with a good game of tennis and is a keen skier and golfer. He is married to Liz and they have two teenage children.

Priya Associate Dentist Dr Priya Singh Reid (B.D.S. Otago)



After graduating from Otago University in 1997, Priya started her dental career in Hamilton before moving to Auckland in 2000. She has been in private practice in Auckland since. Priya is a member of the Auckland Dental Association and the Auckland Academy of Cosmetic Dentistry. She is passionate about providing high quality, long term, reliable and friendly care for her patients. Outside of work Priya loves spending time with her family. She also enjoys staying active and is a keen cook.

Hygienist Jelena Knezevic (BHSc Oral Health)



Jelena is a dual qualified Dental Hygienist and Therapist. She worked for 5 years as a registered nurse prior to moving to New Zealand in 2001. She has always enjoyed working in an environment where she can help people. She decided to explore a new avenue and qualified at AUT with a Bachelor Degree in Oral Health. Her ambition is to help people in achieving optimal oral health. Outside of work she loves to relax with a good book, and when the need arises to get a bit more active likes to get involved with a bit of DIY.

Avondale Dental is located in Mid-West Auckland and only 10minutes from the CBD. Our objective is to provide high quality dentistry with a personal and caring service. We provide a full range of dental care using the latest technology and dental materials. Our equipment and sterilization procedures are state of the art.

Our motto is that we are, "The Creators of Great Smiles and Healthy Mouths for Life"

Our services:

- * Latest Technology Using Latest Laser, Cad Cam Technology And Abrasion
- * Crowns And Veneers
- * Cosmetic Dentistry Restoration Of Broken Teeth And Mouths
- * Bridges
- * I V Sedation For Nervous Patients And Nitrous Oxide
- * Implants - Crowns
- * Preventative Dentistry
- * Laser Whitening
- * Jaw Problems
- * Oral Surgery
- * Partial And Full Dentures
- * Dental Hygiene
- * Take Home Bleaching

Contact us now for an appointment or further information.

Avondale Library Happenings



Books made into movies! Come in and select from a range of titles and other formats, DVD's, music scores, audio tapes on our gold carpet display!

Pasifika Celebrations

Auckland Libraries will mark Pasifika celebrations from 17-31 March to work around the timing of other March Pasifika events in Auckland. Avondale Library will have Pasifika themed story-times ideal for ages 3-5years.



- Wednesday 19 March (10.30am). Let's do the Sasa! (Samoan dance) Learn this dance performed by Aoga Amata Early Childhood Centre. Listen to stories and songs.
- Saturday 22 March (11.00am). Let's do the Hula! Come and learn, listen, sing and dance as we celebrate the unique cultures and stories of the South Pacific.
- Wednesday 26 March (10.30am). Be Surprised! Who is our special Pasifika guest? Come and find out and join in with stories, song and dance.

English as a second Language materials: We have IELTS and TOEFL resources, Grammar, the in's and outs of Prepositions or learning English conversation. Come and speak to a Librarian and they can assist you with your choice of beginners to advanced level material. Novels with CD's are also a fun way to learn.

CV updates, job searching, emailing, remember we have WIFI for laptops and computers available for booking. All free!

Other things to check out:

Avondale Library would like to highlight the Avondale Citizens Advice Bureau services that are available next door in the

AVONDALE COMMUNITY GARDENERS



Therapeutic Community

A community environment within communal spaces that promote a sense of commonality & collective activities, is what we're expecting this year, as Avondale Community Gardeners continues working alongside neighbours in the Growing Communities initiative. Please join us, in our 9 monthly workshops of our 2014 Series dedicated to "Therapeutic Gardens & community." Well known community members, like Justin Newcombe, provide us all with useful tips on Gardener topics covering ; Sustainable Landscape Designs for Home gardeners – together with Home gardener Toolkit advice. Michelle deLacy & Lis Alington then follow with Herbal & Biodynamic Plant education. And we're privileged again with Dieter Proebst, & Christine Moginie, to learn more about Biodynamic observation & the Biodynamic Management model for community orchards & our co-operative home gardens. Request your copy of our 2014 Series Programme Poster by phoning Imi, 828-5854

W: www.facebook.com/avondalecommunitygardeners

E: avondalecommunitygardener@gmail.com

Saturday 8 March at the Rosebank Peninsula Hall
JUSTIN NEWCOMBE : "Sustainable Landscape Designs for Home gardeners" : 11am – 2pm, \$5 entry, b.y.o. lunch / share ...

small buildings by the car-park behind the library. Their open hours are Monday to Friday 9:30am-1:00pm. JP services are available Mondays, Wednesdays, Thursdays & Fridays only, 10:00am-12:00noon. Saturday Legal Clinic – appointment necessary. Budgeting help available (fortnightly) Tuesdays 10:00am-12:00noon. Please check with the CAB first for dates. You can contact the Avondale CAB at 8287121

Chess for Success

Every Friday, 3:30pm - 5pm
 Come along to Avondale Library for our weekly chess club to improve your skills and make new friends and share your skills with others. This event is suitable for all levels of ability from beginners to skilled players. Ages 7 and up. All welcome!. Chess boards provided, plus a GIANT chess set is available.



See you at the Library!

Avondale Library
 93 Rosbank Road, Avondale 1026
 Ph: 374 1310
www.aucklandlibraries.govt.nz
 Twitter: Auckland_Libs

Avondale Community Centre, 99 Rosebank Road, Avondale

What's coming up at the Community Centre?

- **NEIGHBOUR'S DAY** – fun-filled workshops in various Centres: LIMITED SPACES – BOOKING ESSENTIAL
 Come along with your preschooler to make and decorate a cookie to gift to your neighbour on "Neighbours Day" 29-30 March 2014

@ AVONDALE COMMUNITY CENTRE – 99 Rosebank Road, Avondale
 Friday 28 March from 9.30am to 11.30am

@ NEW LYNN COMMUNITY CENTRE – 45 Totara Ave, New Lynn
 Tuesday 25 March from 9.30am to 11.30am

@ CERAMCO PARK FUNCTION CENTRE – 120 Glendale Rd, Glen Eden
 Tuesday 18 March from 9.30am to 11.30am

BOOKING ESSENTIAL – Phone 09 301 01 01 extn 428423 or email: community.wellbeingadmin@aucklandcouncil.govt.nz

- **WALK IT URBAN** – Meets every Thursday at 6.30pm at the Avondale Community Centre.
 Weekly walks will be a 45-60 minutes moderate walk suitable for all abilities. What to bring? Suitable clothing & footwear and a water bottle. Only \$1 per person each week.
 For more information contact Ngaire, phone 8204926
- **DIABETIC SUPPORT GROUP** – on the 1st Monday of the months
 Next meetings: 03/03 and 07/04. For more info phone 827 8315.

Deadline for the April 2014, issue of Spider's Web is 12 noon on Thursday 27 March 2014. All enquiries contact Bernie on 09 820 0648 or 021 0613080.

Find us
and
like us



on



Facebook

www.waterviewlaundromat.co.nz

**Waterview
Laundromat**

35 Davenport St, Waterview

Do your
laundry and
surf the
internet



We have
WiFi

- **Bigger Machines** • great for washing bedding and other large items
- **Cheaper Prices** • self service \$1 & \$2 coin operated



Open 7 days, 6am - 10pm

Coin change available at Waterview Superette:

1481 Great North Rd, Waterview, ph: 09 828 0482

email: waterviewsuperette@xtra.co.nz



Issue 22 - March 2014

MAD MARCH IS HERE!!!

With all the universities starting in the first week of March, there will be a significant increase in traffic during the peak hours (which seem to get longer every year as well!). Plan your trips and allow extra time. We see an increase in crashes during March - be careful out there.

The other increases we see is in burglary and car crime. This is in part due to the hot and humid weather experienced in March, and people leaving windows and doors open to provide relief from the conditions. Unfortunately this provides opportunity for thieves, and easy access to ply their trade.



SPEED RESTRICTIONS IN WATERVIEW

Many of you will have been aware of the significant change in the road layout on Great North Road in Waterview, to allow for major works to be done.

The fully engineered road design is narrower and the bends are sharp, and it is unsafe to negotiate this diversion at more than the 30 KPH temporary speed limit.

Both the NPT and Road Policing staff will be paying attention to this stretch of road over the coming weeks, and will enforce the speed limit wherever possible.

Residents and commuters have expressed concern at some of the driving behaviour displayed and there have been several near misses caused by drivers not staying in their lanes because they are driving too fast.

Let's all show some patience, and adherence to the speed limit, so we all get to our destination unscathed.



SAFER COMMUNITIES - TOGETHER

Our Community Patrol needs YOU!!!



The patrol has been going for a couple of months now, and are adding value to the crime prevention and visibility in the community. There are spaces on the roster, so get active and become part of this worthwhile group.



We have passed 300 'likes' and well on the way to our next 'milestone', in social media speak. Thanks for the feedback and support so far, and your contributions. We've had some successes from information we have posted from the community about suspicious people and burglaries, so it definitely has its place as an information tool between Police and the community, just like this newsletter.

We will continue to post regular updates on what we are doing, issue we become aware of, and general prevention advice. Look up our page - Avondale Neighbourhood Policing Team - and 'like' it so you can get notifications too, and keep up with what's happening.

IMPORTANT CONTACTS

Emergencies - 111

Non-emergencies - (09) 571 2800

Crimestoppers - 0800 555 111

Rosebank/Waterview Neighbourhood Policing Team: (09) 820 5701 or 0275 822 363 (NOT staffed 24/7)

Email: Rosebank.Waterview.NPT@police.govt.nz

Neighbourhood Safety Panels:

rosebanknsp@gmail.com

waterviewnsp@gmail.com

Just for a Laugh!



Why do the others do it..

Two Irishmen were sitting in a pub watching the Tour de France on TV.

Seamus shook his head and asked, "Whoi t'e hell do they do Dat?"

"Do what?" asked Mick.

"Go on them boikes for moiles and moiles, up and down t'e hills, round t'e bends. Day after day, week after week. No matter if it's oicy, rainin', snowin', hailin' why would they torture themselves like Dat?"

"Tis all for the prestige and the money," replied Mick, "You know the winner gets about a half a million Euros".

"Yeah, I understand Dat." said Seamus, "But why do all the others do it?"

"Lexophile" is a word used to describe those who love using words in rather unique ways,

When fish are in schools, they sometimes take debate.

A thief who stole a calendar got twelve months.

When the smog lifts in Los Angeles U.C.L.A.

The batteries were given out free of charge.

A dentist and a manicurist married. They fought tooth and nail.

A will is a dead giveaway.

With her marriage, she got a new name and a dress.

A boiled egg is hard to beat.

When you've seen one shopping Center you've seen a mall.

Police were called to a day care Center where a three-year-old was resisting a rest.

Did you hear about the fellow whose whole left side was cut off? He's all right now.

A bicycle can't stand alone; it is too tired.

When a clock is hungry it goes back four seconds.

The guy who fell onto an upholstery machine is now fully recovered.

He had a photographic memory which was never developed.

SKULLDUGGELY

I am the man from Ballarat who smelled, a rat.
When I left Ballarat, with only my hat,
and the Clothes on my back, minus my pack.

Don't look back said my mate, from Snowy River.
Because human nature, is a bugger of a thing,
when it comes to that.

They all cried fowl and tried to put you down,
But you're better than that,
said my mate from Snowy River.

As we sit beside the fire, with the paperbark trees
And the kookaburra's in the jacaranda trees.
With its purple brilliants, behind our backs, and
The billy boiling.
Flicking ashes this way and that.

They were the greatest of days, when we saddled
Up and rode the tracks.
Across the Blue Mountains and back.
By God we didn't need to look back as,
we knew better than that.

The memoir's will never fade with time.
And like they say a Victoria Bitter,
will go down well with many a solid mate.

By Corale Magnus, 0223 145051



ONLY \$1 PER WEEK!

HIPPY
NEW ZEALAND

Home Interaction Programme for Parent and Youngsters

Help prepare your child for school

HIPPY IS AN EDUCATIONAL PROGRAMME FOR PRE-SCHOOL CHILDREN, PREPARING THEM FOR A SUCCESSFUL START TO SCHOOL.

CALL OR COME IN & ENROL YOUR CHILD TODAY FOR 2014!

HIPPY
Educating children
Empowering families
Engaging Communities

Based in Rosebank School
Avondale

HIPPY Coordinator: Elisa Niovara
217 Rosebank Road, Avondale
PH: 828-6319 MB: 022 3507748
Email: hippy@rosebank.school.nz

Criteria applies

When she saw her first strands of gray hair she thought she'd dye. Acupuncture is a jab well done. That's the point of it.

And the cream of the wretched crop:

Those who get too big for their pants will be exposed in the end.