

The Spider's Web

Delivered free to over 5,200 homes in Avondale and Waterview

November 2014



AVONDALE No. 138

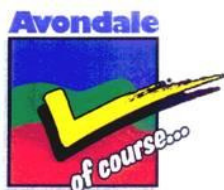
Live Entertainment & Free Giveaways
by Santa Claus....

FREE family event

AVONDALE CAROLS BY SPIDER LIGHT

Sunday 7 December
Avondale Town Square
6.00 - 8.00pm

www.aucklandcouncil.govt.nz/events



Don't miss out on this FREE Event. Come celebrate the spirit of Christmas with us. If you wish to sing a song, contact Bernie on (09) 820 0648 /0210613080 or email: aba@avondale.net.nz

JUST FOR A LAUGH...

A true story from the pages of the Manchester Evening Times Last Wednesday a passenger in a taxi heading for Salford station leaned over to ask the driver a question and gently tapped him on the shoulder to get his attention.

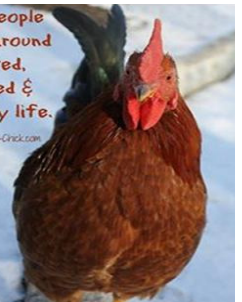
The driver screamed, lost control of the cab, nearly hit a bus, drove up over the curb and stopped just inches from a large plate window.

For a few moments everything was silent in the cab. Then, the shaking driver said "are you OK? I'm so sorry, but you scared the daylights out of me." The badly shaken passenger apologized to the driver and said, "I didn't realize that a mere tap on the shoulder would startle someone so badly."

The driver replied, "No, no, I'm the one who is sorry, it's entirely my fault. Today is my very first day driving a cab. I've been driving a hearse for 25 years..

Too many people are walking around unmedicated, unsupervised & affecting my life.

@The-Chicken-Click.com



Avondale



Published by the Avondale Business Association (Bernie Thomsen)
Phone (09) 820 0648 Fax (09) 820 0649 PO Box 19 730 Avondale
Email: aba@avondale.net.nz Website: www.avondale.net.nz

Advertise here for as little as \$25 per month.

"Please note: Payment is required once final proof is accepted before printing."

DISCLAIMER: Every effort has been made to ensure the accuracy of information in this newsletter, but the editors and publishers accept no responsibility for any errors or omissions.

Whau Local Board Meetings

The following were amongst the items discussed at the October meeting of the Whau Local Board at New Lynn, 15 October 2014.

Ward Councillor's Report

Councillor Ross Clow referred to a trend of NZ Herald criticising the Governing Body of Auckland Council and their actions and decisions. The 2.5% target for rate rise this year is causing major repercussions and deferral of projects across the city. Cr. Clow still hopeful for completion of the brownfields development in New Lynn. There is no money in the Long Term Plan for Avondale Centre redevelopment.

Public Forum

Michael Brennan – spoke regarding “rubber stamping” of Council officer reports by local boards and the governing body of the Council. Suggested to the Board members they should be proactive.

Avondale Town Centre

The Avondale Town Centre regeneration and rebuild is not yet funded in the long term plan and we are working with our Councillor, Ross Clow, to highlight to the Governing Body how important it is to get funding. At our last public meeting in Avondale, we heard too from you, how we have all waited so long for Avondale to move ahead. You can support us by making submissions to the long term plan which opens for consultation in January next year.

Auckland Transport report

Continuing issue of Park & Ride facilities at Avondale Kiwi Rail has now made the land adjacent to the rail line on the corner of Blockhouse Bay Road and Rosebank Road available for lease. It was noted that AT would be conducting a parking study in the area in the next three months.

An additional resolution, “That the Whau Local Board call for an urgent report on options for supporting the development of a Park and Ride facility in Avondale including options for utilisation of the Auckland Transport Local Board Capital fund and taking into account updated timing projections and costings of the cycle bridge project,” proposed by Board Member Derek Battersby, lapsed for want of a seconder.

Board member Battersby voted against the resolutions that were passed by the Board. He explained after the meeting: “The previous Board [was] committed to park and ride in Avondale. At the time the Board believed that the rail land [near corner Layard Street and Rosebank Road] was the correct place. AT also had plans to develop a small bus transfer station on the same site. Some basic drawings were provided. The important requirement was for Kiwi Rail to indicate if the land was surplus. After some time they indicated they may wish to retain the land for a future train storage yard. Along the way AT reviewed its position and decided they did not need the rail land for their transfer station. No further work was undertaken. Then the “For Lease” signs appeared. The board has requested further information as per the resolutions. [Board Member] Duncan Macdonald [not [present at the October 2014 local board meeting] wanted to secure some funding hence the additional resolution. It was always agreed that if the rail land was not available other land could be found.”

New Lynn to Waterview shared path project

The Board approved the cost estimate of \$2 million to construct an 80m bridge that is 3.5m wide and separated from the Whau River rail bridge (near Olympic Park), as part of the New Lynn to Waterview shared path. Construction funding for the bridge is to come from the Local Board Transport Fund, for years 2012-2013, 2013-2014, 2014-2015 and part of the 2015-2016 funding.

Whau Local Board Community Group Funding 2014-2015 – Round 1

The Board agreed to the following allocation:

Auckland Regional Migrant Services Charitable Trust, for venue hire of the Lynfield Recreation and Youth Centre for the Safari Cultural Playgroup between January 2015 to June 2015: \$1000

Avondale Athletics Club, towards the purchase of new throwing equipment, track equipment and marketing flags and badges between November 2014 to April 2015: \$1998

Chinese New Settlers Services Trust, towards first aid training and the salary of the dancing tutors and coordination for the Chinese New Settlers Services Trust Cultural Learning Centre New Lynn branch, and the purchase of four mobile whiteboards, four laptops a data projector and screen, promotion, teaching textbooks and visual resources and administration costs for the Education Programme at New Lynn Community Centre between November 2014 to June 2015: \$2300

Dayspring Trust, towards the clinical supervision cost for the Secure Beginnings programme between January 2015 to May 2015: \$3500

Encounter Hope Foundation, towards the lease of 50 Rosebank Road, Avondale between November 2014 to October 2015: \$3500

Generation Ignite, towards the purchase of outdoor bean bags, trestle tables, sports equipment, catering for the launch of Generation Ignite, catering for the Women's Refuge Breakfast, Food for the youth camping trip, and Christmas presents for youth at the Women's Refuge for the launch of Generation Ignite at the New Lynn Community Centre between December 2014 to January 2015: \$250

Glendene Playcentre, towards the purchase and installation of a UV filter, outdoor power point, pump and tank and materials for the Glendene Play Centre between November 2014 to January 2015: \$1000

Royal New Zealand Coastguard Boating Education Limited, towards the purchase of life jackets, inflatable training boat, grab bag, throw ropes, certificates, bailer, fog horn, dummy flares, teaching aid kit and instructor training for the Safe Boating programme run at Dean Greenwood Swim School in New Windsor Primary between November 2014 to November 2015: \$2803

The Diocese of Auckland - Church of the Saviour, towards the purchase of equipment and resources from SPACE Trust NZ for the Support Parents Alongside Children's Education programme between February 2015 to November 2015: \$1500

The Parenting Place Incorporated, towards subsidies, course handbooks and volunteers expenses for the Toolbox Parenting programme between November 2014 to October 2015: \$700

West Auckland Community Toy Library, towards the electricity, telephone and alarm monitoring costs for the West Auckland Toy Library between November 2014 to October 2015: \$1400.

Avondale Christian kindergarten, 63 St Georges Road,

is offering up to 30hrs free for a limited time.

We have provided quality care and education for

pre-school children for 40 yrs.

We have: multi-cultural staff, great reputation,

fabulous preparation for school, stimulating indoor and outdoor area.

Call Ruth on (09) 828 3222.



the Chairman's Chat

CHAIRMAN'S ANNUAL REPORT 2014



Duncan Macdonald
JP
Chairman
Avondale Business
Association and
Avondale Community
Society Inc.

FUTURE PLANS FOR AVONDALE

Future plans for Avondale was sorted out at a 3-day workshop, which I attended. Result of that is in the Avondale Advance in your folders. (Last year's Report).

In my opinion those plans will be filed with the last two Avondale plans, especially as Len Brown has soaked up all the money for his train set.

SWIMMING POOL ETC UPDATE

Thanks to the Labour Party led Whau Local Board and it's councillor the plans for a public swimming pool and Recreation Centre for Avondale were moved to New Lynn where Redpaths are.

The million dollars granted to The Avondale Primary pool was also lost. We are treading water on this subject which is next to drowning in broken promises.

It also looks like the Community Centre will close years before another one will be built. It's my bet that when it closes you will be told to go to New Lynn Community Centre.

The option of turning the land on the corner of Rosebank and Blockhouse Bay Roads into a Park & Ride looks doomed. The land is available for lease but the Whau Local Board redirected AT Funds that had been earmarked by the previous Board for Car Park & Ride to a Cycleway Bridge in New Lynn.

THE 3-GUYS SITE

The owners failed to reach an agreement with council over a small amount of carpark shortages, council were inflexible but wanted part of the owners land for open space, the owners are now going to wait till the unitary plan to come into effect and will try again. This is the second time Council planners have stuffed up negotiations.

The lack of progress on this site is what has slowed development in Avondale and in my opinion it's not the fault of the owner.

GRAFFITI

The Tag Out Trust, headed by Derek Battersby is now the Service Provider, so far is ok, they are pretty on to it. ABA helps out where they can especially with the Murals been tagged. Report anything to Bernie who will pass it on.

SHOP FRONTAGE

It's noticeable that some shop owners don't clean the front of their shops. This attracts taggers and they finger tag in the dust and is hard to remove. ABA will lobby to get building owners to repaint and clean the front of their shops as this is an ongoing problem. On the plus side, there are some landlords who have revitalised their front shops and we thank them for their efforts.

VERANDAS

We have abandoned all plans to fund fascia signages but we will be continuing with the under veranda swinging signs. Please let Bernie know if you would like one of these.

THE SPIDER'S WEB

Your committee felt that we needed a vehicle for our members to advertise our goods and services to the community, so the Spider's Web now goes out to homes and can still be picked up in the shops. Advertising nearly pays for the increased costs and I believe it has been well received by everyone as it informs the locals as to what is happening in our community and fills a void that the Western Leader does not accommo-

date for. We need our Retailers support for advertising to help cover the costs. The Strategic Plan, part of that was to revamp the Spider's Web and look at ways to bring in extra revenues. As time goes by, it is my opinion that paper copies will go the way of the dinosaur. I believe the ABA should look at expanding our data base and sending the Spider's Web out electronically. This will save us many thousands of dollars a year. We will still print out some hard copies to put in the doctors surgery and Library etc.

PROMOTIONS

This year we had three Business promotions:

- Dale's Birthday Party
Dale's Birthday attracts a lot of children from local schools and their parents. We celebrated Dale's 12th Birthday this year and it was a huge success.
- o Easter Bunny – Again a hit with the children
- o Melbourne Cup – Nearly all the businesses supported our Sweepstakes each year.

♪ Carol's by Spiderlight is coming up on Sunday 07 December 2014 in the Town Square. Each year the Carol's expanding, last year we had a good turnout of more than 1,500 people (families with children) it also attracts groups, church groups and people from all over Auckland, travelling just to enjoy this at our Town Square because of group performances and also our live Band. Open to everyone and their families and it's a FREE EVENT!

BUSINESS AFTER 5

Great initiative for Mainstreet business owners to get together and network. If you are interested in holding one in your shop, contact Bernie on 0210613080 or email: aba@avondale.net.nz

GARDEN

To save money, it looks as though Council may abandon up-keeping some of the gardens around the Town Centre. We will keep on doing what we can to clean and make the gardens presentable. The ABA will still maintain the garden as its part of beautifying our Mainstreet.

MAINSTREET UNDER VERANDA LIGHTS / SECURITY

This project is complete but vandalism was not covered with contractors. People vandalising the lights seems to be ongoing with lower verandas. ABA continues to supply and change light bulbs for all these blocks with the new eco friendly bulbs.

WEBSITE

Website needs modernising and is in working progress... Spider's Web is on the website as well.
ABA IS ON FACE BOOK....'Avondale Assoc Bid', Spider Web already uploaded there plus the Avondale Advance newsletter etc.

St. Ninians Hall, 17 St Georges Road

How many low lifes do we have around Avondale? How low can you go...to actually go into St. Ninians grounds and dig up the Standard Rose bushes and steal them. If you know of anyone stealing Roses from St. Ninians please contact Bernie on (09) 820 0648 or 021 0613080

Duncan Macdonald
Chairman

Avondale College Community Facilities

The Avondale College Community Stadium is available for hire:

Monday - Friday term time 6:00 pm - 10:00 pm
Weekends/School Holidays All day
Bookings taken weekdays 10:00 am - 6:00 pm

Sports Facilities available are:

- Two full size Basketball courts (one has seating for up to 1,000 spectators) which can also cater for many other indoor sports e.g. Volleyball, Indoor Soccer
- Two Squash courts
- Tennis courts
- Softball diamond
- Artificial Hockey turf
- Artificial Cricket wicket
- Dance room

Avondale College Community Stadium is a partnership with Auckland City Council.

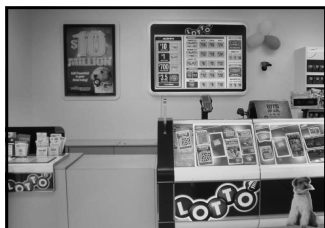
Please phone or E-mail the Stadium Manager for more information or a quote for your next event or training.

Telephone (09) 828 9885

E-Mail facilities@avcol.school.nz



Neelam Superette & Lotto



Open up to 8.30pm

Mon-Sun,
7-days a week

22 St Georges Rd,
Avondale

For all your grocery convenience and purchasing that lucky Lotto Ticket or Scratchy, the Manager, Michael Vaidya and his friendly staff are always ready with a smile to assist you.

Come on down and see us.



Funerals with a Tradition of Caring

Battersby is a family owned funeral service with three generations of history behind it over 80 years. Battersby is a well established and trusted name in funeral services. What Mark and Jennifer provide is more than just formality, it is part of the process of healing and celebrating life.

- * Available when you need us.
- * Able to assist with memorial stones, plaques
- * Chapel reception lounge and viewing hours.
- * One account to cover all funeral expenses.
- * Pre arranged and pre paid funerals.

Details: 1855 Great North Road, Avondale: Ph: 09-828-5113
 Email: battersbyfuneralservices@xtra.co.nz
 Website: www.battersbyfuneralservices.co.nz

AVONDALE DENTAL

Ph: 09 828 5786 Fax: 09 828 6586

1962a Great North Road, Avondale
 Email: avdental@xtra.co.nz
 Website: avondaledental.co.nz

Hours 8am – 5pm {Monday - Friday}

Dr Tim Little (B.D.S. Otago)



Tim has been highly involved in the Auckland Dental Association. He was president for 2 years before handing this position over and, still involves himself by continuing to support the new President and the executive. With Tim's experience he was also called on to help as a Chairman on the peer review committee. Tim is also a foundation member of the New Zealand Academy of Cosmetic Dentistry. He also has a keen interest to continue with further education on implant surgery. Tim's outside interests include spending time with his family and their three teenage children. He is a keen skier and in the summer months windsurfs, cycles and supports his kids with their sailing.

Dr Victor Young (B.D.S. Otago)



Victor graduated from the University of Otago in 1985 and has been a partner at Avondale Dental since 1990. He is an Auckland Dental Association Welfare Officer, helping his colleagues in times of need. Victor is also a Dental Mentor, helping other dentists with issues in the business and clinical aspects of dentistry. He is a Foundation Member of the New Zealand Academy of Cosmetic Dentistry. He enjoys delivering high quality dentistry with a caring, personal approach to all his patients. Victor loves to relax with a good game of tennis and is a keen skier and golfer. He is married to Liz and they have two teenage children.

Priya Associate Dentist Dr Priya Singh Reid (B.D.S. Otago)



After graduating from Otago University in 1997, Priya started her dental career in Hamilton before moving to Auckland in 2000. She has been in private practice in Auckland since. Priya is a member of the Auckland Dental Association and the Auckland Academy of Cosmetic Dentistry. She is passionate about providing high quality, long term, reliable and friendly care for her patients. Outside of work Priya loves spending time with her family. She also enjoys staying active and is a keen cook.

Hygienist Jelena Knezevic (BHS Oral Health)



Jelena is a dual qualified Dental Hygienist and Therapist. She worked for 5 years as a registered nurse prior to moving to New Zealand in 2001. She has always enjoyed working in an environment where she can help people. She decided to explore a new avenue and qualified at AUT with a Bachelor Degree in Oral Health. Her ambition is to help people in achieving optimal oral health. Outside of work she loves to relax with a good book, and when the need arises to get a bit more active likes to get involved with a bit of DIY.

Avondale Dental is located in Mid-West Auckland and only 10minutes from the CBD. Our objective is to provide high quality dentistry with a personal and caring service. We provide a full range of dental care using the latest technology and dental materials. Our equipment and sterilization procedures are state of the art.

Our motto is that we are, "The Creators of Great Smiles and Healthy Mouths for Life"

Our services:

- * Latest Technology Using Latest Laser, Cad Cam Technology And Abrasion
- * Crowns And Veneers
- * Cosmetic Dentistry Restoration Of Broken Teeth And Mouths
- * Bridges
- * I V Sedation For Nervous Patients And Nitrous Oxide
- * Implants - Crowns
- * Preventative Dentistry
- * Laser Whitening
- * Jaw Problems
- * Oral Surgery
- * Partial And Full Dentures
- * Dental Hygiene
- * Take Home Bleaching

Contact us now for an appointment or further information.



Avondale Shoes

We specialises in
"Shoes" and
shoe repairs.

Visit us now! Open Mon to Sunday.

1892 Great
North Road,
Avondale.
Ph 828-8904



Milestones TROPHIES & ENGRAVING

Specialists in
Trophies Engraving Shields Laser Work
Badges Personalised Gifts Sublimation

1784 Great North Road Avondale
P: 5500230 M: 0226711656

DINNERTIME!

Are you hungry or
lonely or just like eating with others?

Well, Avondale Baptist Church invites you to join us for a delicious dinner at The Intersection Lounge - cnr Blockhouse Bay & New North Rds,
Avondale on the first Sunday of each month.
Bookings are essential so phone the Church Office on 828 0182 on the Thursday beforehand.
All welcome.

Avondale Library Happenings

Auckland Council
Te Kaunihera o Tāmaki Makaurau



Our Diwali celebrations and the Whau Arts Festival were the highlights for October. We had such good response from this creative community in events and activities and the people who joined in! Do check out the photoboards in the library and our facebook page! www.facebook.com/avondalelib.

Come and view:

• Watercolour display by ShobaRajit Singh November 3-16

Starting off with water colours as a hobby to bring colour and life to their own home, Shoba's paintings draw inspiration from books in the library, from greeting cards and photographs.

• The Whau Catchment Trust will present a small display of photographs and posters

Join us for digital device sessions:

• iPad with Joyce

Tuesdays 11,18,25 November 2pm-3pm

Bring in your iPad device and let's share and learn together to get the best out of your device. These sessions are suitable for beginners and it's free. For bookings and enquiries please phone: 09 374-1310.

Computer game-making hangout

• Every Saturday 2pm - 3.45pm

Have you ever wanted to make your own computer game? It's easy! We'll show you how with gamefroot, an online game-making tool.

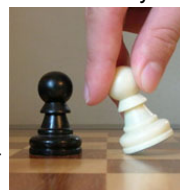
Bring a laptop or use one of our computers. Experienced game makers also welcome to bring your own tools and expertise. Recommended for ages 8+.

Bookings required for our computers; please call the library to book.

Learn at the Library:

• Chess for success at Avondale Every Friday, 3.30pm - 5pm

Come along to our weekly chess club to improve your skills and make new friends. Chess is the hot game at the moment - it's fun, educational and will improve your problem-solving and tactical skills. Learn to play and share your skills with others.



Kathryn & Paul Davie Your local area specialists

Kathryn & Paul Davie
021 521256
022 2448633
DDI 6268113
A/h 828 9265
Kdovie.blockhousebay@ljh.co.nz
pdavie.blockhousebay@ljh.co.nz

Austar Realty Ltd. Licensed Agent REAA 2008

LJ Hooker

This event is suitable for children of all levels of ability from beginners to skilled players. Ages 7 and up. All welcome. Chess boards provided, plus a GIANT chess set is available.

• Book a Librarian!

Every Friday, 11am - 12pm

Learn basic computer skills and how to use the digital resources at Avondale Library. Organise a time to speak one on one to a librarian by contacting Avondale Library on 09 374 1310 to book your place. This event does not take place during school holidays.



• Need Council information? Don't forget to check out the council stand in the foyer of our library. It is situated opposite our community notice board. You can also look on the council website www.aucklandcouncil.govt.nz

See you at the Library! Check our new facebook page www.facebook.com/avondalelib

Avondale Library
93 Rosebank Road, Avondale 1026
Ph: 374 1310
www.aucklandlibraries.govt.nz
Twitter: Auckland_Libs

Whau Local Board Avondale Auckland Council update meeting

Whau Local Board invites you to attend a meeting about current projects in Avondale including Auckland Council's budget proposals for Avondale.

Come and hear what's happening. All are welcome.

Where: Avondale Primary School Hall
Crayford Street-West
Avondale

When: Thursday 27 November 2014, 7.30pm -9pm

Find out more:

email: whaulocalboard@aucklandcouncil.govt.nz
or call 09 826 5191 or visit www.facebook.com/whaulB

Find us
and
like us



on



Facebook

www.waterviewlaundromat.co.nz

**Waterview
Laundromat**

35 Daventry St, Waterview

Do your
laundry and
surf the
internet



We have
WiFi

HAPPY HOLIDAYS!

The holidays
have arrived early
at Waterview
Laundromat.

All through
November and
December, you
can do a big
wash at a low,
low price!



Do a 27 KG wash
from \$4 on
Mondays,
Tuesdays and
Wednesdays.

Get your wash
done at this low
pre-holiday price
and free up your
weekends!



Open 7 days, 6am - 10pm

On the beat

With the Rosebank/Waterview Neighbourhood Policing Team

Issue 19 - November 2013

COME ALONG AND HAVE A GREAT COMMUNITY DAY!

SIRENS & SOUNDS

SAFETY FESTIVAL
Sat 23rd Nov 2013. 11am-3pm
Eastdale Reserve. Avondale

Avondale Primary • Rosebank School • Waterview Primary • Avondale Intermediate
Auckland Council • ACC • Auckland Transport • CPNZ • Neighbourhood Support • Plunket

St John first to care
NEW ZEALAND FIRE SERVICE
NEW ZEALAND POLICE
PRESENTS
EMERGENCY SERVICES
DEMOS & DISPLAYS
MC MICHAEL ALOFA
LIVE MUSIC
DISCS BY DJ LENNY
FOOD STALLS

Oyster Design New Zealand
NPT
NEIGHBOURHOOD SUPPORT
dspprint
Whau Local Board

From 1 November 2013 child restraint laws are changing to improve safety.



As a driver you must make sure any child travelling in your vehicle is correctly secured.

What's changing?

THE LAW SAYS YOU MUST	UNTIL 30 OCTOBER 2013	FROM 1 NOVEMBER 2013
Correctly secure your child in an approved child restraint	Until their 5th birthday	Until their 7th birthday
THE LAW SAYS YOU MUST	UNTIL 30 OCTOBER 2013	FROM 1 NOVEMBER 2013
Correctly secure your child in an approved child restraint if one is available in the vehicle (and if not, in any child restraint or safety seat that is available)	From their 5th birthday until their 8th birthday	From their 7th birthday until their 8th birthday

These changes will help reduce preventable deaths and serious injuries to children travelling in vehicles.

Your child restraint must be fitted correctly. For expert advice contact a certified Child Restraint Technician via www.nzta.govt.nz/childrestraints

NEW ZEALAND TRANSPORT AGENCY

Safety Campaigns

New Zealand Government

AVONDALE WALKING GROUP: Just so you know, the weekly walking group will be leaving the Avondale Police Station at 6.30pm every Thursday now that daylight saving's kicked in. So come join the group, exercise for an hour, and enjoy some good and neighbourly company.



Keep an eye out on Facebook this month as we launch our NPT page to keep contact with the neighbourhood.

Primary School FUN RUN: On October 23rd, Year 4-6 pupils from the four local schools competed in the first NPT/Sport Waitakere Fun Run, held at Eastdale Reserve. It had been postponed from last month due to the weather, which unfortunately wasn't a lot better. The kids had a lot of fun, and did their schools and themselves proud. After the run, they were given a sausage and drink (cooked by our local Youth Action Team officers) and get involved with some of the other fun activities available for the day. Thanks to the schools, parents, and volunteers who helped make this day possible. Maybe we'll even do it again next year!



IMPORTANT CONTACTS

Emergencies - 111

Non-emergencies - (09) 571 2800

Crimestoppers - 0800 555 111

Rosebank/Waterview Neighbourhood Policing Team: (09) 820 5701 (NOT staffed 24/7)

Email: Rosebank.Waterview.NPT@police.govt.nz

Neighbourhood Safety Panels:

rosebanknsp@gmail.com

waterviewnsp@gmail.com



Our Branches:

Avondale, Manurewa, Papatoetoe, East Tamaki and Papakura

Call for appointment :

0800 268 954

-  **FREE INITIAL CONSULTATION**
-  **FREE BRACES CONSULTATION**
-  **FREE IMPLANTS CONSULTATION**
-  **EXTRACTIONS**
-  **FILLINGS**
-  **LASER DENTISTRY**
-  **CROWNS & BRIDGES**
-  **DENTURES**
-  **HYGENIST CLEANING**
-  **FREE ACC TREATMENT**
-  **FREE TREATMENT UNDER 18 YEAR OLD**
-  **FREE WINZ QUOTATION**



Southern Cross
Health Society

Easy-claim available for Southern Cross members



12 Months Interest Free* Finance

Manurewa now Open on SUNDAY : 9AM -5PM

Info@hillparkdental.co.nz

www.hillparkdental.co.nz

Hours: Monday to Saturday 8.30AM -5 PM

**Q card fees, lending criteria, terms and conditions apply.*

AVONDALE COMMUNITY GARDENERS



VORTEX WELLBEING

Christine Moginie is an artist, qualified kindergarten teacher, with a certificate in Rudolf Steiner Education & a Diploma in Applied Holistic Counselling. She also has certificates in Visual Arts, Fine Art, Film, Business, Fox Elms

Artistic Therapy course, Total Body Care & Biodynamic Agriculture. Christine combines 30 years of experience in person centred counselling skills, artwork, journalling, guided visualisation & gentle aromatherapy based massage, to facilitate our connection to the healing mysteries of Nature & Colour. Her skills include Batik, Shibori, fabric dyeing, screen printing, watercolour, pastels, crayon/pencil drawing, hand built pottery, glazing, sculpture, etching, lithographs, knitting, children's book illustration. Christine has held art exhibitions in Australia, Switzerland, England, France, & China. Come & join us for a Creative Art workshop, on Saturday 8 November 2014 11am-2pm at Rosebank Peninsula Hall ; "Art in Health & Biodynamic Gardening." Christine Moginie's ; Conversations in Colour, will show us simple, fun techniques to create our own images of the world of nature, that also strengthen our breathing, thinking, and creative processes and abilities at the same time.

No previous drawing ability required. Workshop entry \$5 with shared lunch.

Avondale Community Gardeners gratefully acknowledges the support of our Sponsor, Kete Ora Charitable Trust, who has made our "Therapeutic Gardens & Community," 2014 Series, possible.

Ph. (09) 828-5854

W : www.facebook.com/avondalecommunitygardeners

E : avondalecommunitygardener@gmail.com

Page 8 ♦ November, 2014

Western Veterinary



2021E Great North Road, Avondale

Phone AK 820 9991

Dr. Harcharan Singh

B.V.Sc. NZNVE. Ph.D. (Germany)

"Caring For Your Best Friend"

Cats

- Spay \$80.00
- Neuter \$50.00
- Vaccination Kittens Standard \$35.00
- Kitten Vaccination & Advantage Multi \$70.00
- Breeder Vaccination \$25.00
- Vaccination Cats Standard \$45.00
- Teeth Scale and Polish \$120.00
- X-Rays (Digital) \$85.00

Dogs

- Spay (All Breeds) \$185.00
- Neuter (All Breeds) \$120.00
- Vaccination Puppies Standard \$35.00
- Vaccination Dogs Standard \$45.00
- Breeder Vaccination \$25.00
- Teeth Scale and Polish \$145.00
- Full Kennel Vaccination \$65.00

All de-sexing procedures include antibiotics and pain relief
All major brands of vaccinations available

OPEN WEEKENDS

MONDAY-FRIDAY
SUNDAYS

SATURDAY

FOR 24 EMERGENCY CARE - PH: 820 9991