

The Spider's Web

Delivered free to over 5,200 homes in Avondale and Waterview



October 2014

AVONDALE No. 137

FOUR DAYS OF COMMUNITY EPIC



WHAU ARTS FESTIVAL

AVONDALE / OCTOBER 16 -19 / whauchepeople.com

Whau Local Board
Auckland Council



Auckland Council
Te Kaurihera o Tāmaki Makaurau

creative nz
COMMUNITIES



Avondale APPLIANCE CENTRE
1a Crayford Street-West, Avondale, Ph. (09) 828 2098
Email: macappcent@xtra.co.nz

Ultimate Safety Training

Wood Group PSN wishes to announce our Training Facility in Henderson Auckland is open.

First Aid
Fire Safety Training
Health and Safety
STCW 2010 and Marine
Well Control
Driving and Crane Machinery



Quality Assured Training ISO,NZQA, Opito Accredited

T: 0800 707 383
E: info@woodgroup-ust.com
W: woodgroup-ust.com

keeping people safe

Quote Spider20
& receive 20%
discount on any
course booked

Beckett Real Estate

Licensed Agent REAA 2008

Sell your property with me...

Glenys Macdonald

Ph. 021 629066 or 09 8289812
1954 Great North Road, Avondale

Avondale Plumbing Services Ltd



Jaik Stone

NZ Certifying Craftsman Plumber

M: 021 916089 P: 09 828 4505

E: avondaleplumbingnz@gmail.com

Avondale



Published by the Avondale Business Association (Bernie Thomsen)
Phone (09) 820 0648 Fax (09) 820 0649 PO Box 19 730 Avondale
Email: aba@avondale.net.nz Website: www.avondale.net.nz

Advertise here for as little as \$25 per month.

"Please note: Payment is required once final proof is accepted before printing."

DISCLAIMER: Every effort has been made to ensure the accuracy of information in this newsletter, but the editors and publishers accept no responsibility for any errors or omissions.

Whau Local Board Meetings

The following were amongst the items discussed at the June meeting of the Whau Local Board at New Lynn, 17 September 2014.

Deputations

Chinese New Year & Street Market Festival - Bob Cui

Bob Cui representing six community organisations was in attendance to seek support from the Whau Local Board for a local Chinese New Year and street market festival in New Lynn in late January 2015.

2. The community organisations seeking support are: The Chinese Association of West Auckland, Chinese Environment Protection Society, Hanhah Culture & Sport Centre, Colourful Arts and Culture Group, Happy House of New Lynn, Blockhouse Bay Chinese Association.

Board Chairman's report

1. I have attended many meetings and workshops during the past month starting with an Environmental Hui at the Fickling Centre in Mt Roskill. His Worship, the Mayor Len Brown launched this regional discussion on the environment. Water quality degradation in streams and rivers is still concerning. In Whau we have several environmental groups including the Ecomatters and Whau River Catchment Trusts.

Mayor's Proposal Long Term Plan 2015-2025

2. The Auckland Council Governing Body is discussing budget setting for the next ten years, guided by the Mayor's proposal to keep the rates increase to 2.5% until 2016. We have already seen media reports on how council spending needs to be trimmed.

3. Our most challenging issue is traffic congestion and on 29 October the Independent Advisory Group, formerly known as the Consensus Building Group will provide a business case to the Governing Body on extra funding streams to address transport issues. Options include rates rises and higher fuel taxes or road network charging.

New Lynn Traffic lights

4. A Western Leader front page article featuring the number of traffic lights in New Lynn drew a huge response from readers frustrated by the poor phasing of traffic lights in New Lynn. Earlier this year our board had already highlighted this issue with Auckland Transport and now they will be further investigating the issue as a matter of urgency.

Tiverton Park Design Open Day at Liberty Church Lansford Crescent

5. I attended the public open day for the Tiverton Park Concept Design held by parks staff. Community feedback was positive and people are excited about a new park in New Windsor which has less open space provision than other areas.

Local Board Plan Hearing

6. We had a full day hearing people speaking knowledgeably and passionately on their submissions to our Draft Local Board Plan. Many submitters complemented our proposed direction and some would like us to emphasise some themes more.

Board Members reports

Board Member Ami Chand has met with administration of Kelston Hub, and with members of the Waitakere Ethnic Board. The latter are still seeking further funding.

Board Member Ruby Manukia-Schaumkel presented her report.

Community Development

We have had several successful activities in the Whau: Rest Home Olympics, Mingling the Mixies, Launchpad Career Expo and the Avondale Youth Drop In (Ongoing) to name a few. The New Lynn Night Market celebrated its first anniversary at the New Lynn Community Centre and continues to be a site for the celebration of our cultural diversity and ethnic foods.

I have asked for a monthly report on the programmes and activities that have occurred in the Whau to see which communities are participating and to see what areas need policy development.

Facilities & Leases (Other members involved: Susan Zhu and Catherine Farmer)

Issues were raised at the community engagement consultations for the draft Whau Local Board Plan 2014 regarding the equity of costs and fees for facilities, access to facilities, centralised booking system and inadequacy of facility size.

I have asked the Facilities & Leases Team to provide a Monthly Report on the Usage of Facilities and a Quarterly Report on the Financials to address some of these issues.

Rosebank Business Association (RBA)

The RBA met with Glenn Richards from Global Security and Inspector Jacqui Whittaker, Inspector Area Commander Western Area Auckland City District at the RBA Board meeting to discuss in depth the general security risks and reports on the neighbourhood. The RBA met with Janet Schofield, council's manager of Business and Local Economic Development Planning to discuss the 2030 Rosebank Business Precinct Refresh Report. The RBA also met with Matthew Walker, council's manager of Financial Planning, Policy & Budgeting to discuss Auckland Council Targeted Rates. The Department of Corrections with the help of Friends of the Whau are planning to clear and clean up the coastal reserve outside the RBA offices and other areas within the Harbourside Business Park.

Housing (Other members involved: Susan Zhu)

We have the first housing portfolio meeting scheduled for September 17, 2014. We also have a scheduled informal working luncheon with the Chief Executive of HCNZ, Glen Sowry and his executive team on September 26th to discuss housing issues relevant to the Whau. We will be seeking a solution for emergency housing in the Whau.

Youth Connections (Working group members involved: Susan Zhu, and Seumanu Simon Matafai)

We met with council staff to begin our discussions about what we hope to achieve for Youth Connections by October 2015 – Ongoing discussion.

Sports and Recreation (Other members involved: Catherine Farmer)

I attended the Auckland Sports Coalition (ASC) Forum at the Raye Freedman Arts Centre to hear a discussion on sports and recreation in the Auckland region and how it impacts local communities. Sport and recreation is an ingrained part of the Kiwi psyche. At the grassroots level, participation in sport and recreation helps to bind our communities and our country. At the top level of sport, New Zealanders achieving on the world sporting stage lifts our national pride.

The sport and recreation sector is a vibrant and constantly changing area that holds immense potential for our communities. That is why it is vital we aim high and work to improve the way we support sports and recreation in our communities. Physical activity is an essential part of a healthy lifestyle. Sport and recreation must be accessible for all New Zealanders, including those with disabilities. I look forward to being a part of further discussions for sports and recreation in the Whau.

Auckland Transport report

Rosebank Road Refuge Consultation

Many local residents as well as the Rosebank Association raised concerns at the lack of pedestrian facilities in the vicinity of the Patiki Road/Rosebank Road roundabout on Rosebank Road. There are also concerns as to the unsafe behaviour of vehicles travelling northbound on Rosebank Road towards the roundabout where vehicles drive over the Rosebank Road flush median in order to bypass northbound vehicle queues. There have been 6 reported crashes in the past 5 years (2009-2013) out of which there have been 2 minor injury crashes at Rosebank Road/Patiki Road roundabout due to failing to give way at the intersection. There have been two crashes (1 injury, 1 non-injury) involving right turn movements from properties no. 624 and no.610 Rosebank Road/Patiki Roads and vehicles travelling on the flush median illegally to overtake queues.

Auckland Transport is proposing to install a 1.8 m wide raised refuge island within the flush median near no. 661 Rosebank Road to prevent motorists from using the flush for overtaking

the Chairman's Chat



Duncan Macdonald
JP
Chairman
Avondale Business
Association and
Avondale Community
Society Inc.



Local Dentists Tim Little and Victor Young have done a Big Spruce up of their shop frontages. New fascia signs have been installed. Shop fronts and under veranda ceiling painted.

Tim and Victor are the type of landlords wanted in Avondale as they seriously have pride in their appearance which is in stark contrast to the condition of the Historic Pages Building further down. I don't think they have even cleaned the shop front since the ABA painted the building over 10-years ago. We have repeatedly requested that they tidy up the frontage but the Body Corp just ignore us. They are just letting the township and community down. Avondale is copping a lot of criticism for its shabby appearance. Feel free to complain to those shops that are letting the rest of us down.



Please note that most of the buildings on Mainstreet are not owned by the shopkeeper. It is the landlords' responsibility to maintain the outside of the building, including the veranda. The shop keeper is responsible to keep its appearance clean and tidy.

Another prime example: Council forced the removal of an unsafe veranda at 1976-1978 Great North Road and now we have a veranda made of twigs and plastic bags in its place. Goodness knows how long it's going to take for this tardy landlord to sort his act out.

WHAU ARTS FESTIVAL

AVONDALE / OCTOBER 16 -19 / whauipeople.com

Whau Local Board meeting continued from Page 2...

as well as providing a pedestrian crossing facility outside the local shops as shown in the attached consultation plan. Please note that some footpath upgrade works will be required to be able to install a pram crossing at an appropriate grade and to ensure adequate drainage is maintained.

Kelston Community Hub

The Board approved that a funding agreement be negotiated with Kelston Community Hub Incorporated for nine months as a term grant for \$28,072 to deliver activities, initiatives and programmes from Kelston Community Hub at 68 St Leonards Road Kelston.

Whau Local Event Fund 2014/2015

The Board approved the following funding allocation:

Carols by Spiderlight \$6,000
Rhythm at Riversdale \$10,000
Disco for Youth with Disabilities \$5,000
Movies In Parks \$7,500
Heritage Festival \$10,000
Matariki \$5,000
Blockhouse Bay Santa Parade \$5,000
Whau Day Out \$50,000

CAPEX projects deferred

The following capital expenditure (CAPEX) projects are among those that have been deferred to future years:

Walkway linkage Trent Street to Heron Park
Development of Tiverton Park
Play Space at Canal Reserve
Play Space at Terry Street Blockhouse Bay Reserve
Recreation Centre (Whau)

Avondale College Community Facilities

The Avondale College Community Stadium is available for hire:

Monday - Friday term time 6:00 pm - 10:00 pm
Weekends/School Holidays All day
Bookings taken weekdays 10:00 am - 6:00 pm

Sports Facilities available are:

- Two full size Basketball courts (one has seating for up to 1,000 spectators) which can also cater for many other indoor sports e.g. Volleyball, Indoor Soccer
- Two Squash courts
- Tennis courts
- Softball diamond
- Artificial Hockey turf
- Artificial Cricket wicket
- Dance room

Avondale College Community Stadium is a partnership with Auckland City Council.

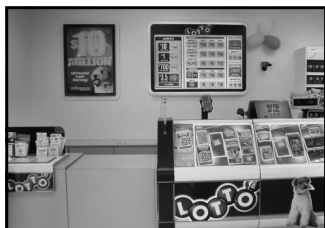
Please phone or E-mail the Stadium Manager for more information or a quote for your next event or training.

Telephone (09) 828 9885

E-Mail facilities@avcol.school.nz



Neelam Superette & Lotto



Open up to 8.30pm

Mon-Sun,
7-days a week

22 St Georges Rd,
Avondale

For all your grocery convenience and purchasing that lucky Lotto Ticket or Scratchy, the Manager, Michael Vaidya and his friendly staff are always ready with a smile to assist you.

Come on down and see us.



Funerals with a Tradition of Caring

Battersby is a family owned funeral service with three generations of history behind it over 80 years. Battersby is a well established and trusted name in funeral services. What Mark and Jennifer provide is more than just formality, it is part of the process of healing and celebrating life.

- * Available when you need us.
- * Able to assist with memorial stones, plaques
- * Chapel reception lounge and viewing hours.
- * One account to cover all funeral expenses.
- * Pre arranged and pre paid funerals.

Details: 1855 Great North Road, Avondale: Ph: 09-828-5113
 Email: battersbyfuneralservices@xtra.co.nz
 Website: www.battersbyfuneralservices.co.nz

AVONDALE DENTAL

Ph: 09 828 5786 Fax: 09 828 6586

1962a Great North Road, Avondale
 Email: avdental@xtra.co.nz
 Website: avondaledental.co.nz

Hours 8am – 5pm {Monday - Friday}

Dr Tim Little (B.D.S. Otago)



Tim has been highly involved in the Auckland Dental Association. He was president for 2 years before handing this position over and, still involves himself by continuing to support the new President and the executive. With Tim's experience he was also called on to help as a Chairman on the peer review committee. Tim is also a foundation member of the New Zealand Academy of Cosmetic Dentistry. He also has a keen interest to continue with further education on implant surgery. Tim's outside interests include spending time with his family and their three teenage children. He is a keen skier and in the summer months windsurfs, cycles and supports his kids with their sailing.

Dr Victor Young (B.D.S. Otago)



Victor graduated from the University of Otago in 1985 and has been a partner at Avondale Dental since 1990. He is an Auckland Dental Association Welfare Officer, helping his colleagues in times of need. Victor is also a Dental Mentor, helping other dentists with issues in the business and clinical aspects of dentistry. He is a Foundation Member of the New Zealand Academy of Cosmetic Dentistry. He enjoys delivering high quality dentistry with a caring, personal approach to all his patients. Victor loves to relax with a good game of tennis and is a keen skier and golfer. He is married to Liz and they have two teenage children.

Priya Associate Dentist Dr Priya Singh Reid (B.D.S. Otago)



After graduating from Otago University in 1997, Priya started her dental career in Hamilton before moving to Auckland in 2000. She has been in private practice in Auckland since. Priya is a member of the Auckland Dental Association and the Auckland Academy of Cosmetic Dentistry. She is passionate about providing high quality, long term, reliable and friendly care for her patients. Outside of work Priya loves spending time with her family. She also enjoys staying active and is a keen cook.

Hygienist Jelena Knezevic (BHSc Oral Health)



Jelena is a dual qualified Dental Hygienist and Therapist. She worked for 5 years as a registered nurse prior to moving to New Zealand in 2001. She has always enjoyed working in an environment where she can help people. She decided to explore a new avenue and qualified at AUT with a Bachelor Degree in Oral Health. Her ambition is to help people in achieving optimal oral health. Outside of work she loves to relax with a good book, and when the need arises to get a bit more active likes to get involved with a bit of DIY.

Avondale Dental is located in Mid-West Auckland and only 10minutes from the CBD. Our objective is to provide high quality dentistry with a personal and caring service. We provide a full range of dental care using the latest technology and dental materials. Our equipment and sterilization procedures are state of the art.

Our motto is that we are, "The Creators of Great Smiles and Healthy Mouths for Life"

Our services:

- * Latest Technology Using Latest Laser, Cad Cam Technology And Abrasion
- * Crowns And Veneers
- * Cosmetic Dentistry Restoration Of Broken Teeth And Mouths
- * Bridges
- * I V Sedation For Nervous Patients And Nitrous Oxide
- * Implants - Crowns
- * Preventative Dentistry
- * Laser Whitening
- * Jaw Problems
- * Oral Surgery
- * Partial And Full Dentures
- * Dental Hygiene
- * Take Home Bleaching

Contact us now for an appointment or further information.



Avondale Shoes

We specialises in
"Shoes" and
shoe repairs.

Visit us now! Open Mon to Sunday.

1892 Great
North Road,
Avondale.
Ph 828-8904



Milestones TROPHIES & ENGRAVING

Specialists in
Trophies Engraving Shields Laser Work
Badges Personalised Gifts Sublimation

1784 Great North Road Avondale
P: 5500230 M: 0226711656

DINNERTIME!

Are you hungry or
lonely or just like eating with others?

Well, Avondale Baptist Church invites you to join us for a delicious dinner at The Intersection Lounge - cnr Blockhouse Bay & New North Rds,

Avondale on the first Sunday of each month.

Bookings are essential so phone the Church Office on 828 0182 on the Thursday beforehand.

All welcome.

Kathryn & Paul Davie Your local area specialists

Kathryn & Paul Davie
021 521256
022 2448633
DDI 6268113
A/h 828 9265
Kdavia.blockhousebay@ljh.co.nz
pdavia.blockhousebay@ljh.co.nz

Austar Realty Ltd. Licensed Agent REAA 2008

LJ Hooker



AVONDALE ATHLETICS CLUB

Summer Season 2014-2015

Enquiries contact Judy Revell 021-738355

or visit our website or email: avondaleathletics@gmail.com

GO AVONDALE!



October Dates For Your Diary:

- **1st October** (4-6pm) Pre-Registration Night at the Club Shed (Eastdale Reserve)
- **4th October** (9am-1pm) Pre-Season Open Day – Mt Smart Stadium (7-14 year olds). \$5 Entry. See our website calendar for information about programmed events.
- **8th October** (4-6pm) Pre-Registration Night at the Club Shed (Eastdale Reserve)
- **11th October** (9am-1pm) Pre-Season Open Day – Mt Smart Stadium (7-14 year olds). \$5 Entry. See our website calendar for information about programmed events.
- **15th October** (from 5pm) First Club Night of the Season (woooohoooo!)
- **18th October** (9am-1pm) Pre-Season Open Day – Mt Smart Stadium (7-14 year olds). \$5 Entry. See our website calendar for information about programmed events.
- **27th October** – LABOUR DAY

Early November Dates For Your Diary:

- **2nd November** (10-4pm) Ron Keat Open Day - Massey Park, Papakura. Events for 2-14 year olds.
- **8th November** (9am-1pm) Compulsory Trans-Tasman Trial for Upper North Island - Mt Smart Stadium

Mr Kumar at Waterview Superette has a 20% fare discount waiting for you.*

***Pop around the corner to 1481 Great North Road,
Waterview and get yourself an AT HOP card loaded
with all these great benefits:***

- Save at least 20%*
- Just turn up, tag on and go!
- No queuing for paper tickets
- Register online to help protect your balance
- Avoid the need to carry cash
- Minimum top up just \$5



* At least 20% less than single trip adult cash fares (excludes NiteRider, Airbus Express and Waiheke ferry services).

Terms of use and registered prospectus for the AT HOP cards are available at AT.govt.nz/athop or at the Transport Information Centre, Britomart. The obligations of Auckland Transport under the AT HOP cards are unsecured.

For more information visit
AT.govt.nz/athop
or phone 09 366 4467  @AklTransport





Issue 29 - October 2014

DEMOCRACY - a freedom to cherish

Last month's opinion piece created a few ruffles, and a few discussions, but only a few, which kind of reinforced the problem that was written about - apathy.

The positive about living in a democratic society is that if you choose to share an opinion, you actually can do so, for the most part, without fear of reprisals. We are very lucky in NZ to have such freedoms - our media is full of horrific stories about the many countries where this is not the case. For those who did contact us personally, or message or comment on our Facebook page, we thank you for speaking up. It's good to hear what our neighbours think.

And so the 2014 General Election is done and dusted (and the official results should be out by the time you read this), but why did almost one million eligible people not cast a vote? There are probably myriad reasons why, but there is a significant apathetic element to it.

Our two neighbourhoods are going to be represented in Parliament for the next three years by Carmel Sepuloni. There was considerable interest in this seat, being a brand new electorate taking various parts of the three neighbouring electorates.

Surely a positive of Ms Sepuloni's success is a stronger voice for Pasifika in Parliament, whichever side of the benches they sit, and hopefully a united voice on some of the Pasifika-specific issues communities face.

For the Rosebank and Waterview neighbourhoods, Pasifika is the most represented ethnicity in the local population - so we look forward to her being a great representative for all her constituents, and for the NPT to be engaging with her about our work and that of the various community stakeholders within the neighbourhoods we all serve.

While we have had a rough September weather-wise, Daylight Saving has started again. A change in daylight hours often means a change in residents' behaviour patterns - spending more time outside after work, either eating, playing, or gardening. And with the warmer weather we start leaving windows and doors open to cool the house down.

Unfortunately, this also provides opportunity for thieves to enter houses and steal possessions, and the house owners are often completely unaware of what's happened until they come back inside.

So please - if you are going to be out the back of your property anytime, make sure the front of your property is secured first.

Good crime prevention begins with you.



Auckland's graffiti vandalism is down 13% against a year ago. And between March and Sept this year, 19,478 tags were wiped out. That's the nice news in the latest newsletter sent to those of us who voluntarily paint out tags in our neighbourhoods. If you'd like to help out, contact Civic Contractors on 377 7873.

<https://www.facebook.com/AvondaleNPT>



Window washers and homeless locals - an update on where we are at...

You may have noticed over the past few weeks that the intersection of Ash St and Rosebank Road has been pretty free from window-washers. Acting Sergeant BAILEY and the team have been taking a different approach to the problem after some legal issues around enforcing the by-law became apparent, and have done an awesome job. However, despite warnings and consultation, some of the washers have since been arrested and are now before the Courts for obstructing a public way and theft. The NPT are also working closely with Council for longer-term solutions, and with our Police colleagues at New Lynn, so that the problem doesn't just displace to Titirangi and Great North Roads intersection.

In a similar vein, NPT are working with Council to try and find better and longer-term solutions to the issue of homeless or rough-sleepers, but will still come down hard on them and some of our other local identities if they think it is acceptable to resort to abusive or threatening behaviour when asking for money and are refused - they will soon learn it is not.

IMPORTANT CONTACTS

Emergencies - 111

Non-emergencies - (09) 571 2800

Crimestoppers - 0800 555 111

Rosebank/Waterview Neighbourhood Policing Team: (09) 820 5701 (NOT staffed 24/7)

Email: Rosebank.Waterview.NPT@police.govt.nz

Neighbourhood Safety Panels:

info@nsp.co.nz

www.nsp.co.nz



Call for proposals – Whau Local Board area community arts brokering services

Proposals are invited for the provision of brokering and coordination services for the generation and delivery of arts and culture activities in the Whau Local Board area.

The Whau Community Arts Broker (WCAB) is a new community service supported by the Whau Local Board that will tap into the existing creative community in the Whau area to provide a range of temporary arts activities and activations.

A budget of \$30,000 has been allocated to fund the contracted hours of the WCAB from October 2014 to June 2015. A further project fund of \$50,000 has been allocated for the support and delivery of arts activities and activations.

Proposals are due on or before 15 October 2014 and require a detailed outline of the potential supplier's specific approach and methodology to providing the services of the WCAB. Proposals will demonstrate the ability to develop a strong network of relationships with creative communities in the Whau Local Board area and the ability to maintain working relationships with Auckland Council staff.

The programme of work developed by the WCAB must encompass:

- delivery across the Whau Local Board area
- engage with and reflect the diverse population of the area;
- activate public spaces, streets, parks, town centres, and empty shops;
- demonstrate partnership with other local arts or community organisations;

- involve local schools; and

- include a diverse range of art forms.

Proposals will be assessed using the following criteria:

- Proven track record
- Strategic approach
- Detailed methodology
- Pricing structure

Proposals must be received by 5pm, Wednesday 15 October 2014 via email to rebecca.kunin@aucklandcouncil.govt.nz.

For any enquiries please call Rebecca Kunin, Auckland Council Arts Advisor North/West, on 021-815-632.

AVONDALE COMMUNITY GARDENERS



Herbal First Aid

The health of the growing environment influences any medicine that can be made from it.

The daily rhythm of nature shows us how to care for a pattern of life, that sustains all in the web of life.

Our Herbalist, Michelle deLacy will be teaching us how to harvest, dry, & store herbs, & will profile 6 key herbs. Each individual plant has a specific therapeutic action & taste association, & herbs in particular, are best used as a nutritive & as a tonic. Special brews & blends will have a specific purpose e.g. to cure insomnia.

Michelle deLacy will also be showing us the process for pruning, harvesting, drying, & storing pain herbs, & how to use them in the relief of pain e.g. balms, creams, poultices, & compresses.

Herbs are clearly seen to enhance our mental, emotional, spiritual, & physiological functioning. Join our group workshop as we learn to create ; "The Family's Herbal 1st Aid Kit," with Michelle deLacy, at our workshop on Saturday, 11 October 2014 : 11am-2pm at the Rosebank Peninsula Hall, 212 Rosebank Road, Avondale.

Workshop entry is \$5 & please bring a plate for our shared lunch. Register on avondalecommunitygardener@gmail.com or by phoning Maui, on 820-4577



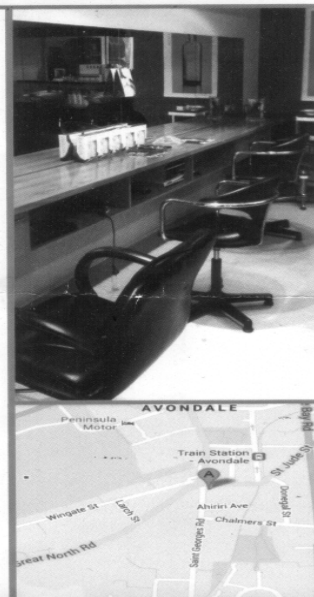
• *Specialising in colouring and cutting with a senior stylist who personally creates your style from beginning to end.*

• *As a Wella Professional Salon, I am a NZQA qualified hairdresser who is dedicated to the industry, training and keeping up with what's new and happening.*

• *My aim is to create a relaxed, friendly environment giving you an enjoyable experience.*

• *You will be treated as an individual when you arrive at Felice Hair Design and will leave as part of the family.*

I look forward to meeting you.



Call me now for your appointment

Phone: 828 6353
6 St Georges Road, Avondale





September school holidays: Creation Station!

27 September - 12 October

Come join us, pick up a full holiday programme from the library. Here are a couple of fun-filled learning activities:

Invent an app!

Tuesday 7 October, 1pm - 4pm

Learn to use MIT App Inventor to make your own Android app! Use one of our computers or bring your own laptop (PC required for creating the app). An Android device for testing your app is recommended but not essential. To book your place please phone 09 374 1310 or email Hamish Lindop. Recommended for kids aged 11+.



Recycled robots

Wednesday 8 October, 2pm - 4pm

Make your own robot toy out of recycled things like cans, bottles, and whatever else you've got! Bring your own recycled objects, we'll provide the glue guns. Recommended for kids aged 8+.

Wanted: Knights and knightesses (to rescue a princess)

Thursday 9 October, 3pm - 4pm

An hour packed full of fun drama games and activities that will twist a boring fairy tale into something wacky and spectacular! This is your chance to be a princess, a knight or a fire-breathing dragon – maybe even all at once! Great for kids aged 8+ who love acting the fool.

Diwali 2014 Celebrations

12 - 26 October

Celebrate Diwali the Indian Festival of Lights.

Diwali Big Read

Tuesday 14 October, 10.30am - 11am

Join us for a reading of Rangoli by Anuradha Ananth. All welcome. We will be doing a rangoli activity at the end of the session.

Diwali dress-up storytime: music, dance and stories

Wednesday 15 October, 10.30am - 11.30am

Bilingual storytime with music and dance (garba). Come dressed up Indian style if you wish. Learn how to wear a sari.

Make a Diwali festival of lights card

Thursday 16 October, 3.30pm - 5pm

Using traditional wood blocks to design your own card for friends and family. Diwali is a celebration of life and



enjoyment, which your card will reflect. Materials provided.

Rangmanch - an Indian theatre group performance

Saturday 18 October, 11am - 11.30am

A bicultural storytime presented by Rangmanch. Music, dance and a demonstration of how to wrap a sari Bengali style. All welcome. Rangmanch is a prominent Indian theatre group.

Henna painting with Jina!

Monday 20 October, 3.30pm - 5pm

Jina Solanki will demonstrate henna designs and body art.

3D Diwali printing workshop: Learn to make some unique objects

Wednesday 22 October and Thursday 23 October, 3pm - 5pm

Learn to design Indian objects and print them in 3D. This workshop runs for two consecutive afternoons.

Chai and chat! Henna painting and saree draping

Friday 24 October, 3pm - 4pm

Share your stories, have a cup of Masala chai and join the chatter around henna painting and sari draping. Learn interesting facts on the uses of sarees.

A taste of Diwali with Ella Kumar Bollywood style!

Saturday 25 October, 12.30pm - 1.30pm

Ella Kumar will highlight a variety of Indian dances, cultural information and will teach sari wrapping.

Whau Arts Festival at Avondale

16 - 19 October

Avondale Library is taking part in this festival by hosting a series of events

Photographic works by Max White

16 - 19 October

Enjoy an exhibition of photography by local artist Max White, who is a keen observer of the Avondale area.

Writing workshop with Amanda Eason

17 October, 10am - 11.30am

Celebrate the Whau Arts Festival by doing some writing yourself. Local poet Amanda Eason will guide participants through the writing process. Everyone will have a new piece by the end of the session and they'll be an opportunity to read aloud! Refreshments will be available. To book your place please phone 09 374 1310

A Tree Celebration

Saturday 18 October, 1pm - 2pm

Join us for poetry readings by well-known poets and a tree celebration ceremony performed by Warwick Broadhead

Art display : Martin Horspool will display his recycled assemblage robots during this month.

See you at the Library! Check our new facebook page www.facebook.com/avondalelib

Avondale Library

93 Rosebank Road, Avondale 1026

Ph: 374 1310

www.aucklandlibraries.govt.nz

Twitter: Auckland_Libs

marketinsight

Avondale

Median Sale Price – August 2014

\$561,500

+ 12.3% Median Sale Price
Compared to July 2014

18 Sales

in August 2014, compared to 15 sales prior month July 2014

\$750,000

Top sale in August 2014 (Eastdale Road)

\$339,000

Lowest sale in August 2014 (Septre Place)

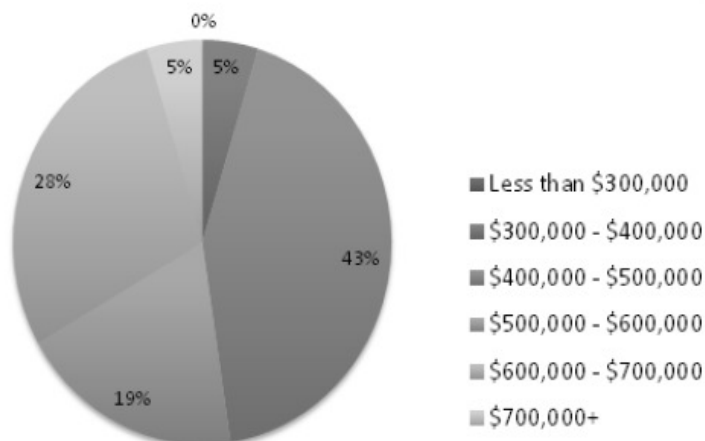
Avondale: 294 sales - Average sale price \$547,583
12 months to August 2014

Avondale: 319 sales - Average price \$515,908
12 months to August 2013

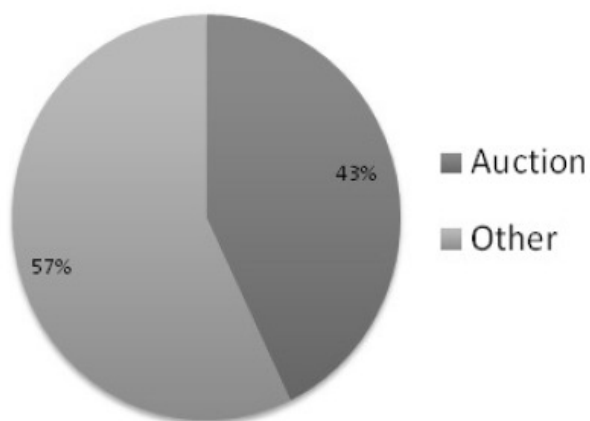
6%+

Increase Average sale price year on year

Sale by Sale Price



Sale by Method



Has this Market Insight report been of interest to you? If so, and you would like to receive a monthly copy, please email me a request.

Violet + Gloria Ellis
B: 09 815 2875
M: 021 043 9833
E: gloria.ellis@bayleys.co.nz



www.bayleys.co.nz

www.violetplusgloria.com

BAYLEYS

Masport

100 YEARS
in the making
EST. 1910



BONUS DRAW

Our store will be giving
away a Maestro BBQ
worth RRP \$749!

Terms & Conditions apply

THE BIG MASPORT TRADE IN - TRADE UP

\$50

Trade Up to a selected
Masport lawnmower
and receive a minimum
\$50 (incl. GST) Trade In

Excludes the purchase of new lawnmowers powered
by Briggs & Stratton 450 Series engines. For Terms &
Conditions visit www.masport.co.nz.



AVAILABLE FROM:

Avondale Mowers & Chainsaws

2 St Georges Road

Avondale

Ph: 09 828 9438



Avondale
Mowers & Chainsaws

Anne Maree Gardens

- Experienced Registered Nurses 24 / 7
- Regular visits from Doctor and 24 hour access for medical advice
- Podiatrist to offer advice and treatment
- Physiotherapy to assist with mobility and regular exercises

REST HOME, HOSPITAL CARE, RESPITE & DAY CARE

- Day Care for clients when their loved ones are away at work during the day. We provide a safe and friendly environment offering families peace of mind.
- Respite when families need to be away from home, need a break or are away on holiday. We offer an environment of stability for clients.
- Financial support is available through MOH by way of carer support, speak to the Needs Assessment team at your local DHB or speak to your GP for a referral.
- We provide a period of respite to clients who live in their own homes but need further recuperation post surgery or post hospitalisation. This can be arranged through POAC (Primary Options for Acute Care).
- This service is completely flexible, when you need it, for any length of time.
- Trained Diversional Therapist keeps the residents mentally stimulated with one on one time. We have lots of different group activities, games, outings & entertainment.

PHONE: RESINA RAKAI, (09) 828 3741 / 021 835 743,
24 CORONET PLACE, AVONDALE



SIRENS & SOUNDS

SAFETY FESTIVAL

Sat 22nd Nov 2014. 11am-3pm
Eastdale Reserve. Avondale

**FAMILY FUN
FREE EVENT
DAY OUT**

St John first to care
New Zealand FIRE SERVICE
New Zealand POLICE
Rosebank
dspprint
Whau Local Board




YOUTHTOWN & AYPN PRESENTS

THE ANNUAL VEI VEA MEMORIAL EVENT



3 vs 3 BBALL COMP
FUN MULTI-SPORTS
FRESH MOVEMENT DANCE CREW
DEDICATION MURAL
THE CREATIVE SOULS PROJECTS BAND
FREE FOOD & SPOT PRIZES

3n3 BBALL REGISTRATION
CONTACT VICTOR KALOLO
027 836 4565 or victor@youthtown.org.nz

FRI 17TH OCT 2014, 4PM - 7PM
RIVERSDALE PARK, AVONDALE